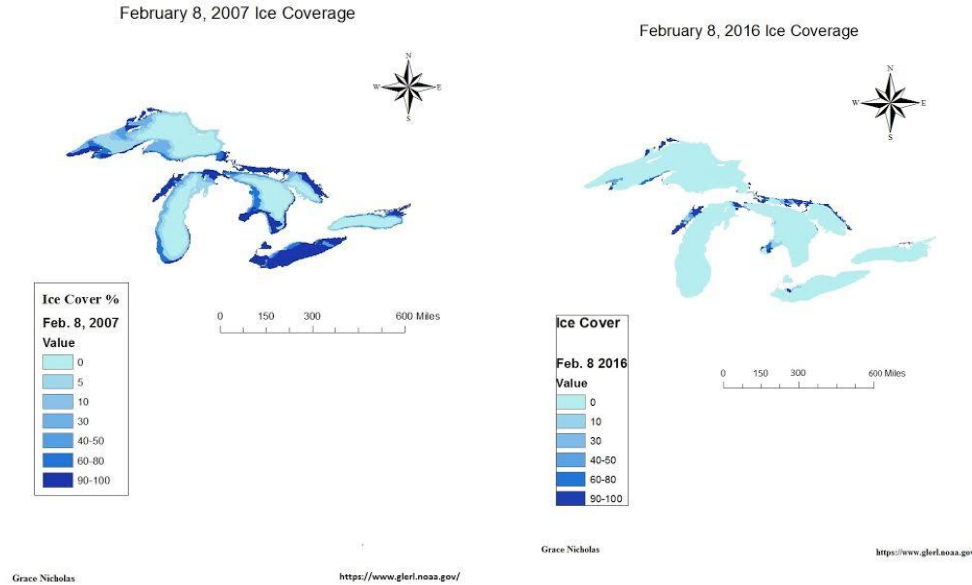


Introduction

My purpose in using GIS is to map the effects of ice cover and decreasing lake water levels, specifically in the Great Lakes Region, over the past ten years. I chose a time frame of 10 years. It's a large enough time span to record a lot of data (which leads to better accuracies) and it's a small enough time span for most people to think back and ruminate on what the weather was like then (so they have a comparison of facts and memory).



Methods

- Data is obtained through the NASA Landsat ETM+7* satellite.
- Datasets came from the Great Lakes Environmental Research Lab
- ArcMap was used to convert the data from vector to raster

Conclusion

Higher temperatures over the past ten years have led to less ice coverage on the Great Lakes. This leads to many dangerous consequences, like the growth of algae blooms and dead zones, and the decline in the fishing industry.