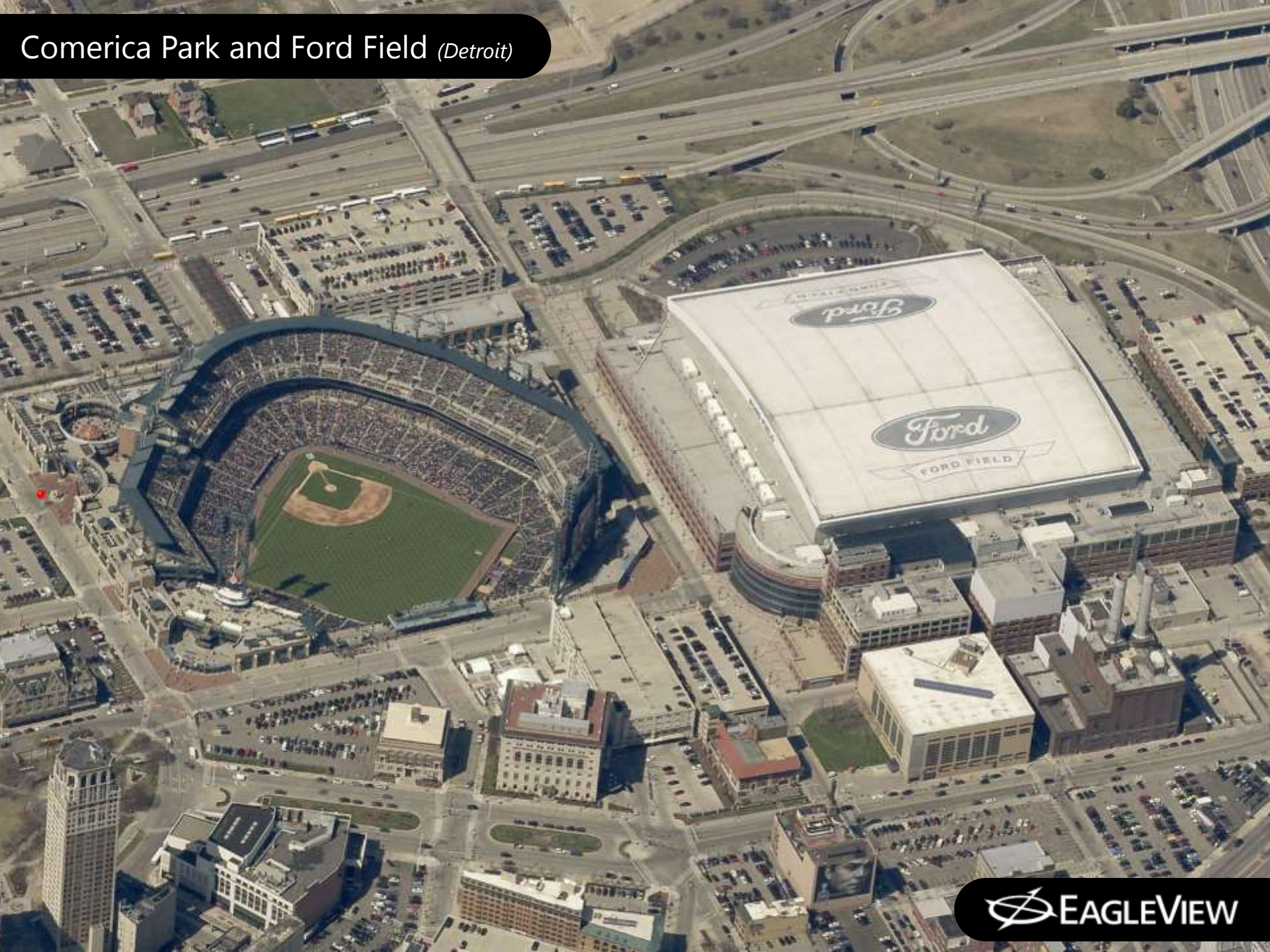




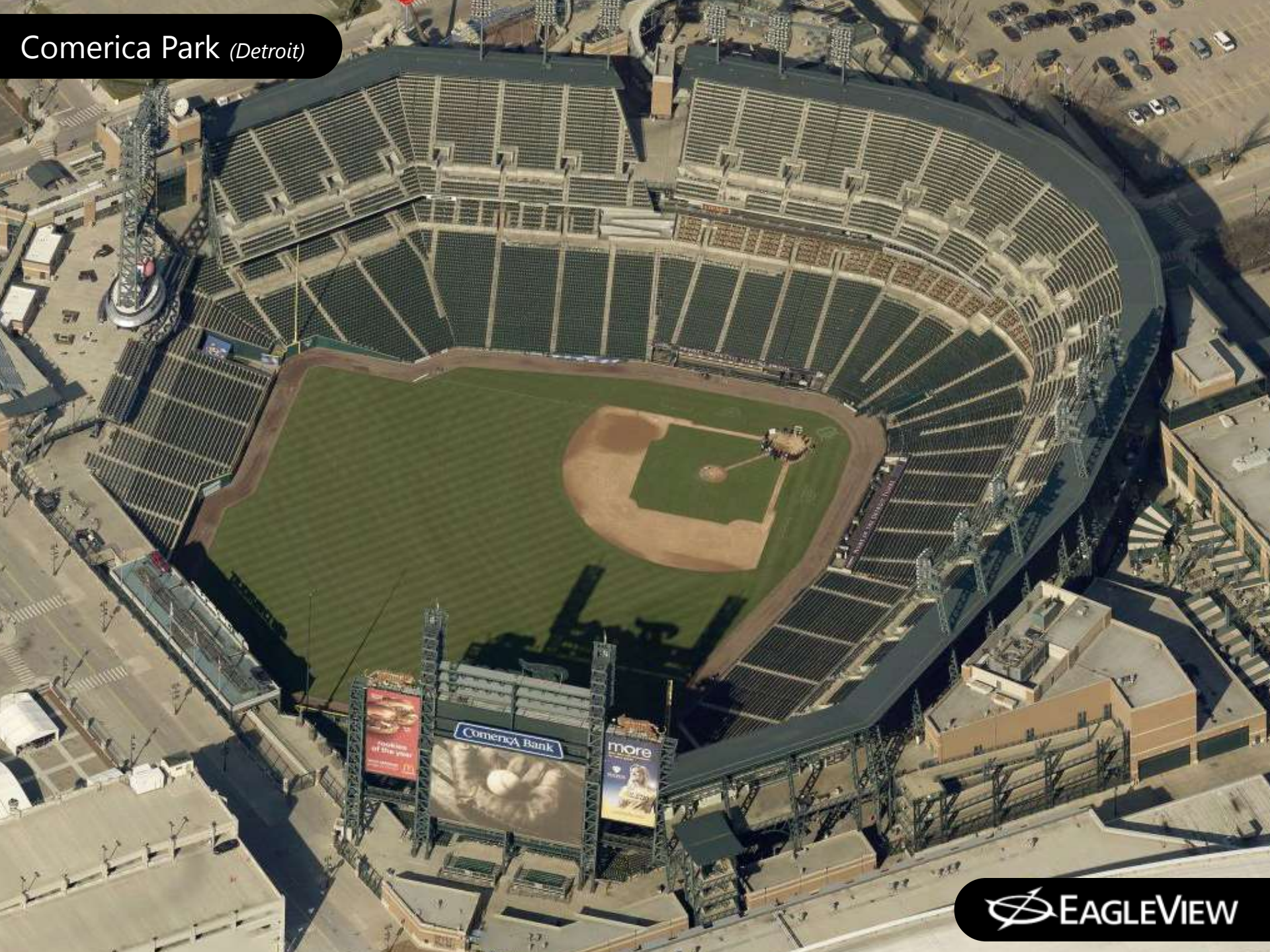
Integrating High Resolution Oblique Imagery Into Your GIS

Jeffrey S. Nemecek, GISP
Regional Technical Manager

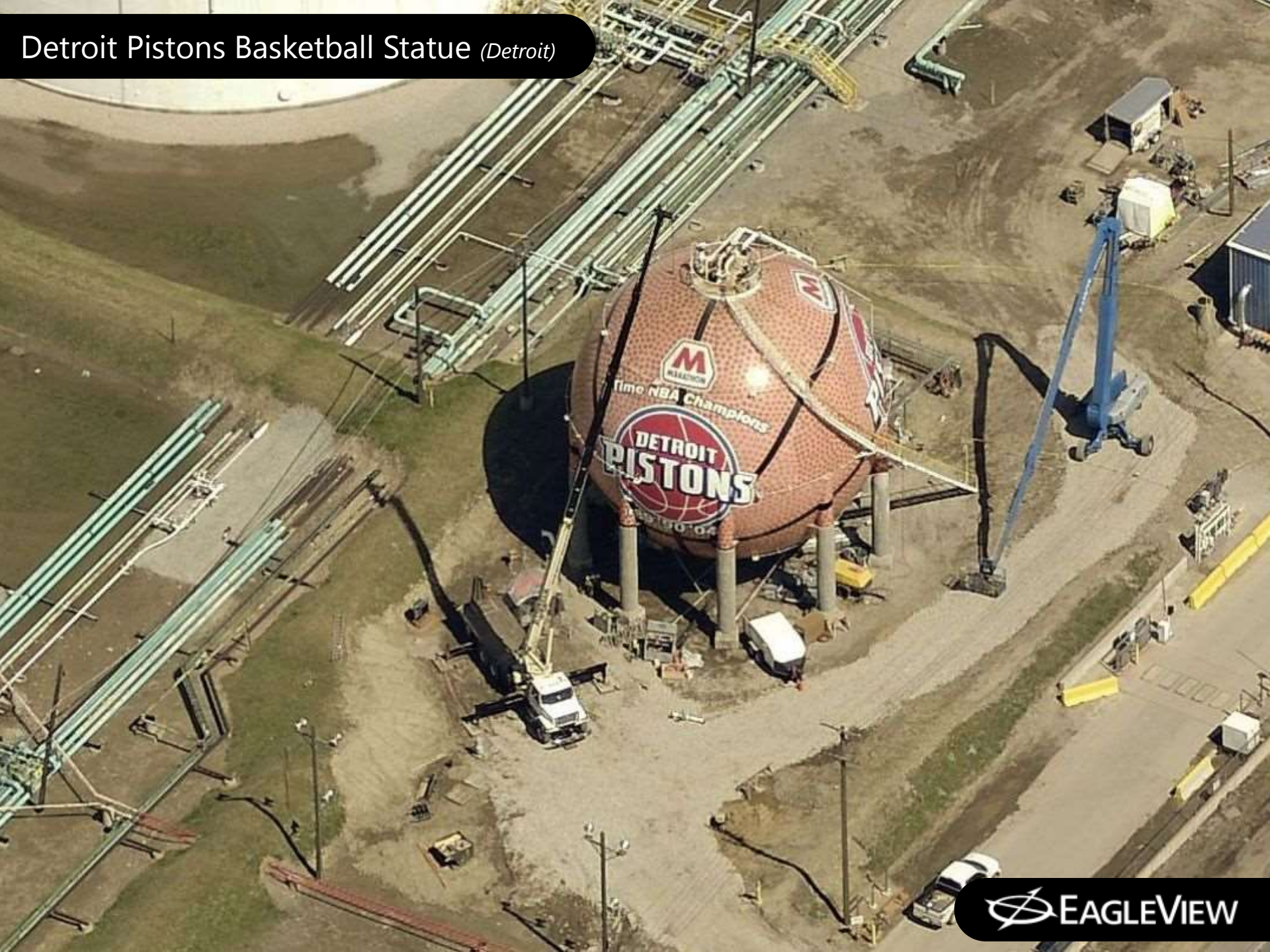
Comerica Park and Ford Field (Detroit)



Comerica Park (Detroit)



Detroit Pistons Basketball Statue (Detroit)



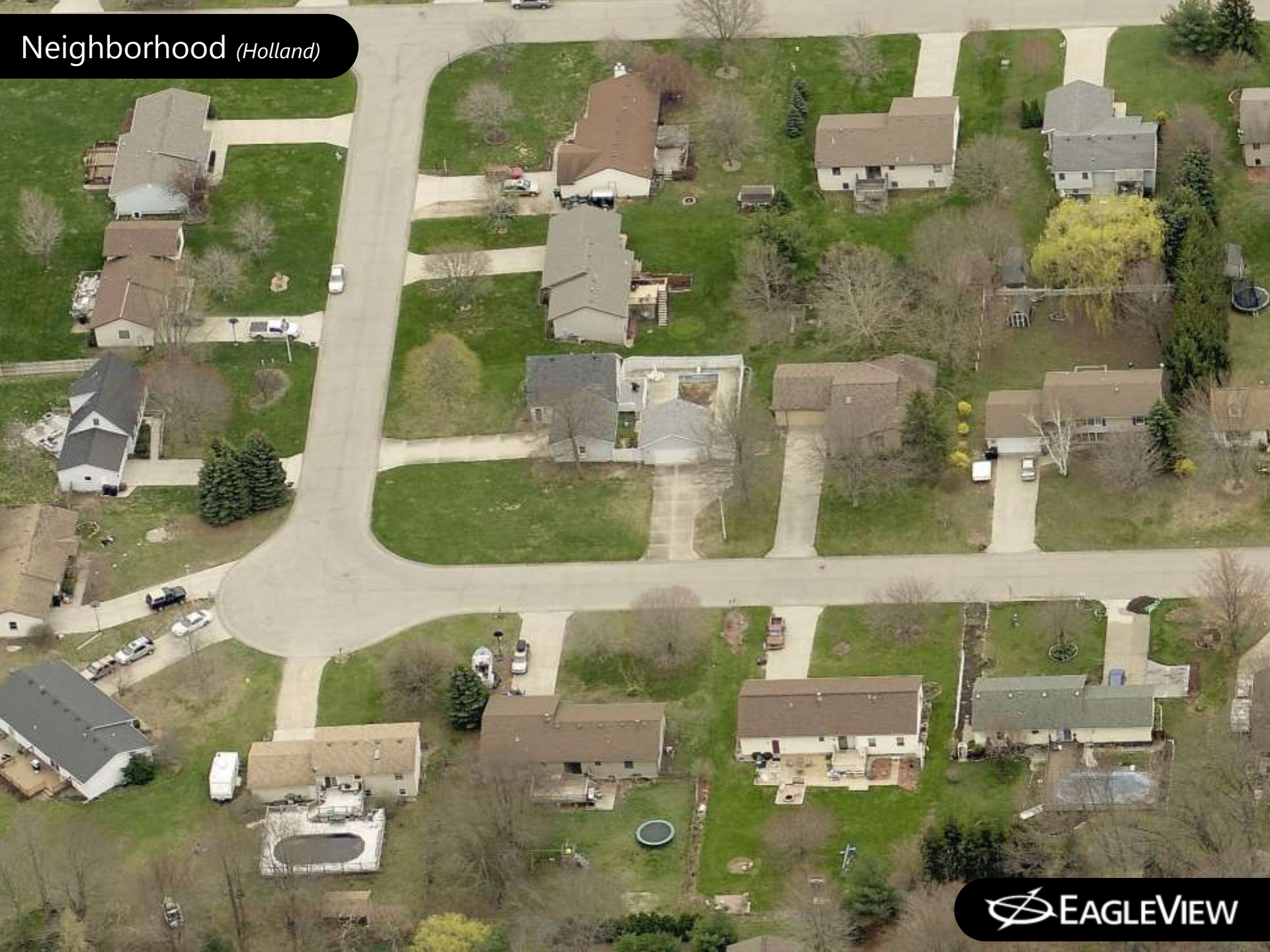
General Motors *(Detroit)*



Lakefront Homes (Holland)



Neighborhood *(Holland)*



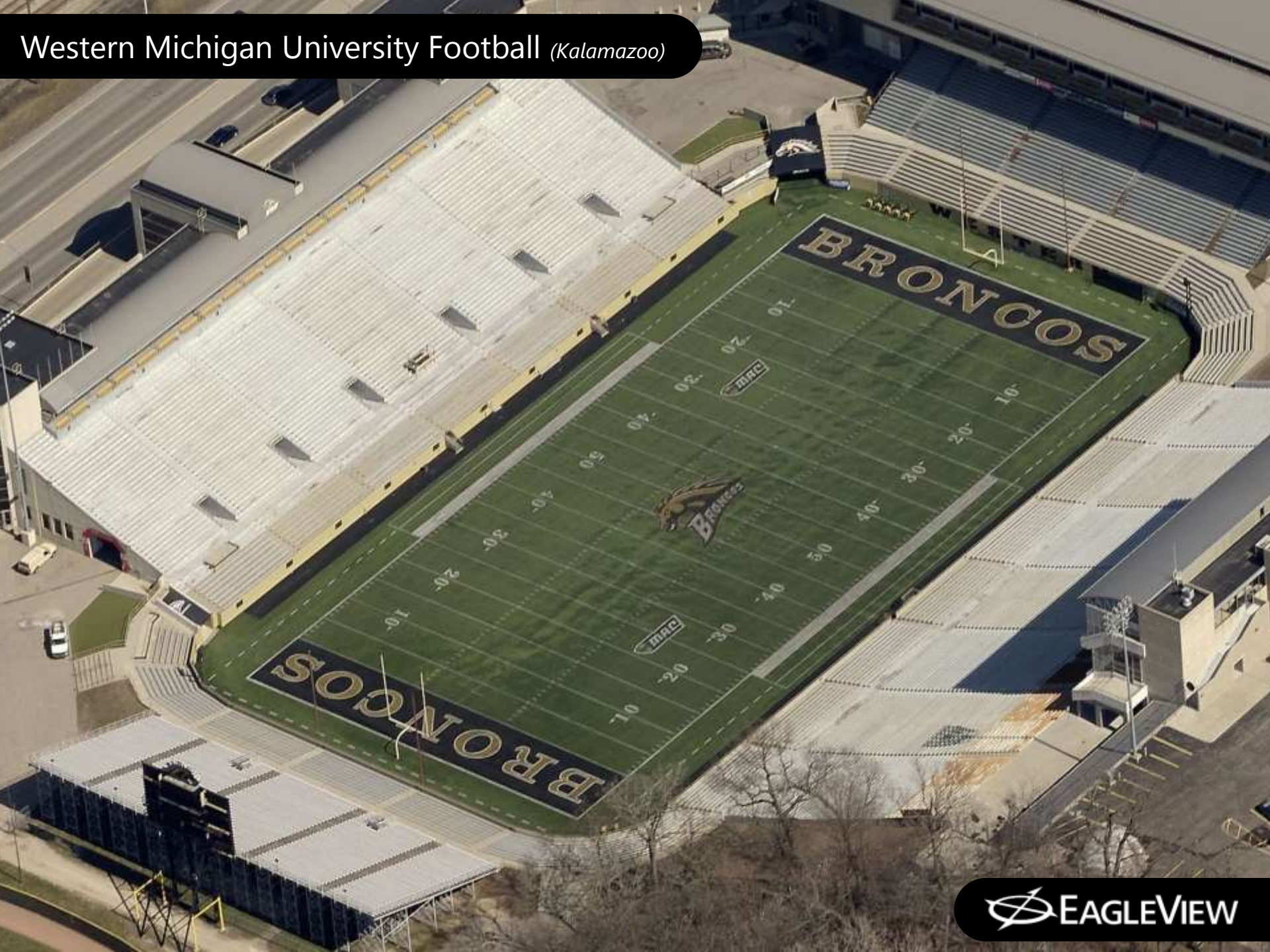
Lakefront Homes *(Holland)*



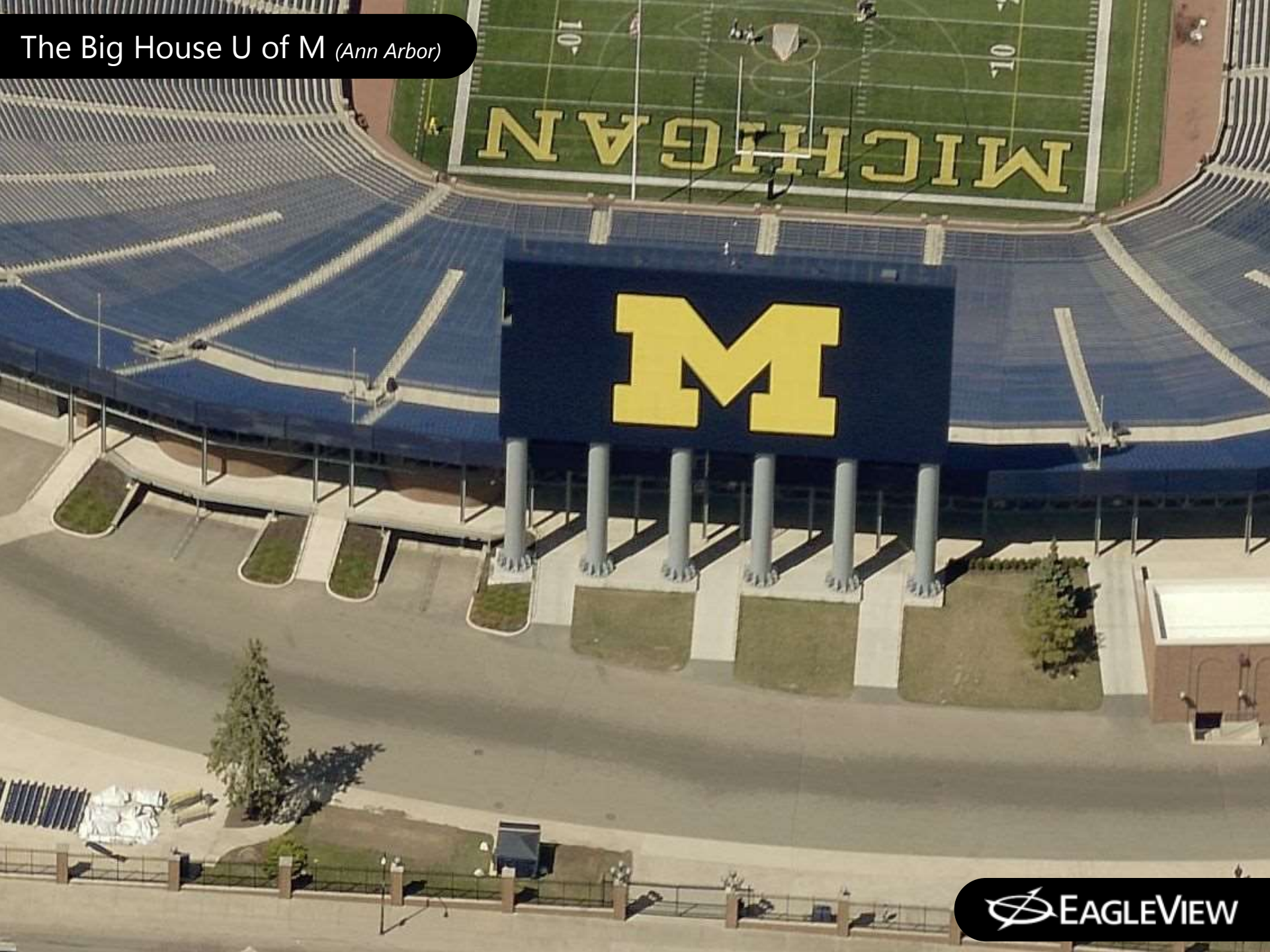
Western Michigan University *(Kalamazoo)*



Western Michigan University Football (Kalamazoo)



The Big House U of M *(Ann Arbor)*



DeVoss Estate 2006 *(Grand Rapids)*



DeVoss Estate 2008 *(Grand Rapids)*

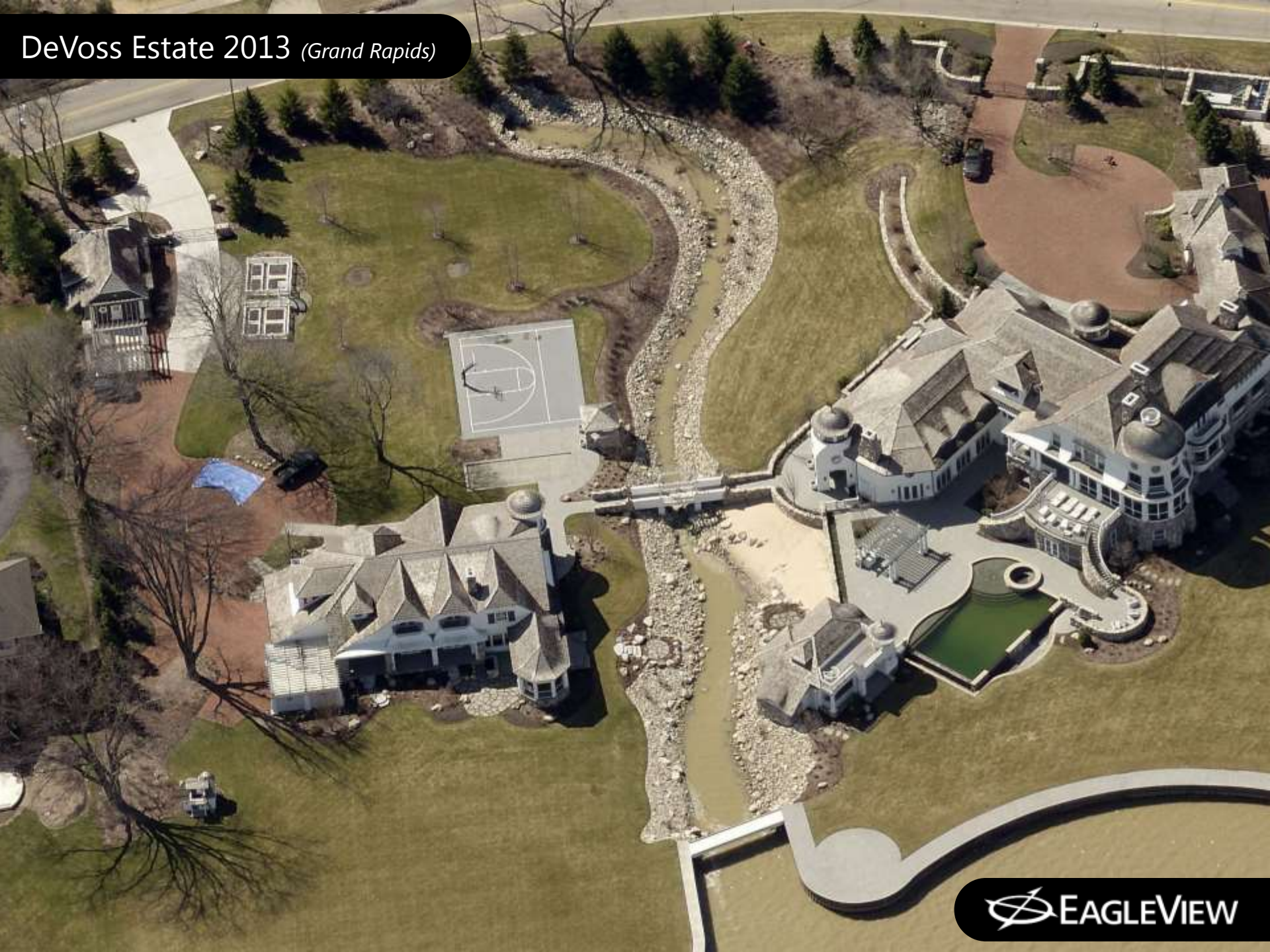




DeVoss Estate 2011 *(Grand Rapids)*



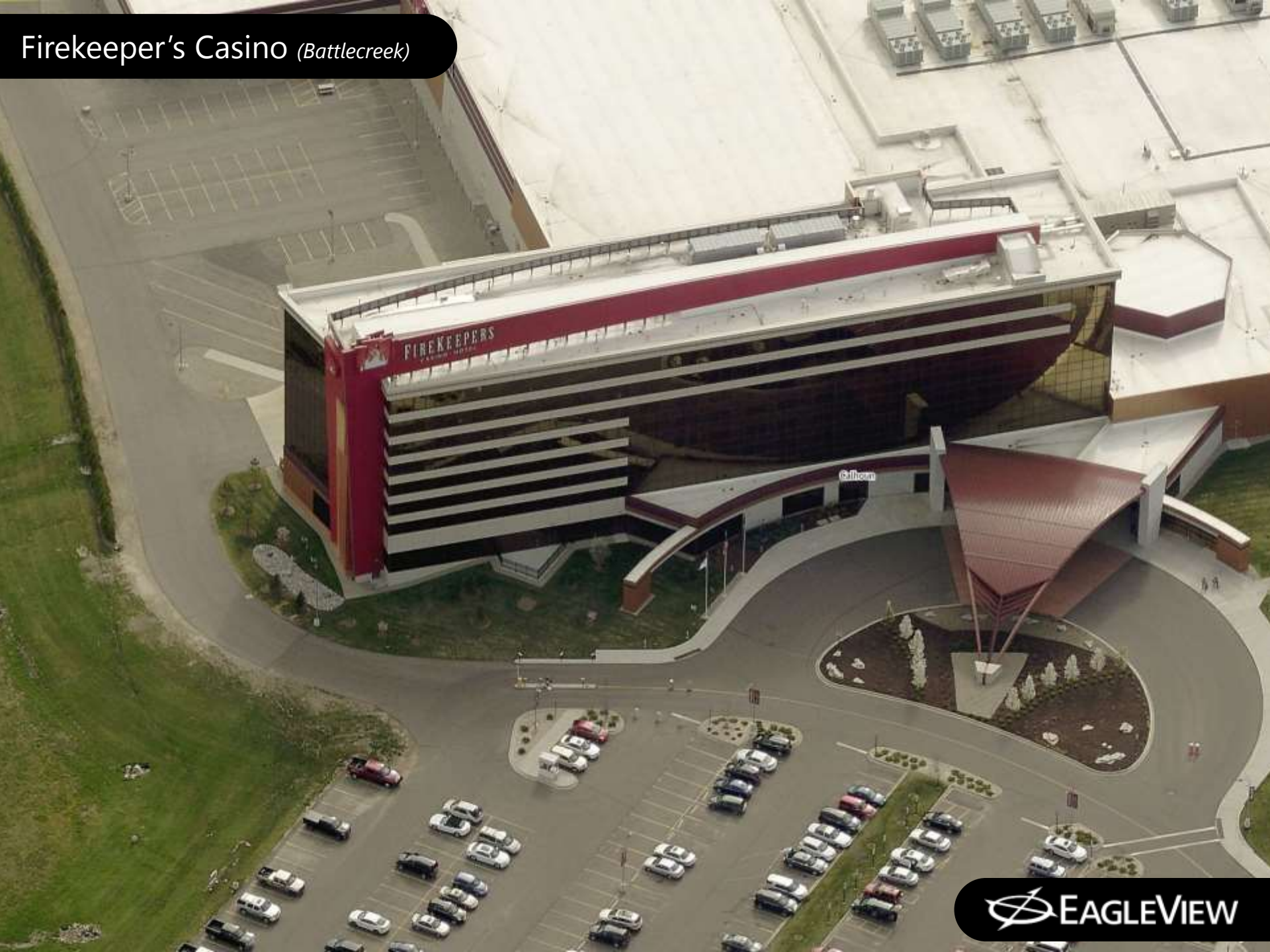
DeVoss Estate 2013 *(Grand Rapids)*



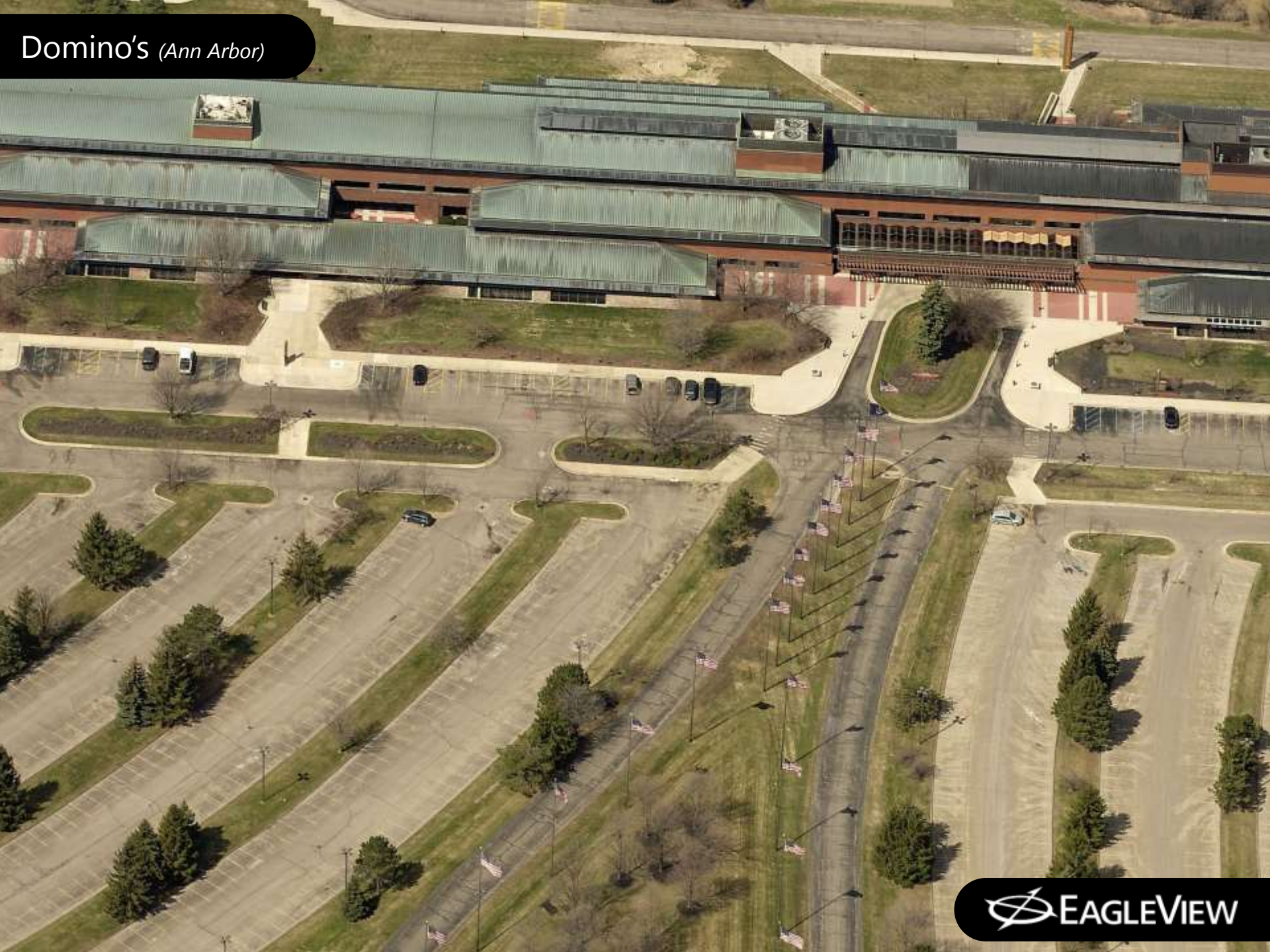
DeVoss Estate 2014 *(Grand Rapids)*



Firekeeper's Casino (Battlecreek)



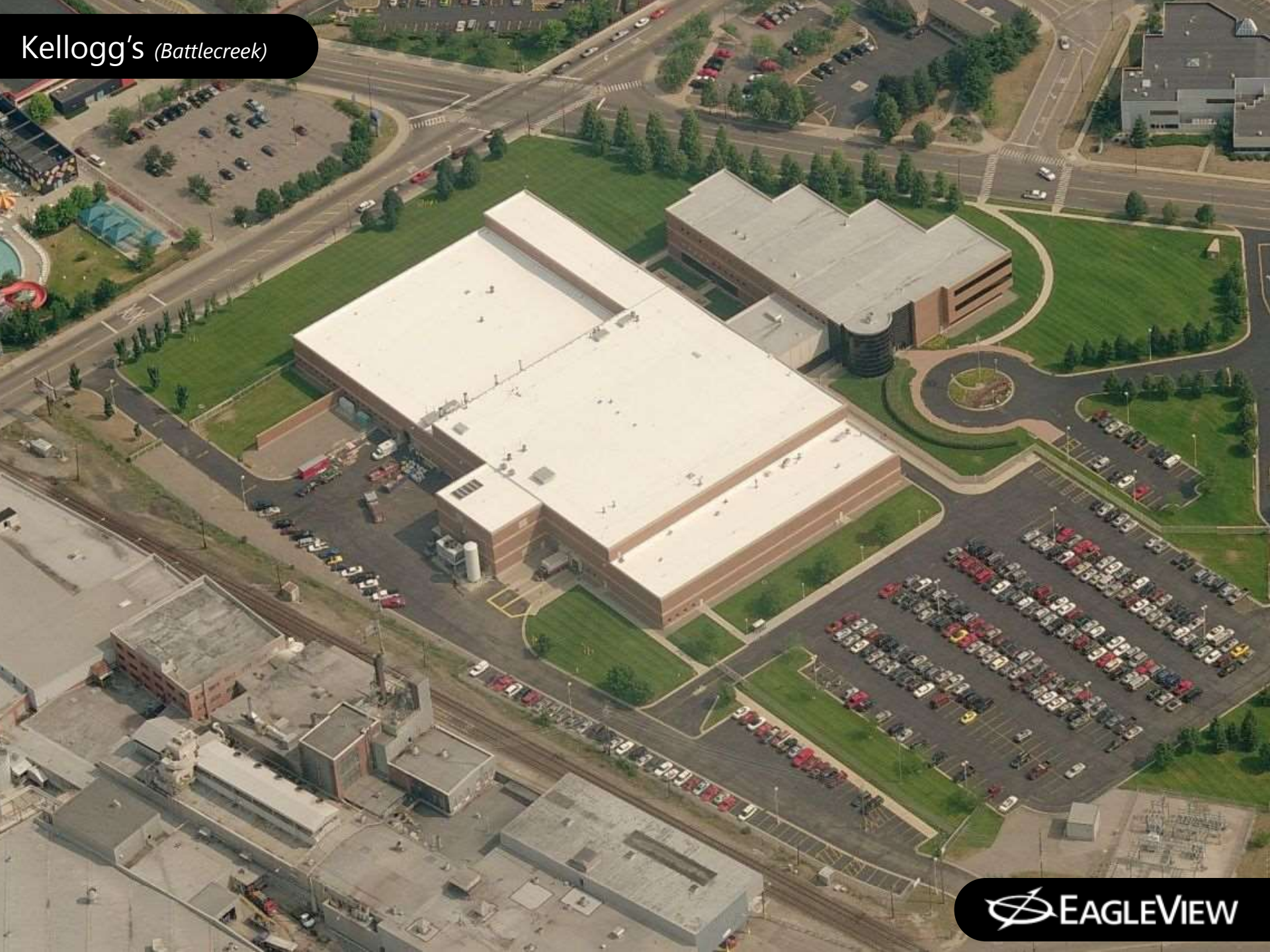
Domino's (Ann Arbor)



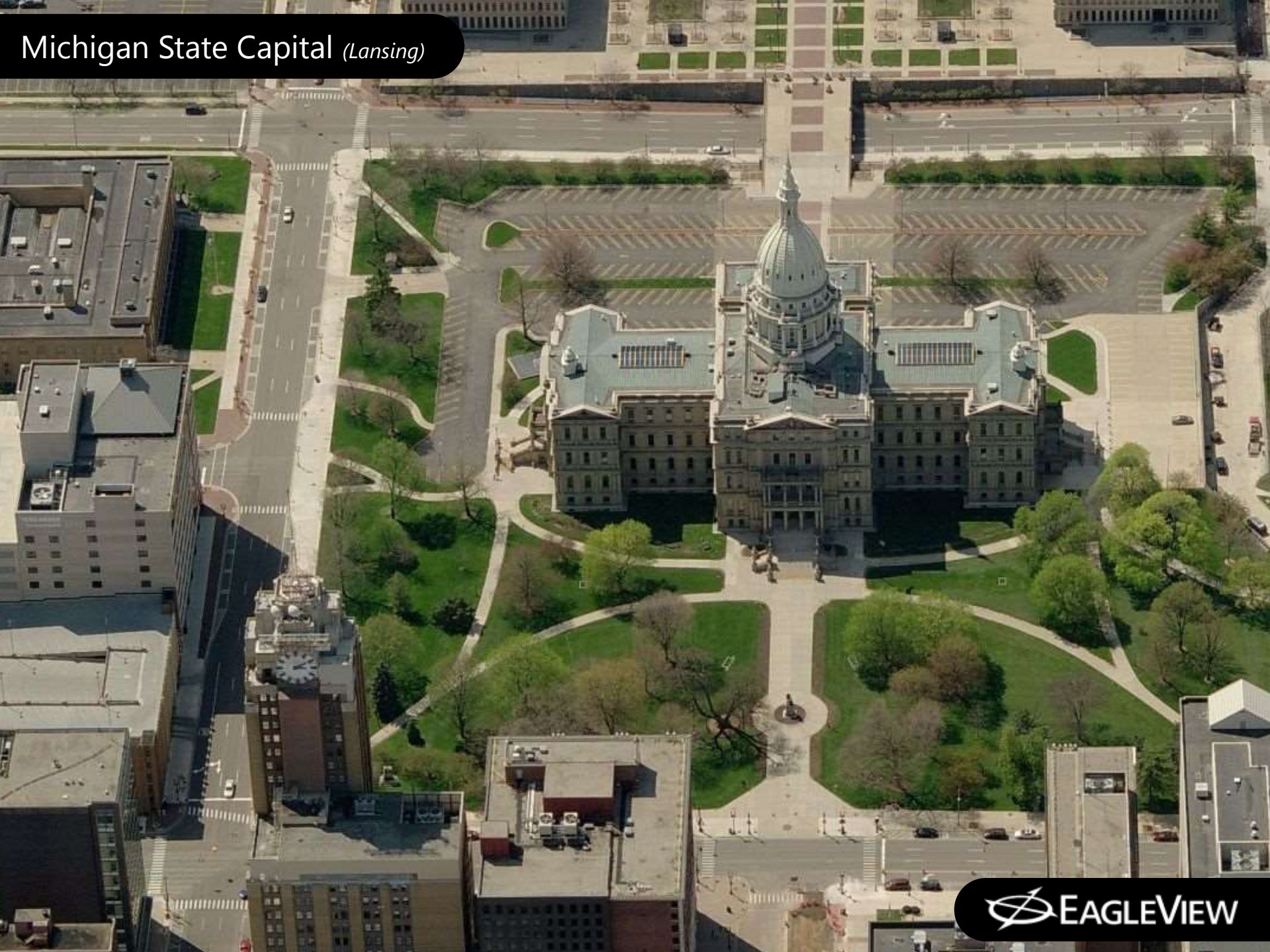
Cabela's *(Dundee)*



Kellogg's (Battlecreek)



Michigan State Capital *(Lansing)*



EagleView Executive Summary

Company Highlights

- Invented the “intelligent” aerial oblique image
 - *Pictometry imagery*
- Only **USGS-certified** oblique capture system
- 55 patents spanning camera system technology, image capture processes and on-image measurements
- Best image quality in the industry

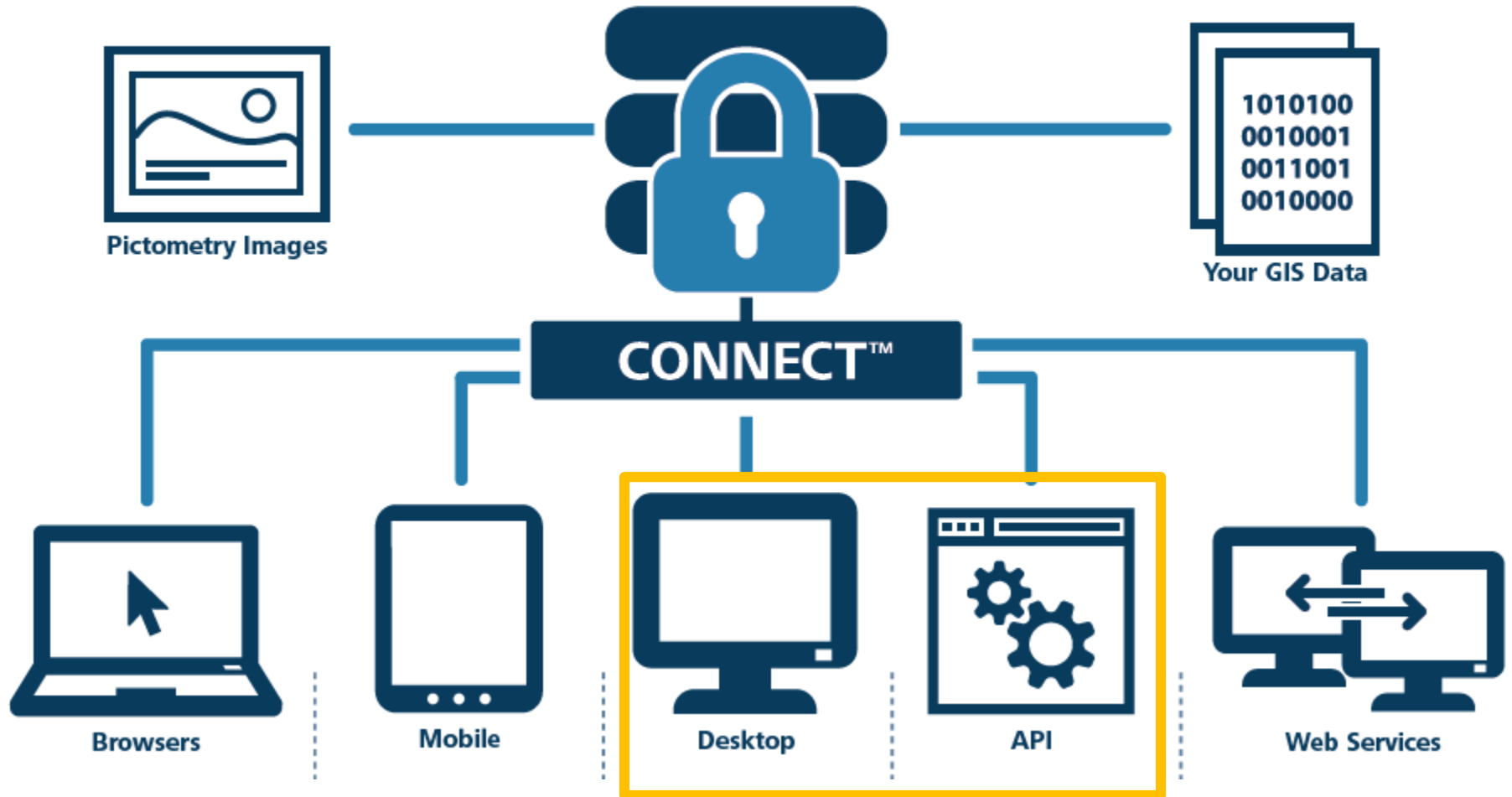
Technical Resources

- 116 aircraft in our fleet (and growing)
- Custom designed hardware and software
- Accurate measurements, including height
- Obliques and orthos in one, low altitude flight
- Final delivery within approximately 60 days



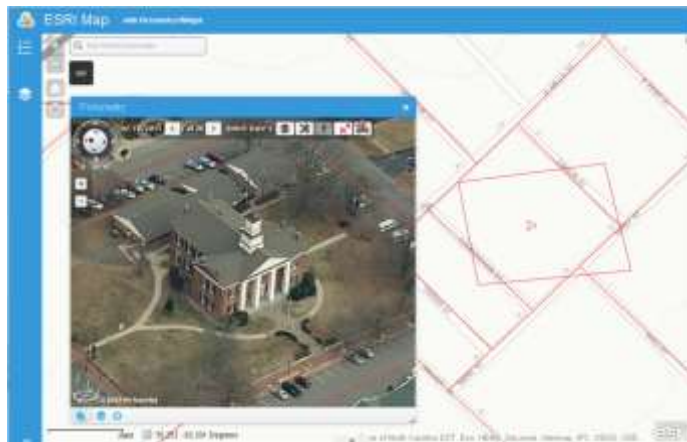
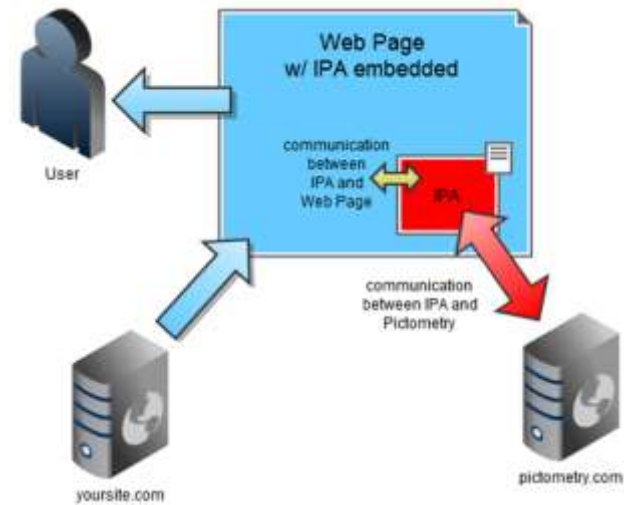


Enterprise CONNECT™ for Government



- IPA (Integrated Pictometry Application)

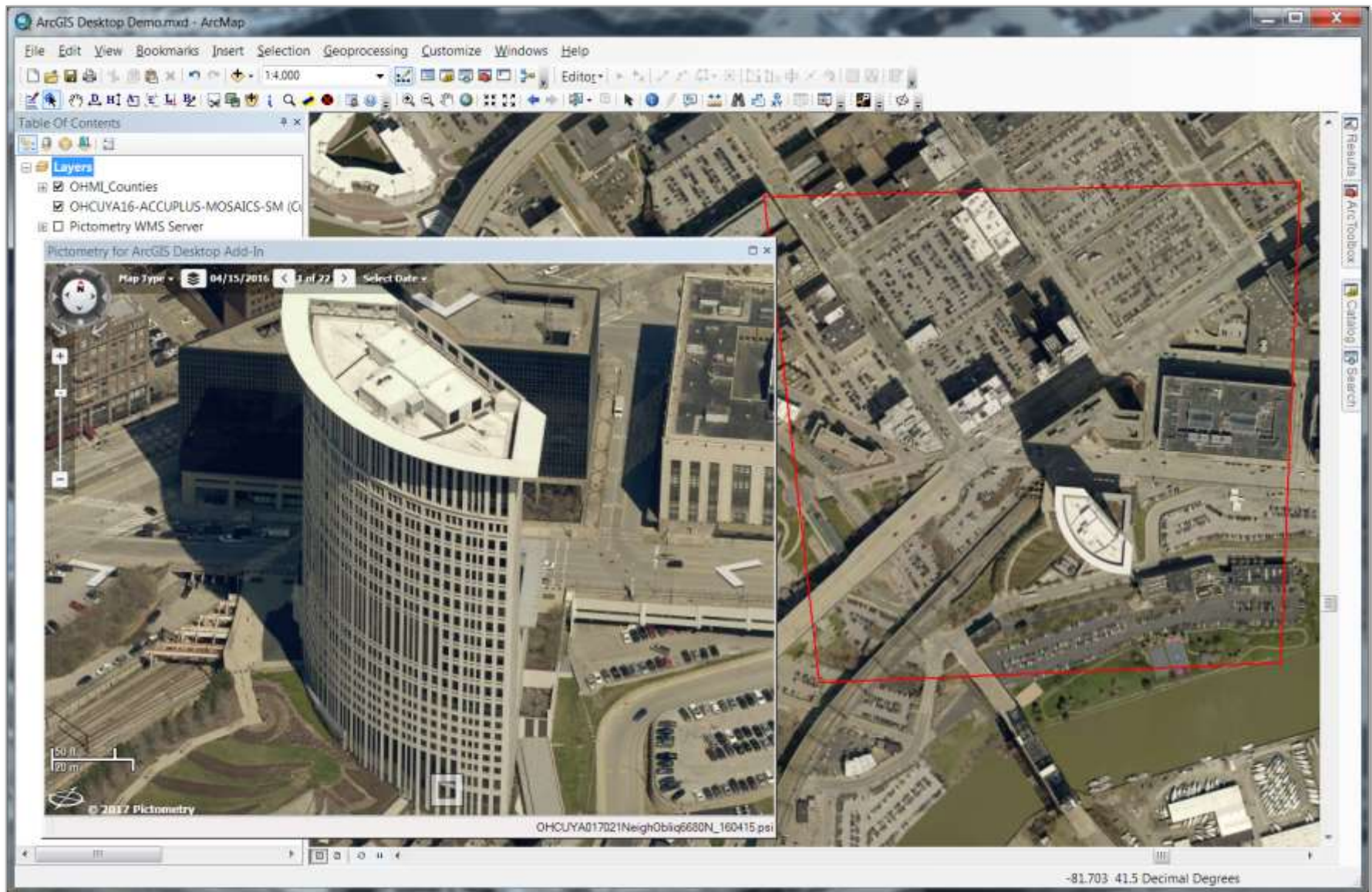
Robust full featured web based JavaScript API



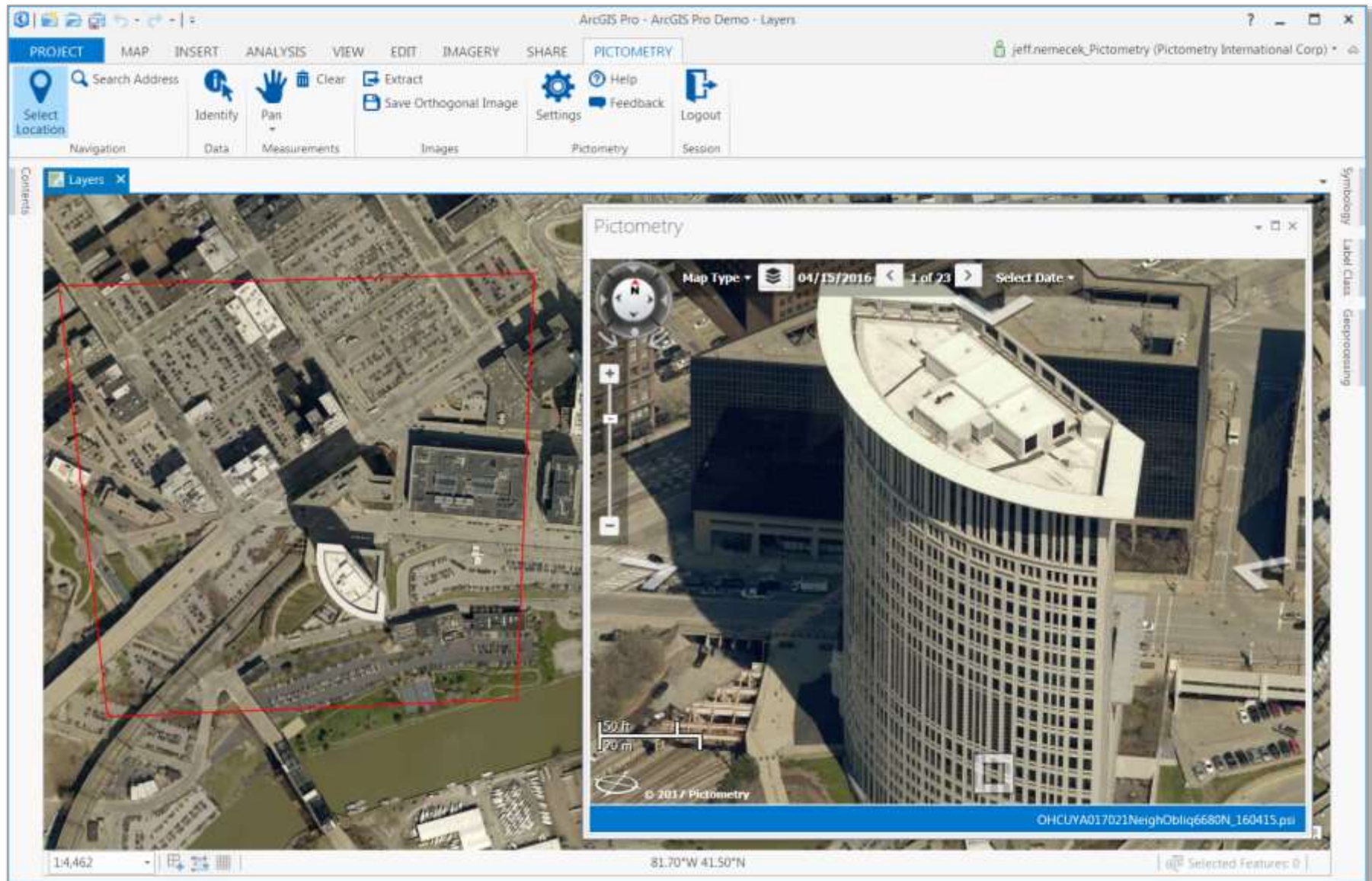
- Pictometry for ESRI's Web AppBuilder

For use with ArcGIS Online

Pictometry CONNECT Add-In for ArcGIS Desktop



Pictometry CONNECT Add-In for ArcGIS Pro



Pictometry Web Integrations

Integrated Pictometry Application

- Robust web component that can be integrated as part of web applications using Javascript API and iFrames
- Can also be embedded into third-party software applications
- Makes call to Pictometry CONNECT cloud-based image library using embedded credential string (no user-level authentication needed)
- No extra server storage needed for imagery data sets, cloud-based
- Turnkey integrations with leading and 3rd party applications
- Utilizes CONNECT-uploaded and/or WFS-enabled service GIS layers for Display, Search, and Identify functions

Esri Web AppBuilder (Dev Edition) Widget

- Server-based widget with IPA-like embedded credential string (no user-level authentication needed)
- Designed to replace Flex and Silverlight-applications with Javascript
- Same technology as IPA but designed for Web AppBuilder
- Currently, works with Developer Edition of Web AppBuilder (per Esri limitations)
- Easily deploy multiple iterations in web mapping applications with wizard-like interface, no need to write code
- Optimized for Mobile browsers
- Requires active CONNECT subscription

Integrated Pictometry Application (IPA) API

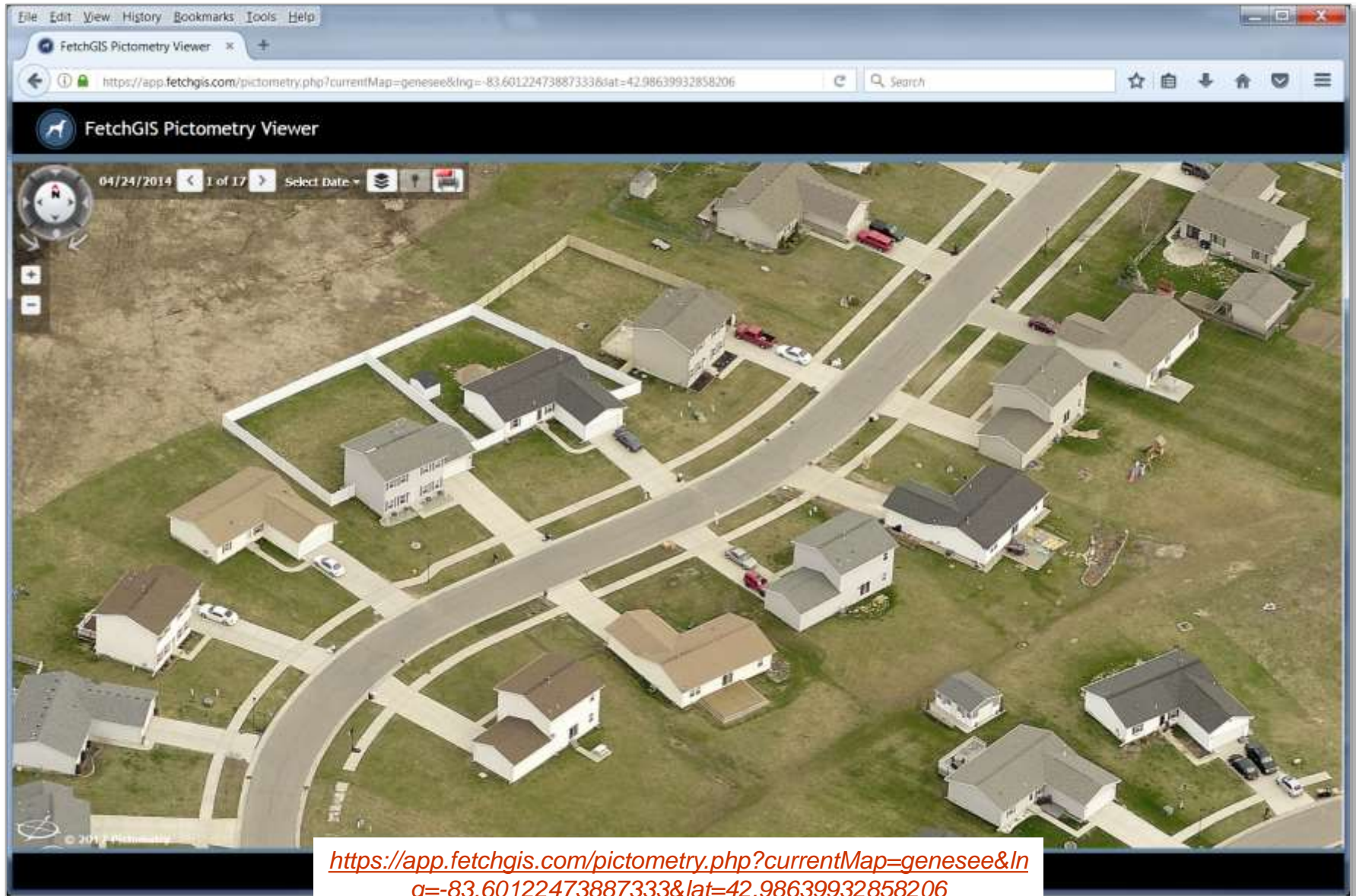


Integrated Pictometry Application

- Robust web component that can be integrated as part of web applications using JavaScript API and iframes
- Can also be embedded into third-party software applications
- Makes call to Pictometry CONNECT cloud-based image library using embedded credential string (no user-level authentication needed)
- No extra server storage needed for imagery data sets, cloud-based
- Turnkey integrations with leading and 3rd party applications
- Utilizes CONNECT-uploaded and/or WFS-enabled service GIS layers for Display, Search, and Identify functions

<http://ddti.starkcountyohio.gov/Data.aspx?ParcelID=1621166>

Amalgam FetchGIS Viewer



Latitude Geographics Geocortex GIS Viewer

The screenshot displays the Cuyahoga County Web Mapping Application interface. The browser window shows the URL <https://maps.cuyahogacounty.us/html5viewer/?viewer=ccgis>. The application header includes the Cuyahoga County logo and the text "CUYAHOGA COUNTY, Ohio Web Mapping Application". A search bar contains the text "trivisonno". Below the header, there are tabs for "Basic Tools", "Navigation", "Measurement and Markup", and "Identify and Query". A toolbar with icons for Home, Identify, Initial View, Print, Export, Share, and Pictometry is visible. The main content area shows a map of a residential area with a red marker. A sidebar on the left displays details for "Parcel 39730097", including a description, owner information (TRIVISONNO, MICHAEL J. JR.), address (17018 BRITTANY PL, STRONGSVILLE, OH, 44136), and other details like PARCELPIN, NO_LIST_INFO, PARCEL_YEAR, and PARCEL_OWNER. A "Help Guide" button is located in the top right corner of the map area. The bottom of the page features social media links and the text "https://maps.cuyahogacounty.us/html5viewer/?viewer=ccgis".

File Edit View History Bookmarks Tools Help

CCGIS Viewer - Desktop

Cuyahoga County (US) <https://maps.cuyahogacounty.us/html5viewer/?viewer=ccgis> Search

CUYAHOGA COUNTY, Ohio

Web Mapping Application

trivisonno

Basic Tools Navigation Measurement and Markup Identify and Query

Home Identify Initial View Print Export Share Pictometry

Parcel 39730097

Description

See parcel details in MyPlace

Owner: TRIVISONNO, MICHAEL J. JR.
Address: 17018 BRITTANY PL, STRONGSVILLE, OH, 44136

Details

PARCELPIN
39730097

NO_LIST_INFO
N/A

PARCEL_YEAR
2017

PARCEL_OWNER
TRIVISONNO, MICHAEL J. JR.

GRANTOR

I want to... Drag the marker on the map to update the corresponding map view.

Help Guide

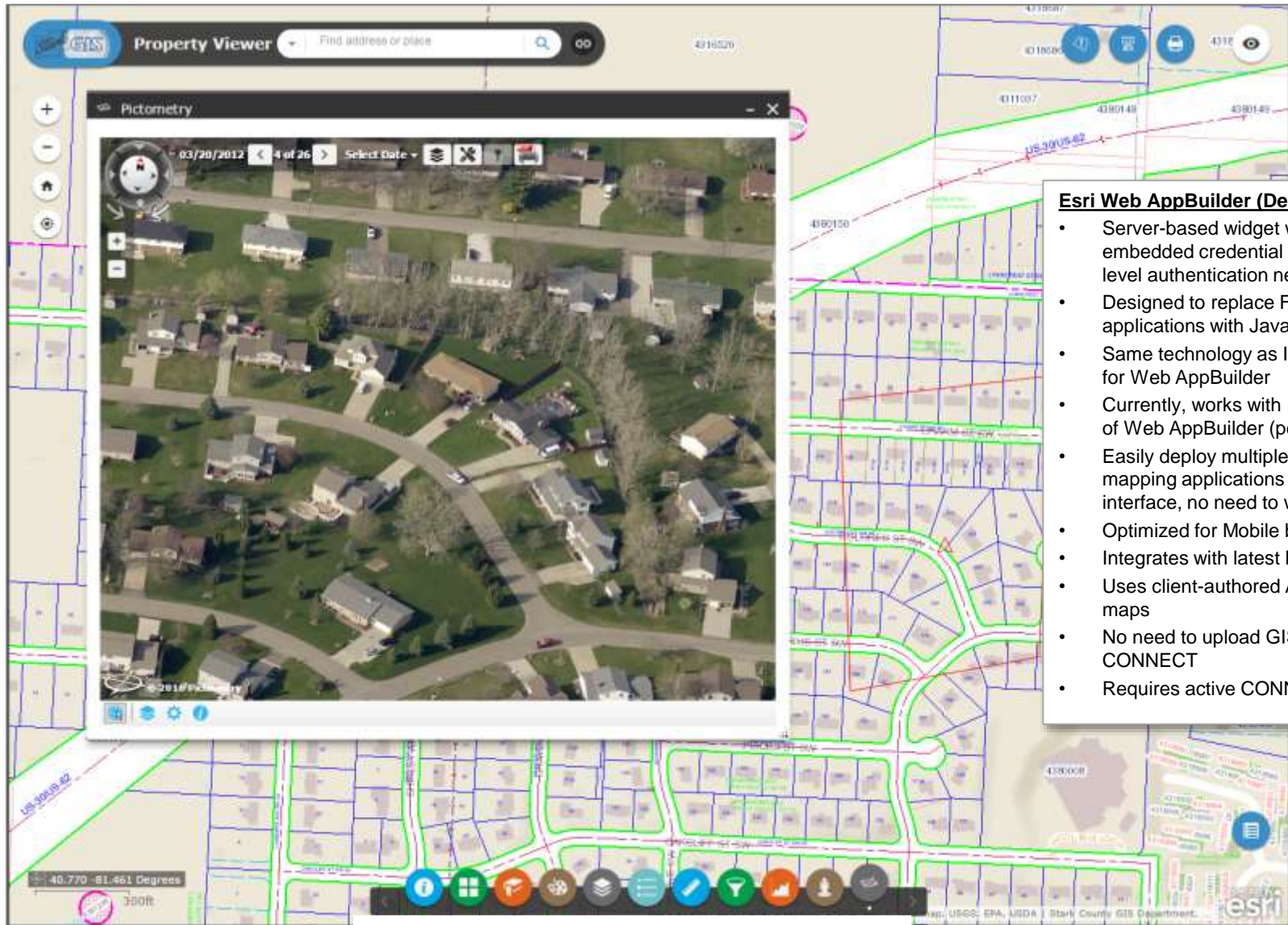
Select Map

03/26/2016 1 of 26 Select Date

<https://maps.cuyahogacounty.us/html5viewer/?viewer=ccgis>

intact.its Cuyahoga County GIS Powered by Geocortex

Pictometry Widget for Esri Web AppBuilder



Esri Web AppBuilder (Dev Edition) Widget

- Server-based widget with IPA-like embedded credential string (no user-level authentication needed)
- Designed to replace Flex and Silverlight applications with JavaScript
- Same technology as IPA but designed for Web AppBuilder
- Currently, works with Developer Edition of Web AppBuilder (per Esri limitations)
- Easily deploy multiple iterations in web mapping applications with wizard-like interface, no need to write code
- Optimized for Mobile browsers
- Integrates with latest ESRI technologies
- Uses client-authored ArcGIS Online web maps
- No need to upload GIS layers to CONNECT
- Requires active CONNECT subscription

Esri switching to Javascript

- Flex/Silverlight-based websites are still being employed but rapidly transitioning to HTML5/JavaScript-based formats
- Esri ending technical support for Flex and Silverlight June 2016 → transitioning to JavaScript and HTML5

Final Release and Support Plan for the ArcGIS APIs / Viewers for Flex and Silverlight

by [Greg Lehner](#) on [November 10, 2014](#)

The next release of each ArcGIS API and Viewer (for Flex and Silverlight) will be significant in that they are the last planned releases of two once-popular technologies. While technical support will be available for both APIs and viewers through June of 2016, maintenance of these products will be discontinued. Customers who develop with these products should begin exploring web solutions that are based on JavaScript or HTML5.

Web AppBuilder for ArcGIS (Developer Edition)

Key Features:

- Create HTML/JavaScript apps that work on desktop browsers, tablets, and smartphones.
- Integrated with the ArcGIS Online and Portal for ArcGIS platforms.
- Build the apps you need using ready-to-use widgets, such as query, geoprocessing, print, and more.
- Create custom app templates.
- Extensible framework for developers to create widgets and themes.
- Web AppBuilder allows you to create apps by accessing workflow tabs including Theme, Map, Widget, and Attribute.

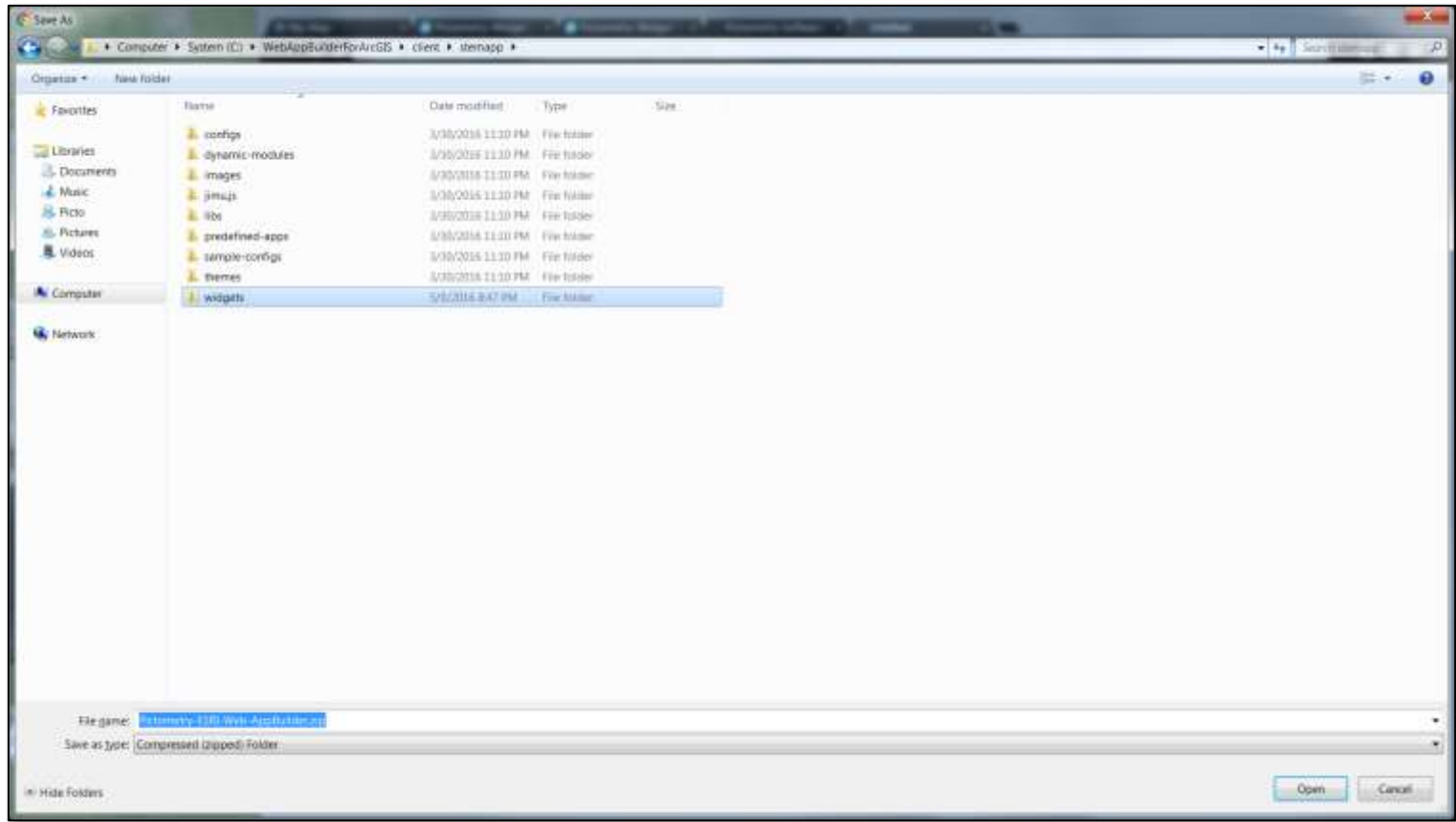
Benefits:

- Integrates with latest ESRI technologies
- Uses client-authored ArcGIS Online web maps
- Mobile ready
- Provides users with access to Pictometry imagery: a library of images taken on multiple dates and from multiple angles that allow your users to view the actual features corresponding to any location on your maps.
- Similar look and feel to other Pictometry interfaces
- GIS layers from web map are displayed in Widget without need to upload to CONNECT
- Once deployed, easy to deploy again and again in other web mapping applications

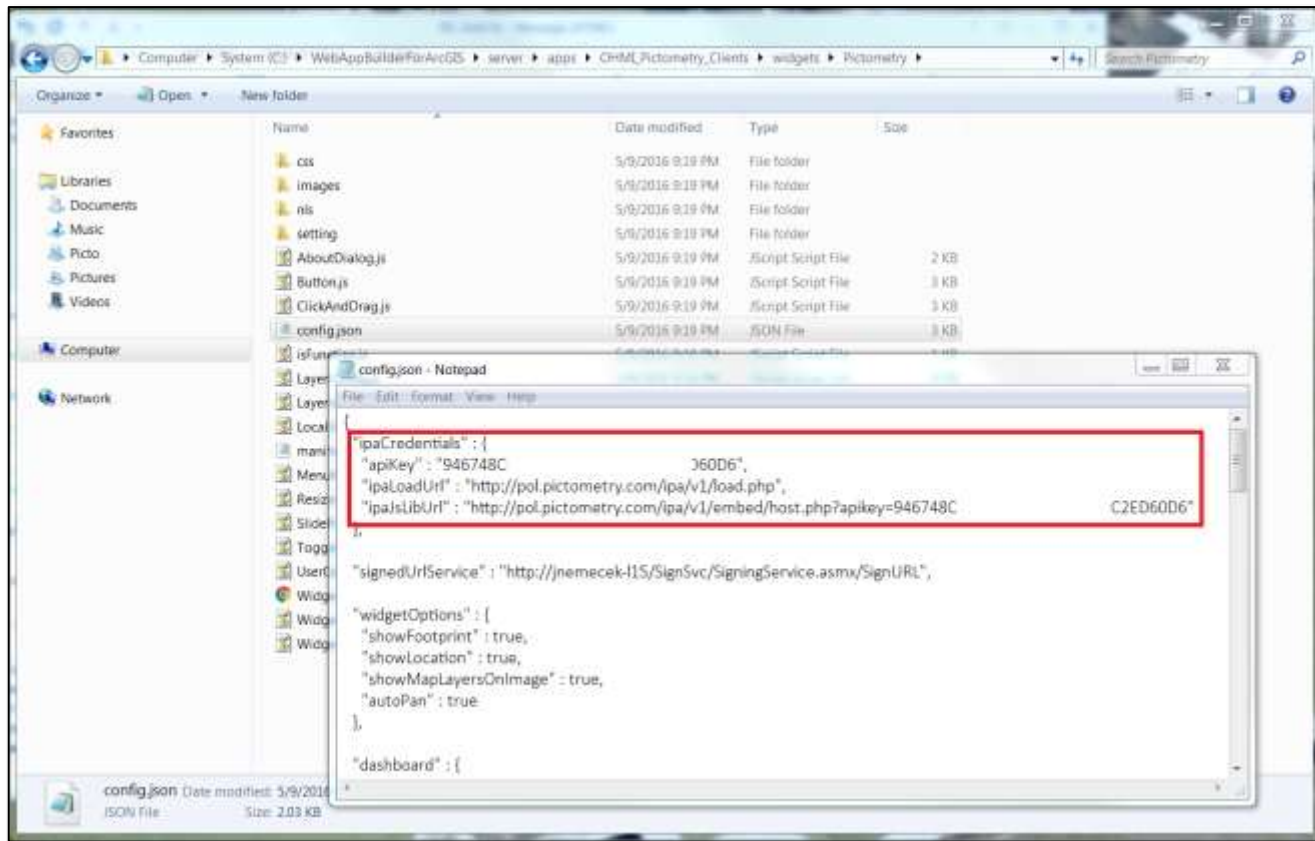
Considerations

- Requires more technical background than “just GIS” – basic knowledge in Internet Information Services and JavaScript is suggested
- Requires a web server to stand up a Signing Service for authentication
- If deploying imagery to *public*, requires CONNECT View, separate cost

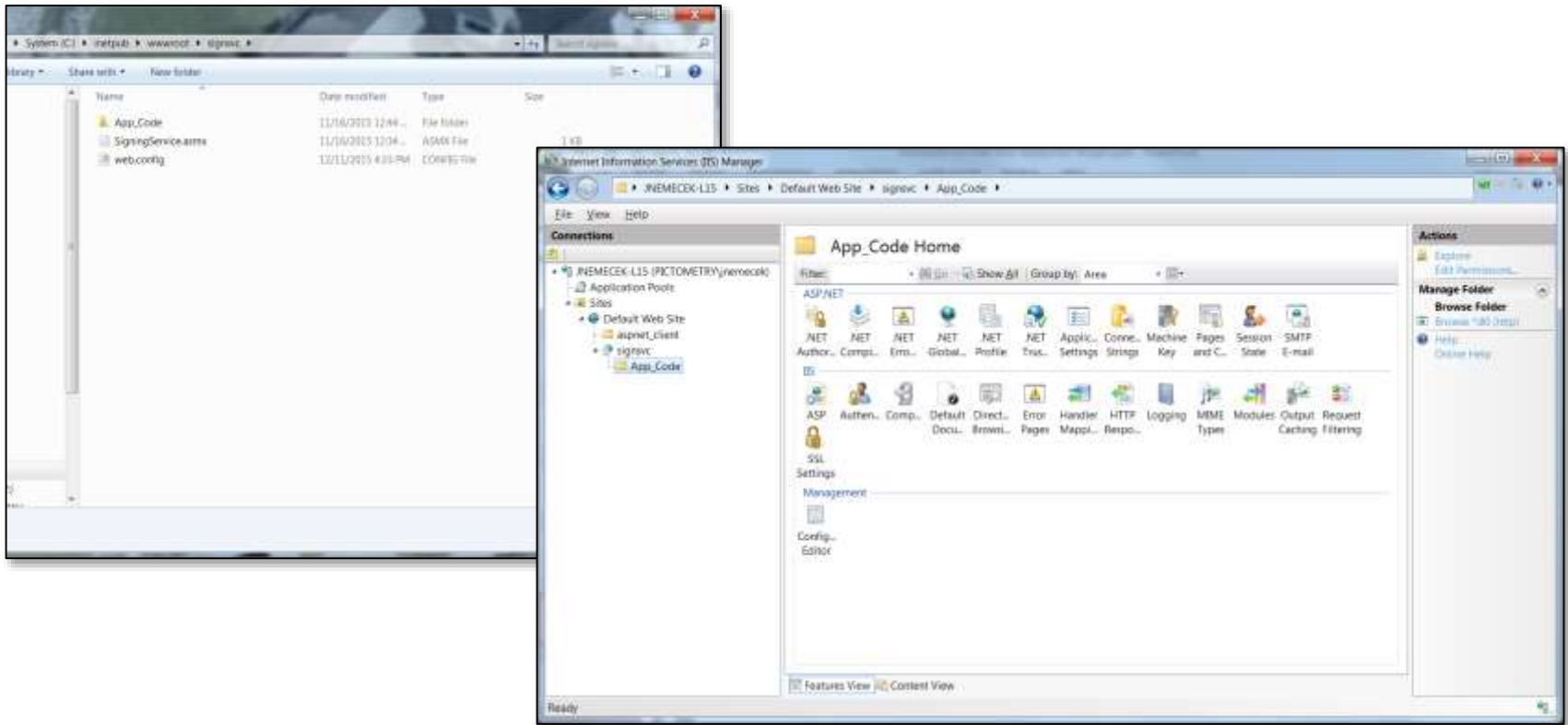
Deploying the Widget



Deploying the Widget




Signing Service Authentication



Deploying the Widget

Create a New Web App



Title

Factory Widget

Description

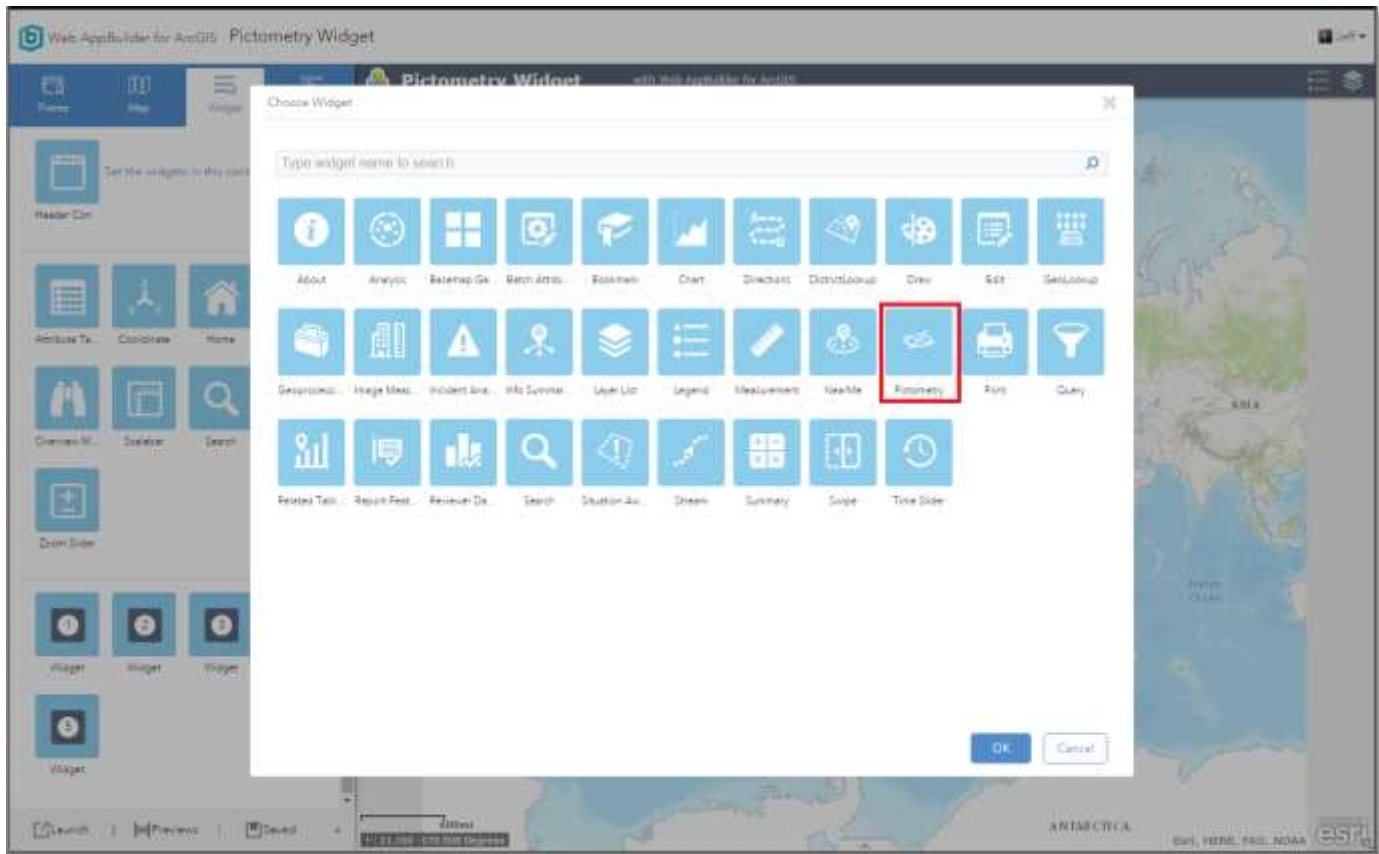
Factory Widget

Back

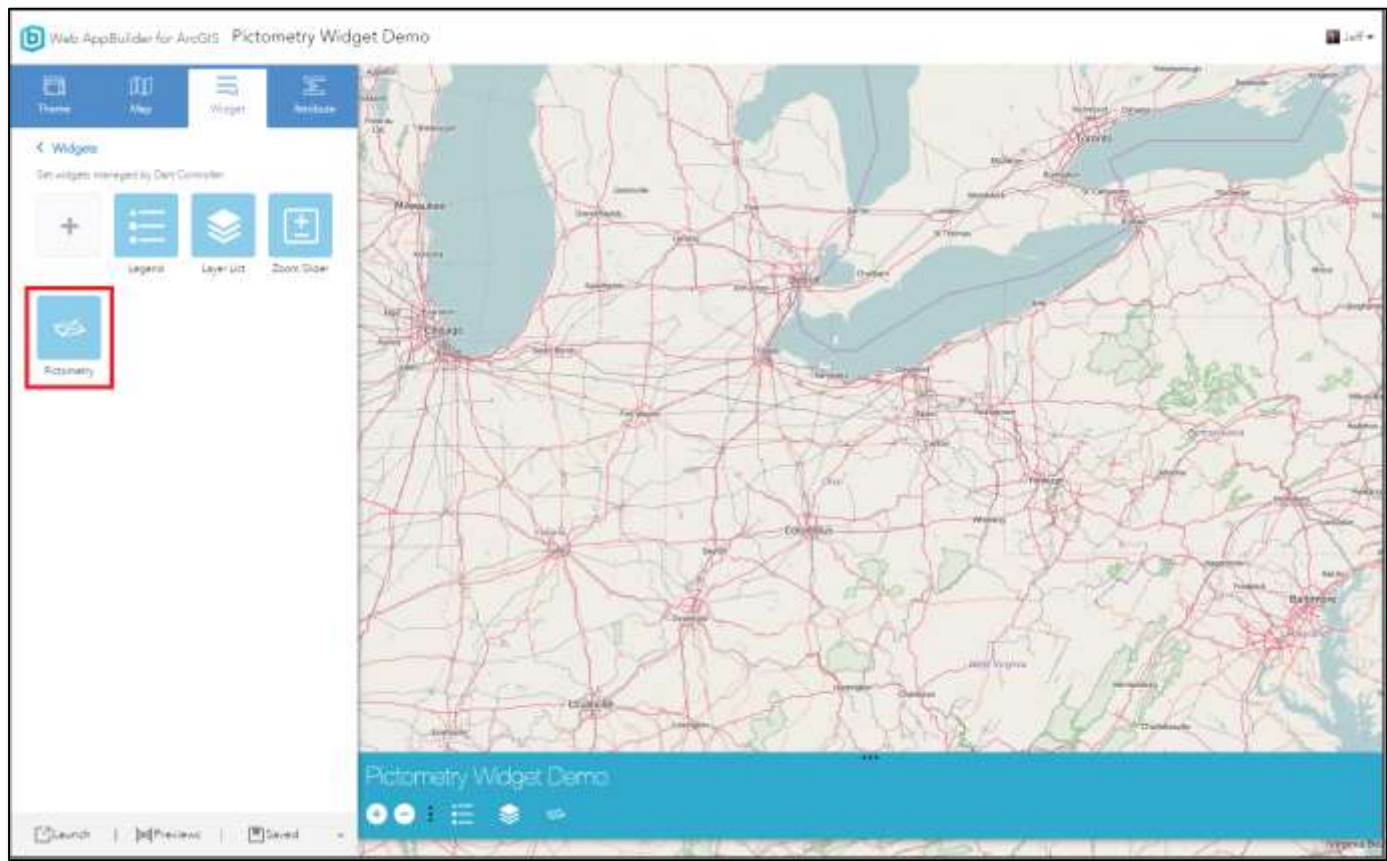
OK

Cancel

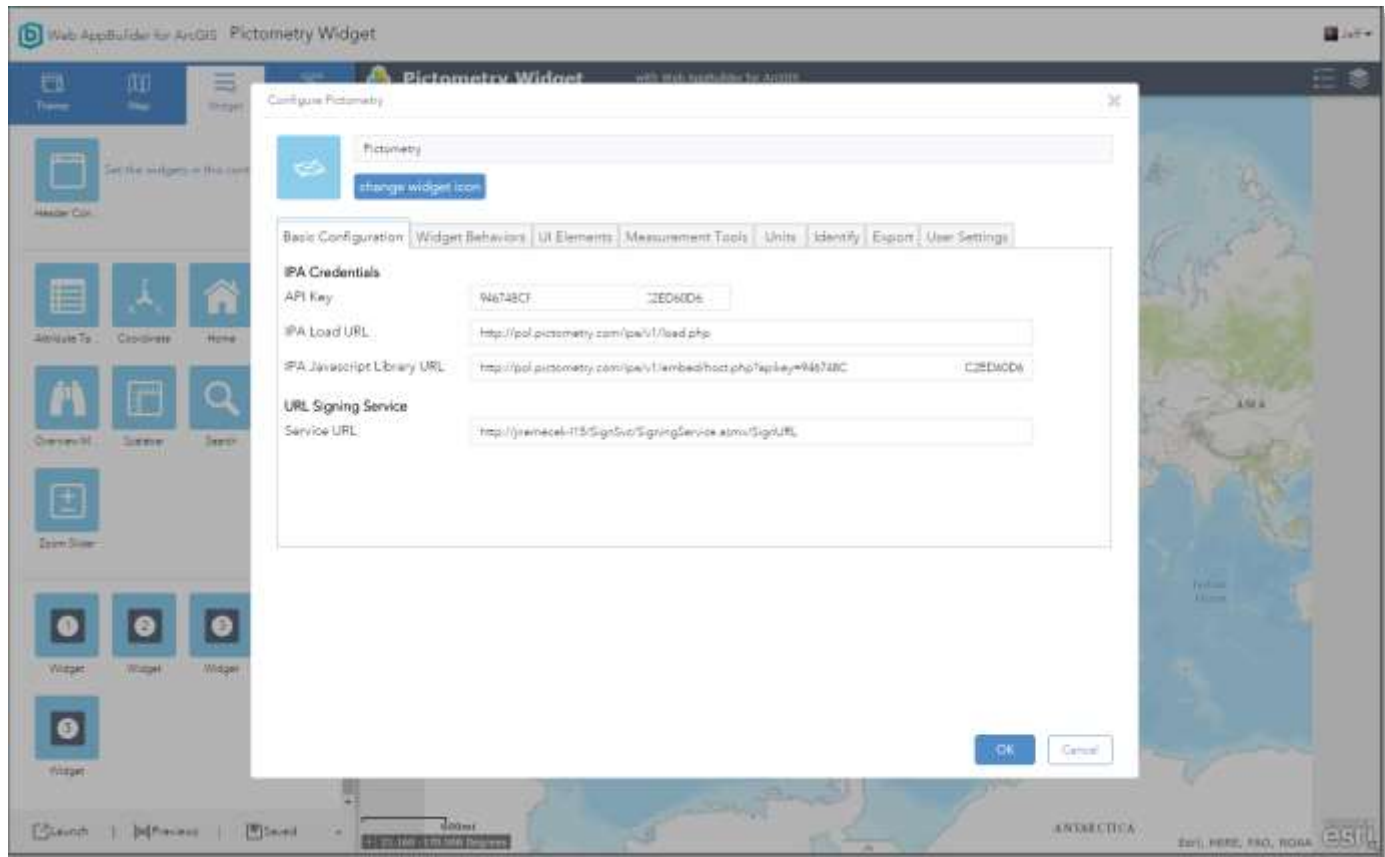
Deploying the Widget



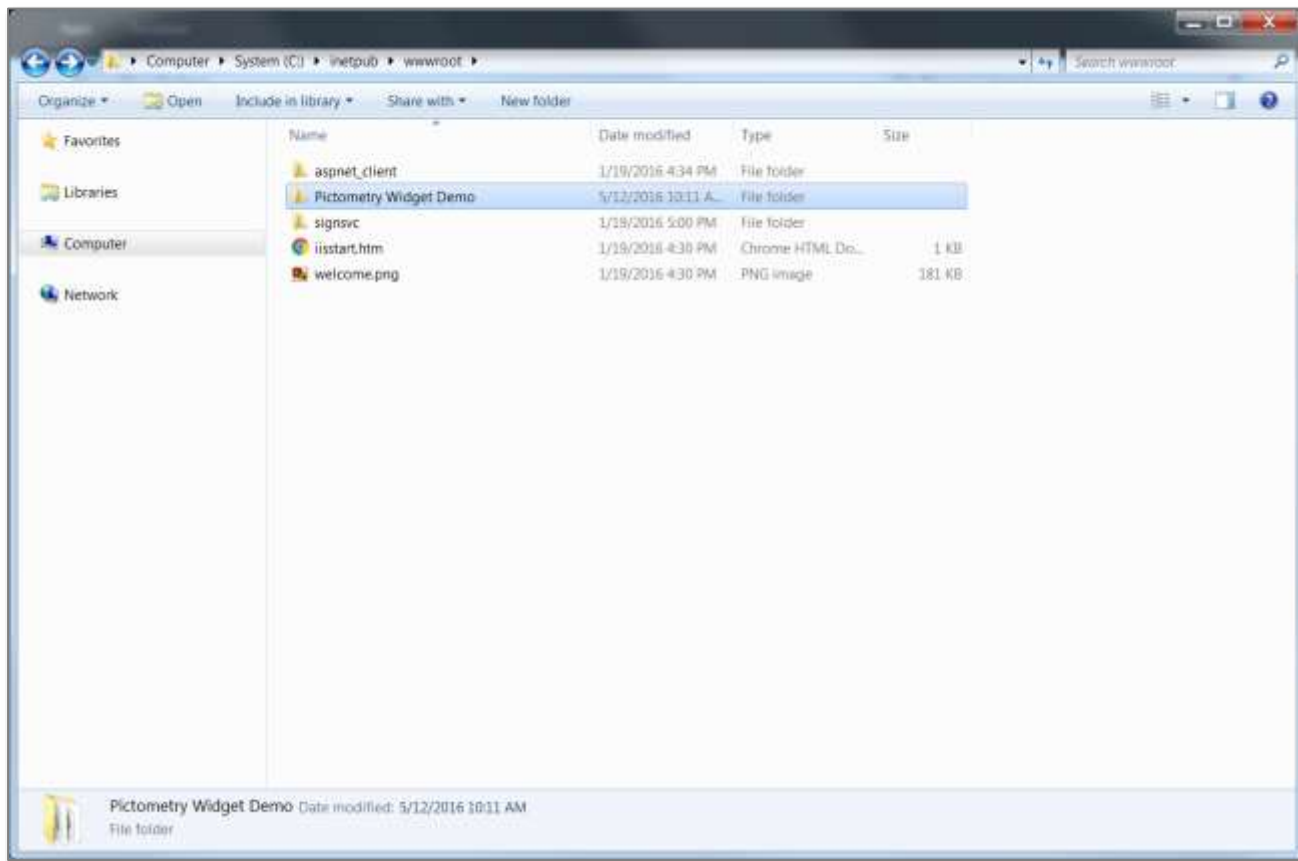
Deploying the Widget



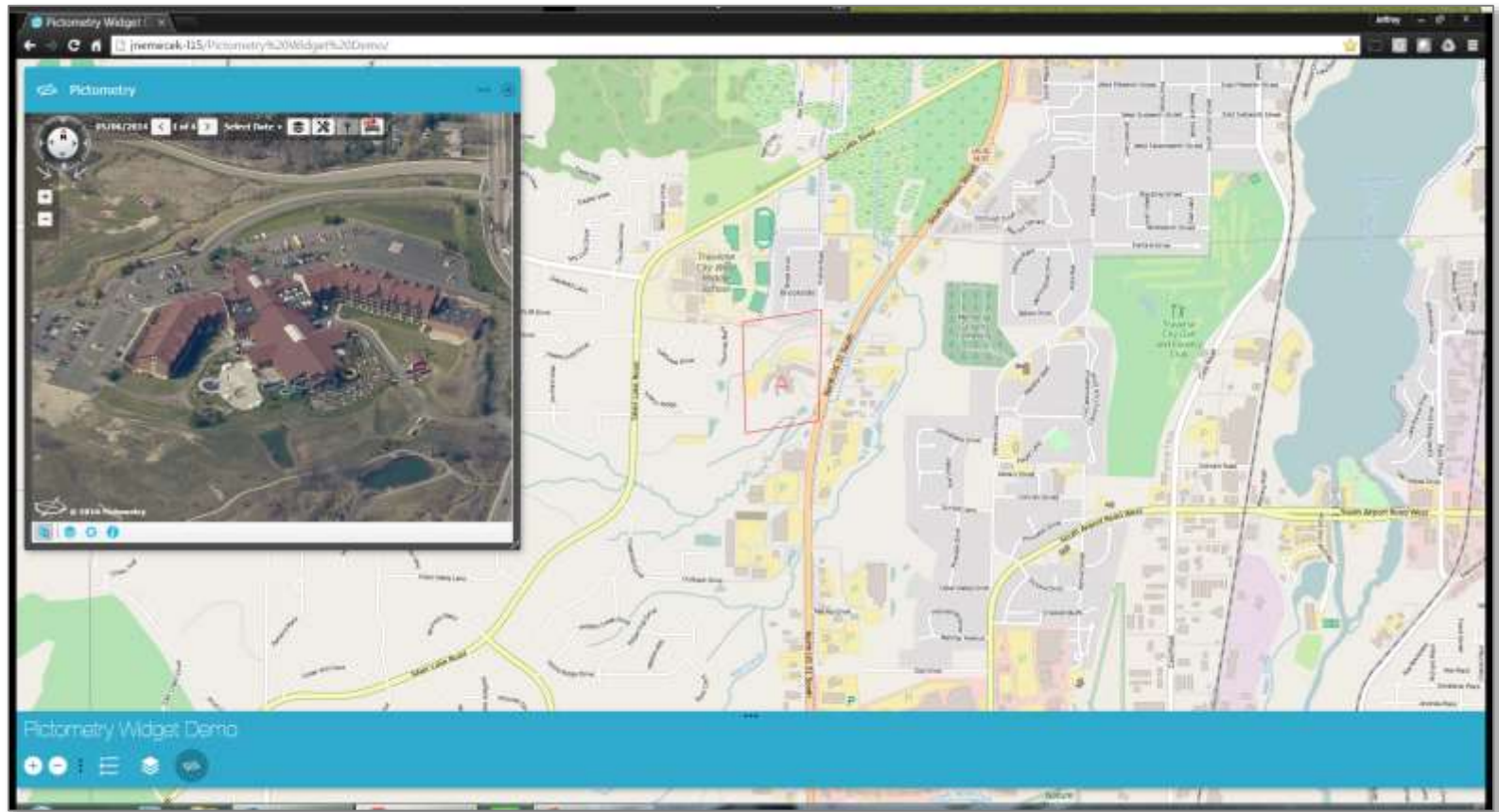
Deploying the Widget



Deploying the Widget



Deploying the Widget





Demonstration



EagleView Team Michigan Ohio

District Manager

Brian Kienle, GISP

P: 614.323.5099

E: brian.kienle@eagleview.com



Regional Technical Manager

Jeffrey Nemecek, GISP

P: 419.341.2493

E: jeff.nemecek@eagleview.com

