



ArcGIS QuickCapture

Product Overview

Ismael Chivite ichivite@esri.com

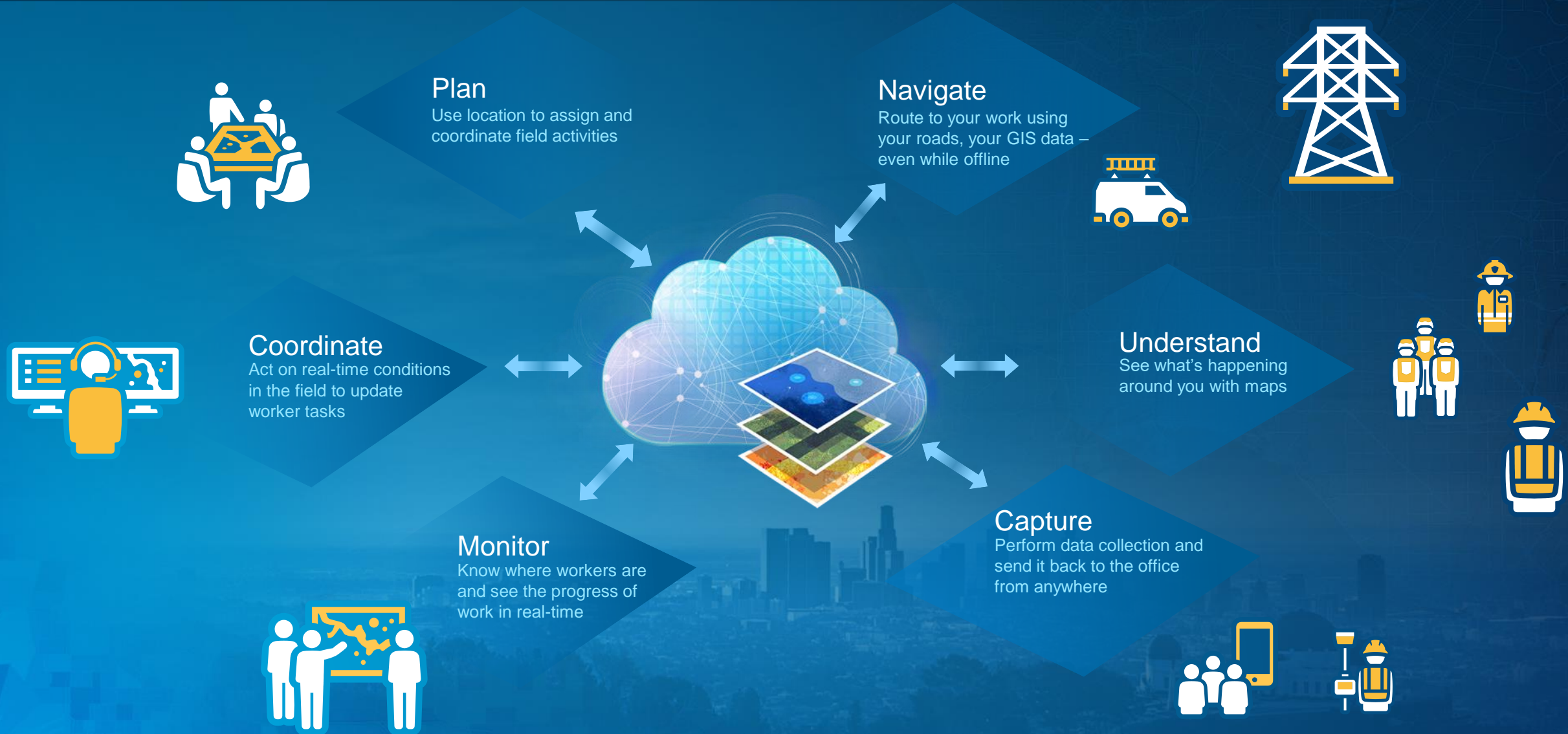
IMAGIN 2019, Grand Rapids, Michigan

June 11, 2019



Field Operations in ArcGIS

Optimize field operations with the power of location



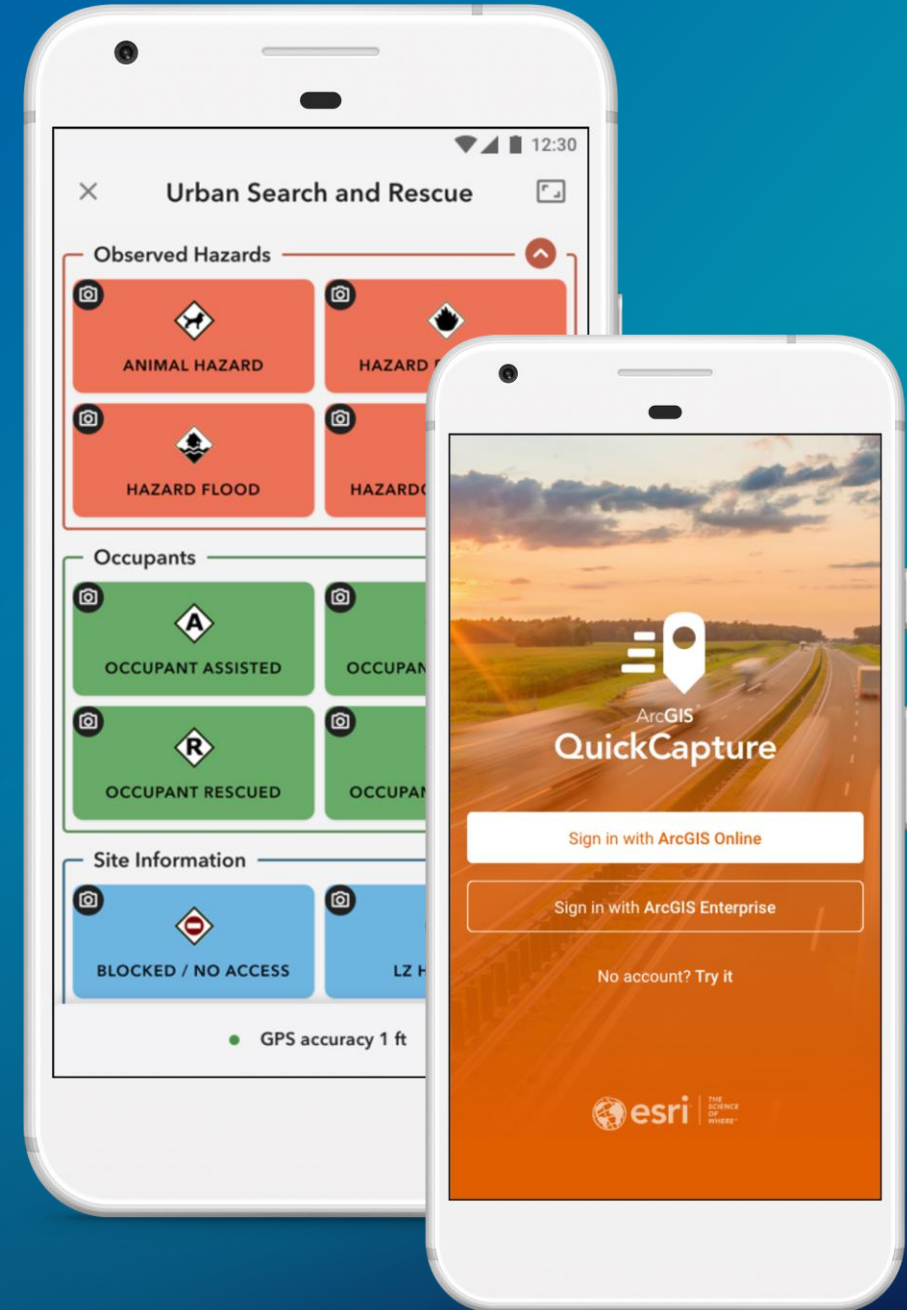
ArcGIS QuickCapture

The rapid data collection app

A “big button” mobile app

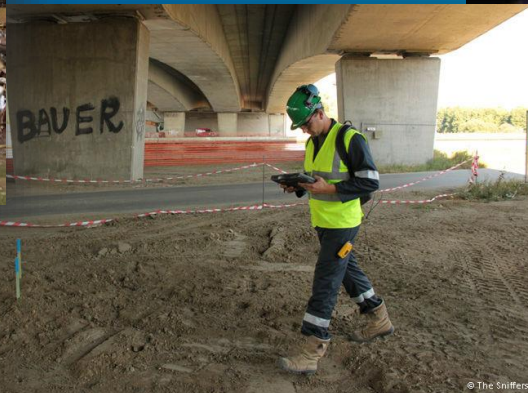
Simplest way to capture field observations

At-speed data collection workflows

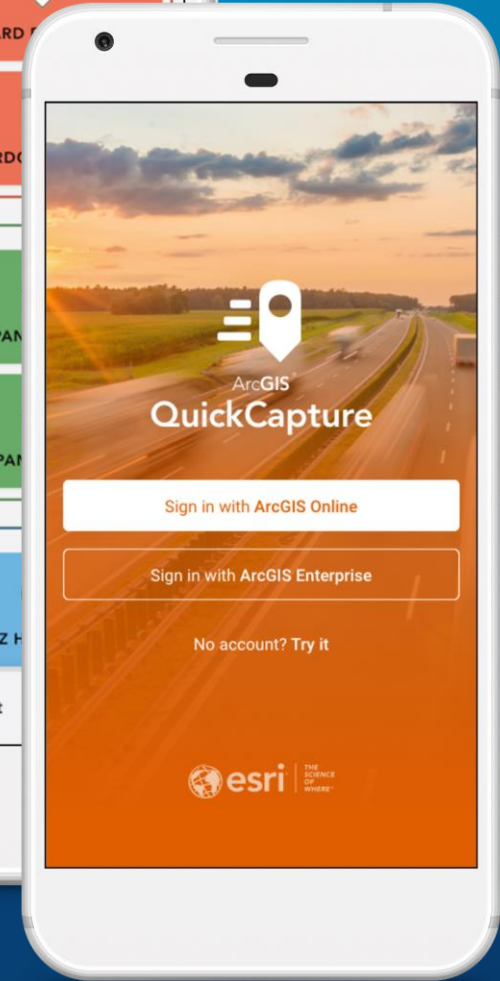
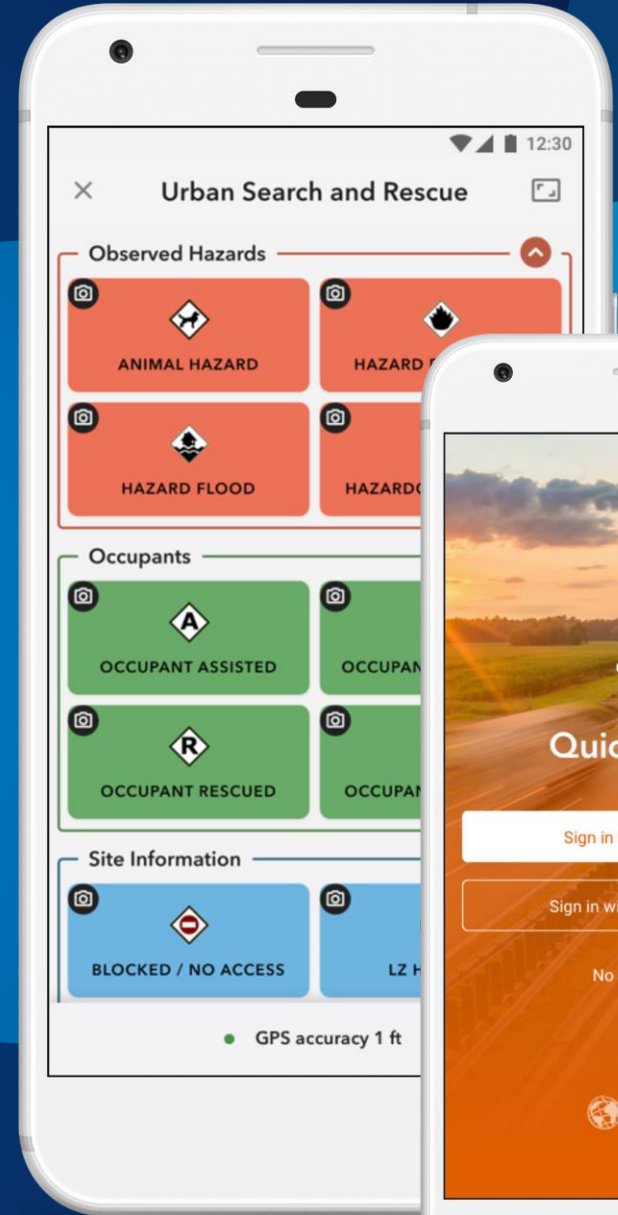




An efficient data collection solution for at-speed and rapid data collection workflows



Quick Demo...

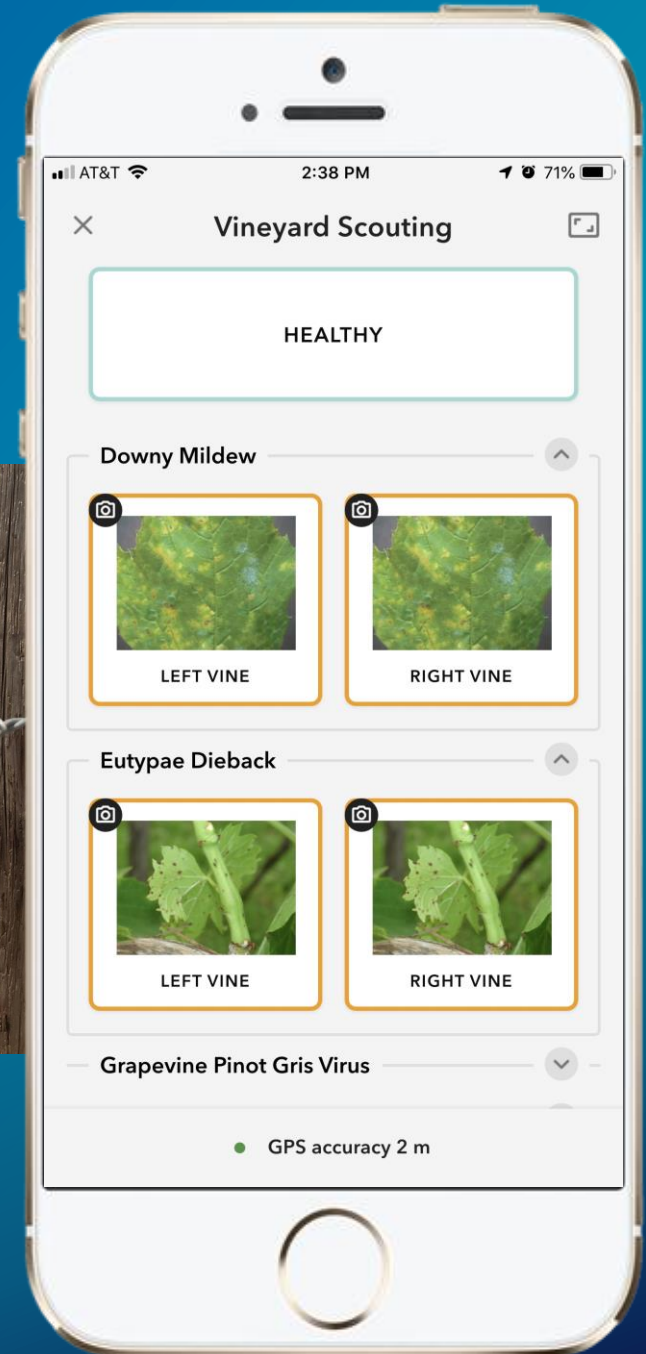
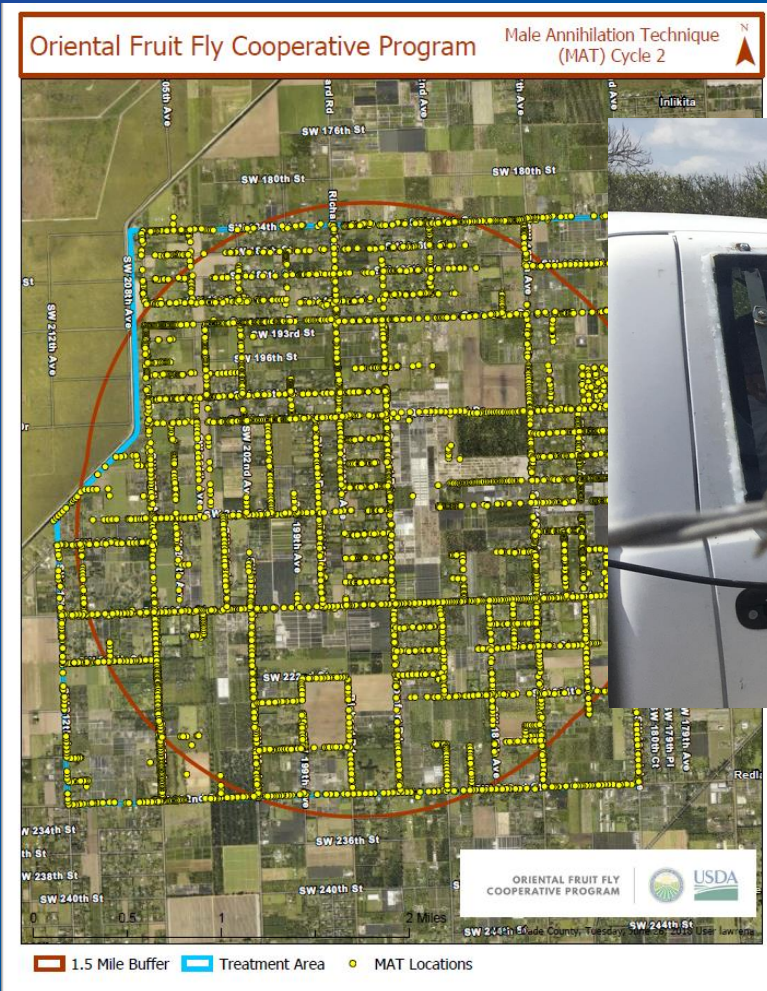




Some use cases...

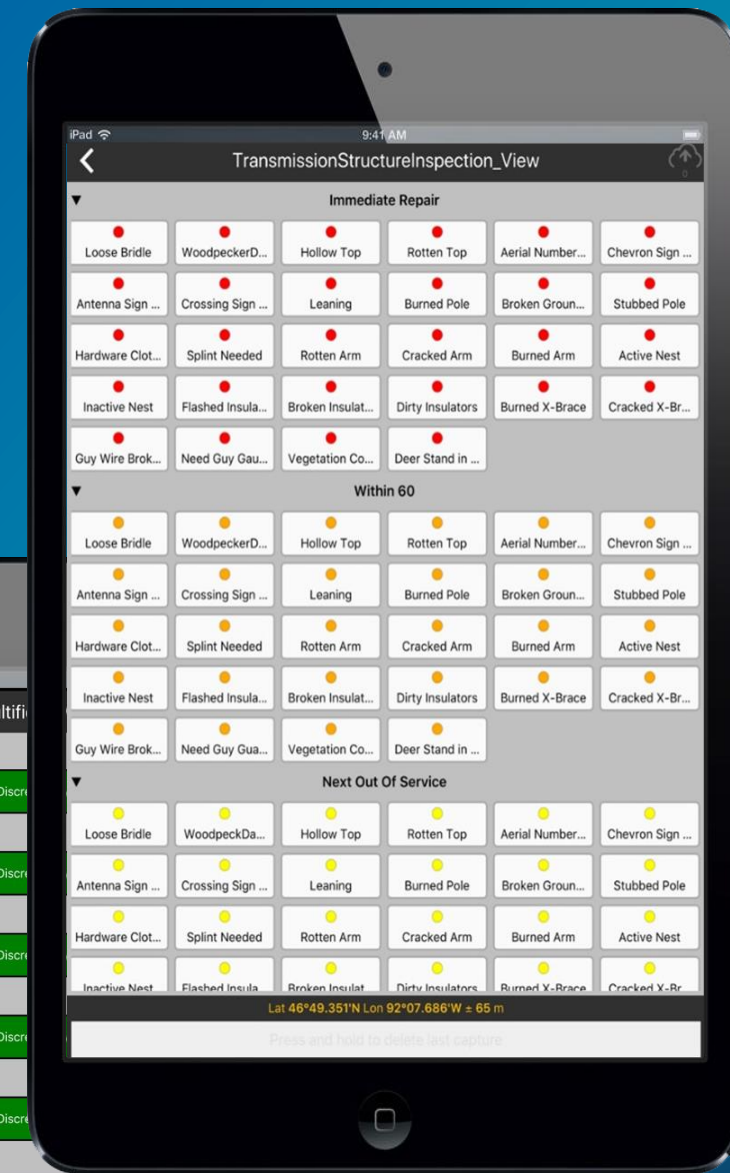
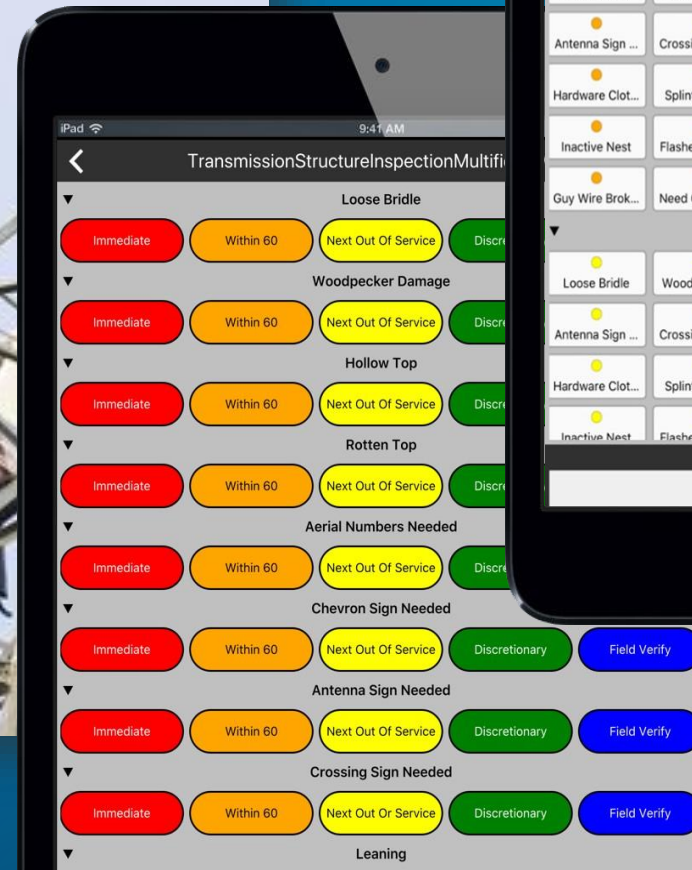
Agriculture

Crop scouting, weed abatement and growth monitoring



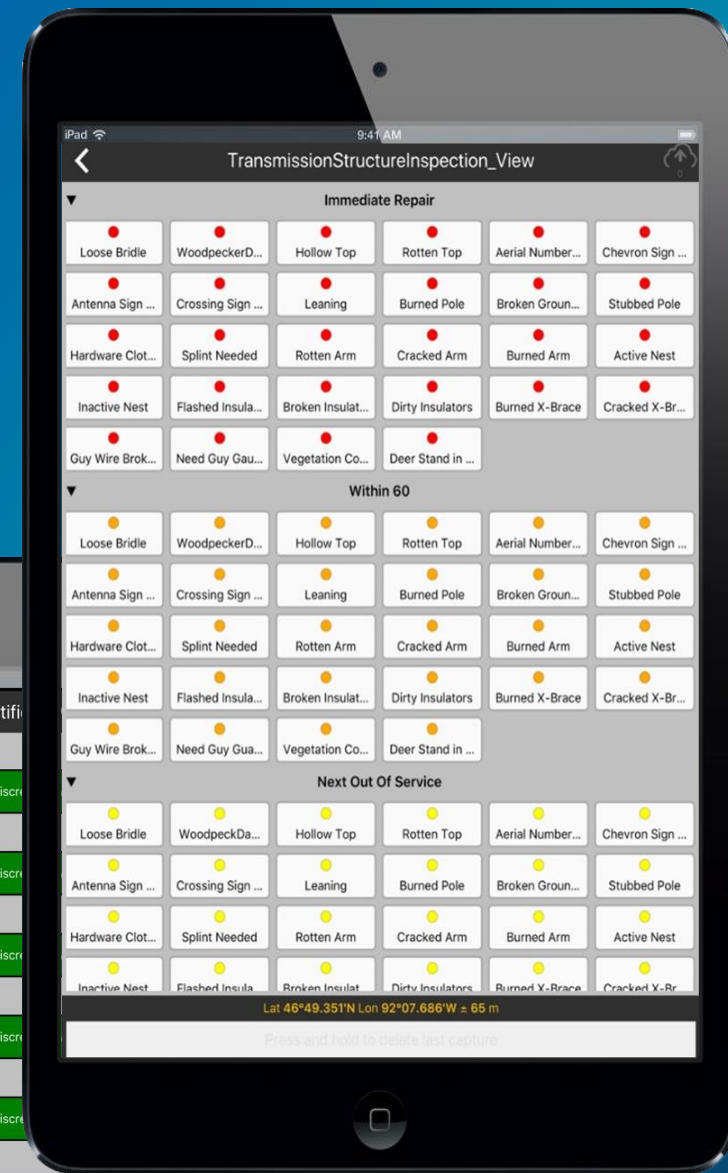
Aerial pipeline and powerline patrols

Gas and Electric utilities. Oil companies.



Aerial pipeline and powerline patrols

Gas and Electric utilities. Oil companies.



Emergency Response

Windshield and rapid damage assessments.



Civil Defence West Coast
Page Liked · October 29 ·

We are so lucky to have this guy John Stowell on our team!

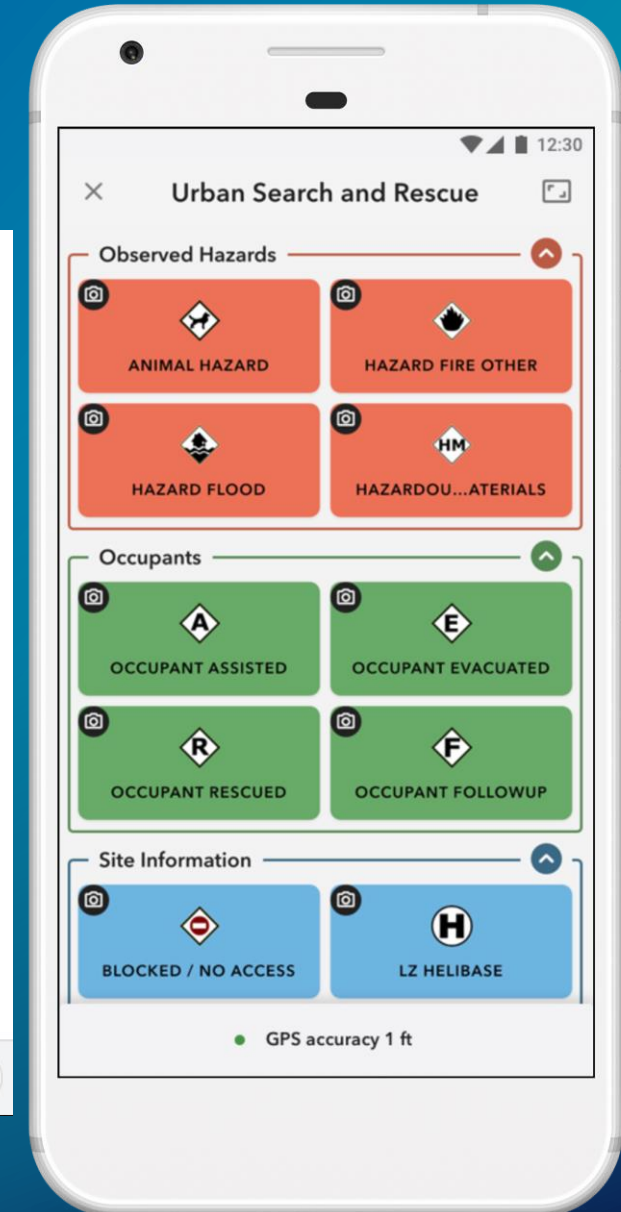
In this photo John is showing us the QuickCapture software which he has implemented into our GIS system. Last week we trained our Rapid Assessment Team on how to use it which was a great success and now the USAR Exercise Arahura teams are using this information.

QuickCapture allows us to capture the GPS location + image of a predefined f... See More — with John Andrew, Buller District Council, Grey District Council, Westland District Council, Fire and Emergency NZ, West Coast Regional Council, New Zealand USAR Taskforce and Fire and Emergency New Zealand, West Coast Area.

54 5 Comments 6 Shares

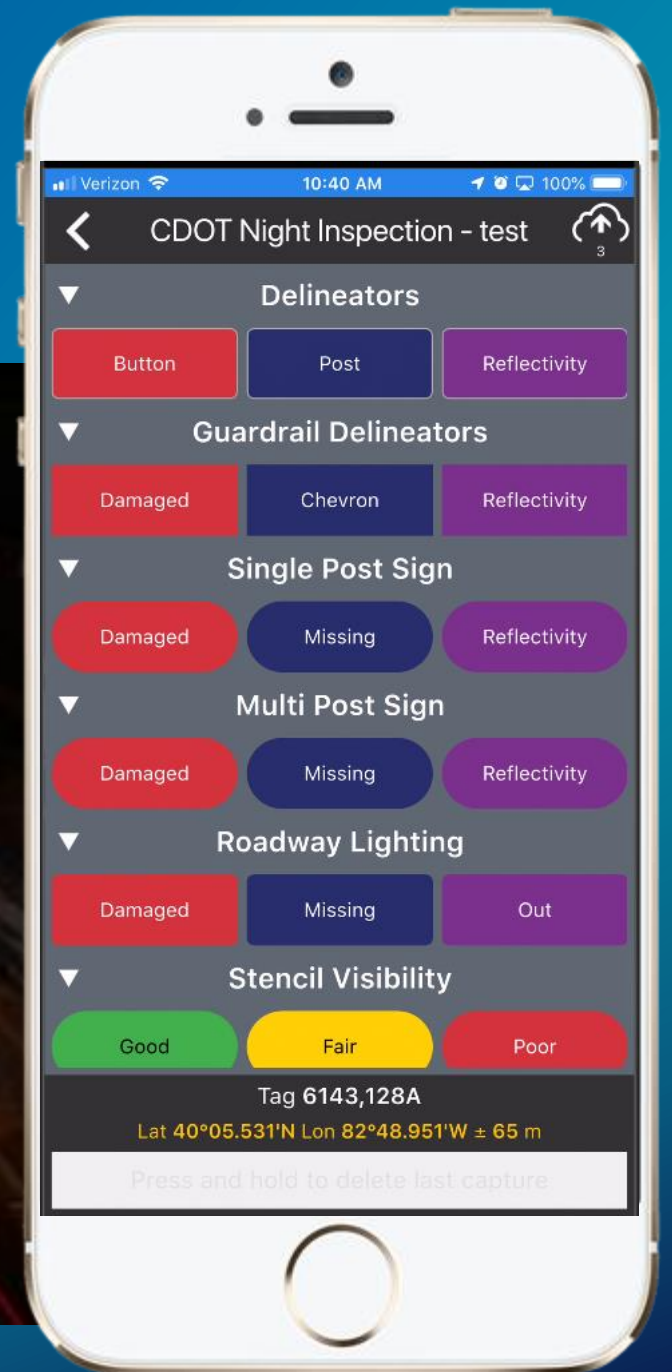
Like Comment Share

Write a comment...



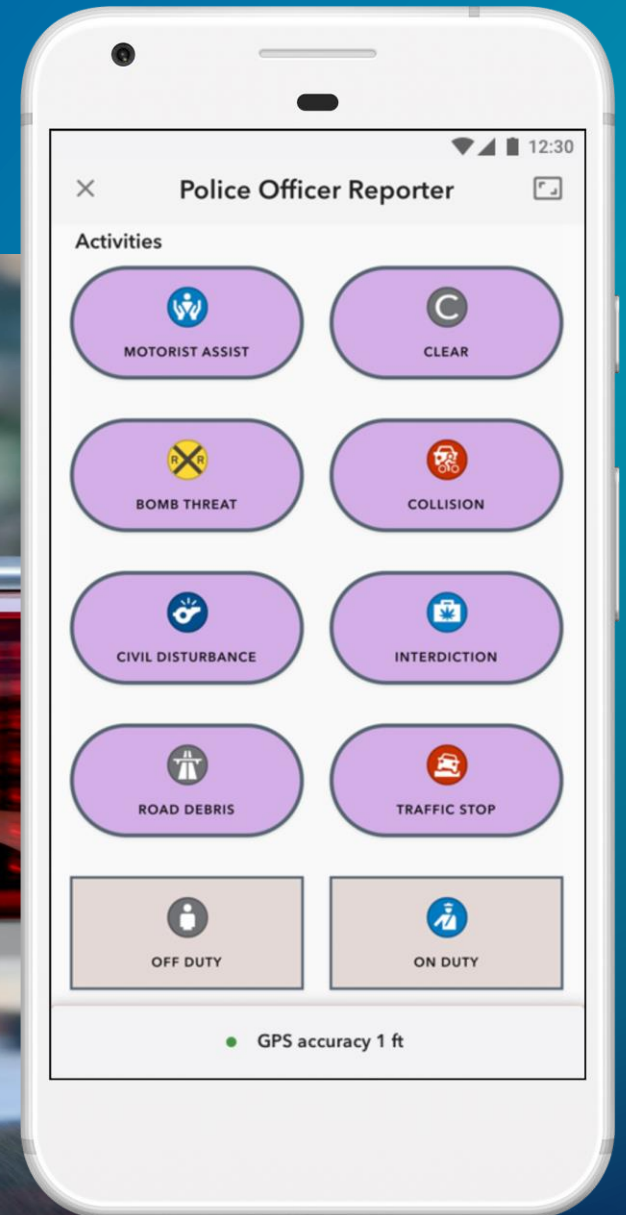
Transportation

Night retro-reflectivity inspections and at-speed road asset inventories



Public Safety

Police Officer Activity Reporter



Non-Profit

Digitizing and maintaining bicycle network



Conservation

Noxious weed programs

The screenshot shows the King County website's page for "Noxious weeds in King County, Washington". The page features a navigation menu with "Home", "How do I...", "Services", "About King County", and "Departments". A search bar is located in the top right corner. The main content area includes a breadcrumb trail: "Home » Services » Environment » Animals, plants and habitat » Noxious weeds". The title "Noxious weeds in King County, Washington" is prominently displayed. Below the title, a paragraph explains that noxious weeds are a danger to the environment and economy, costing millions of dollars in lost agricultural production and environmental degradation. A "Follow us" section includes links for Instagram and a Blog. A "Sign up for KC Weed News" form is present, with a "Subscribe" button. A "Search for other weeds" section lists six types of weeds with corresponding images: Poison-hemlock, Tansy Ragwort, Giant Hogweed, Blackberry, Knotweed, and Garlic mustard. A "Languages" section offers information in Spanish, Vietnamese, Simplified Chinese, Somali, and Russian. A "News and announcements" section links to "Noxious Weed News - Noxious weeds". A sidebar on the left contains a menu with items like "Animals, plants and habitat", "Noxious weeds", "About us", "Report a weed", "Weed identification photos", "Weed lists and laws", "Maps", "Brochures, reports and publications", "Class schedule", "Languages", "Fairs and events calendar", "Weed control, IPM and BMP's", "Knotweed projects", "Weed watchers", "Volunteer information", "School resources", "Frequently asked questions", and "Noxious weeds blog". The footer contains navigation options: "Information for...", "Do more online", "Get help", and "Español".

King County

Search Kingcounty.gov

Home How do I... Services About King County Departments

Home » Services » Environment » Animals, plants and habitat » Noxious weeds

Noxious weeds in King County, Washington

Noxious weeds are a danger to our environment and the economy. These introduced species cost our region millions of dollars in lost agricultural production, environmental degradation and added maintenance costs. Once invasive plants spread to natural areas, they harm native plants and wildlife and can be impossible to eradicate.

Follow us

Instagram Blog

Sign up for KC Weed News

Enter email address

Languages

Find information on noxious weed identification and control in multiple languages:

[Español \(Spanish\)](#)

[Tiếng Việt \(Vietnamese\)](#)

[中文: 简体版 \(Simplified Chinese\)](#)

[Af-Soomaali \(Somali\)](#)

[русский язык \(Russian\)](#)

News and announcements

[Noxious Weed News - Noxious weeds](#)

Search for other weeds

Identify and learn about weeds and invasive plants

- [Photo guide and index to weed information pages](#) - Look up specific weeds to learn about each plant's impacts, growth, control methods and identification
- [Weed lists and laws](#) - King County Weed List, definition of noxious weed, Washington State Weed Law

Report a Weed

Information for... **Do more online** **Get help** **Español**



Licensing and Schedule

Licensing and pricing

Included with Field Workers, Creators and GIS Professionals
Optional add-on for Editor user types (\$60/year)



Viewer
(not applicable)



Editor
(add-on)



Field Worker
(included)



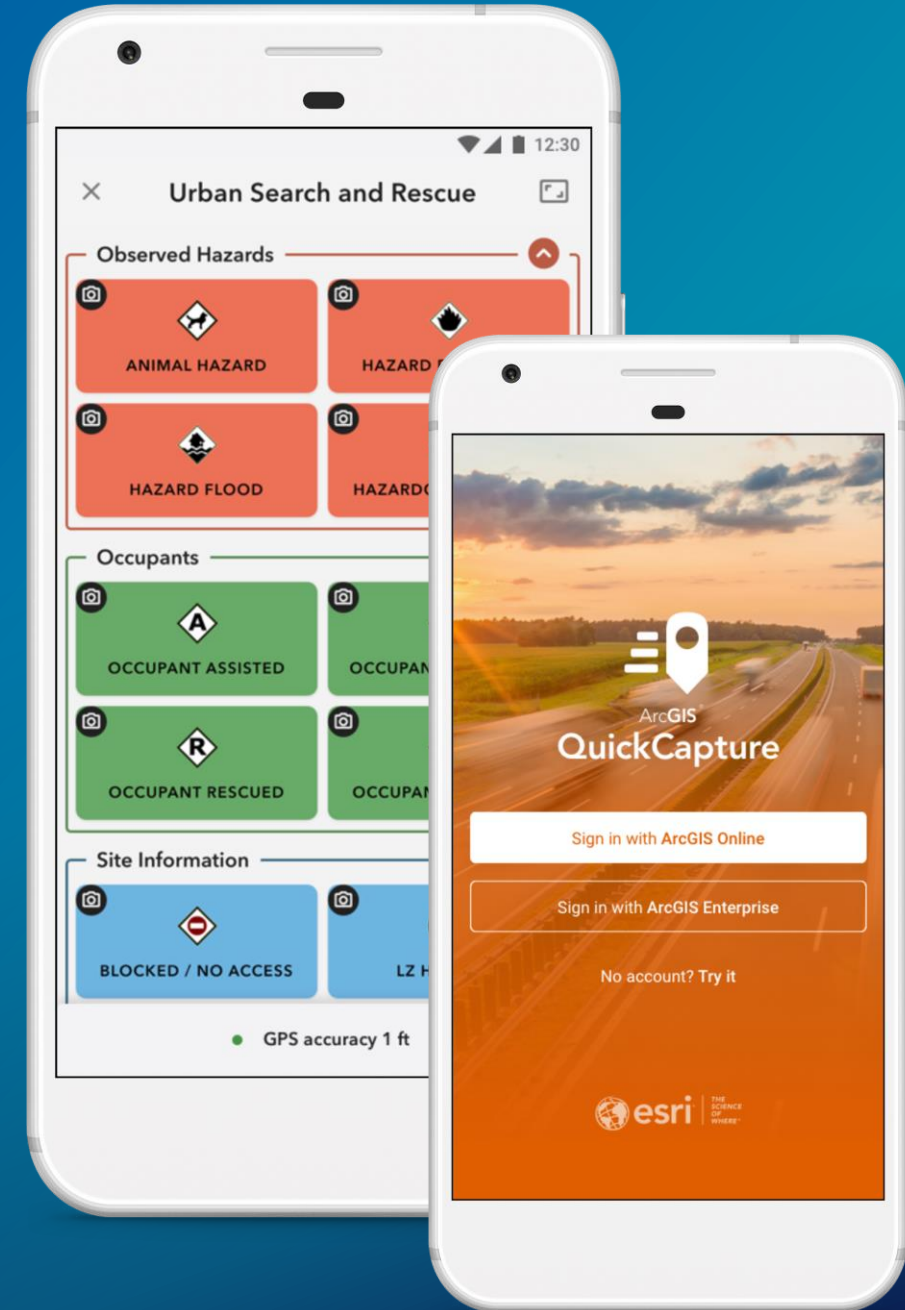
Creator
(included)



GIS Professional
(included)

Schedule

- **Proof of concept in Esri Labs**
 - To be removed from the app stores on June 25
- **Early Adopter Program open**
 - <http://bit.ly/QuickCapture>
 - Renovated mobile app UI
 - New QuickCapture Designer experience
- **General release June 25 2019**

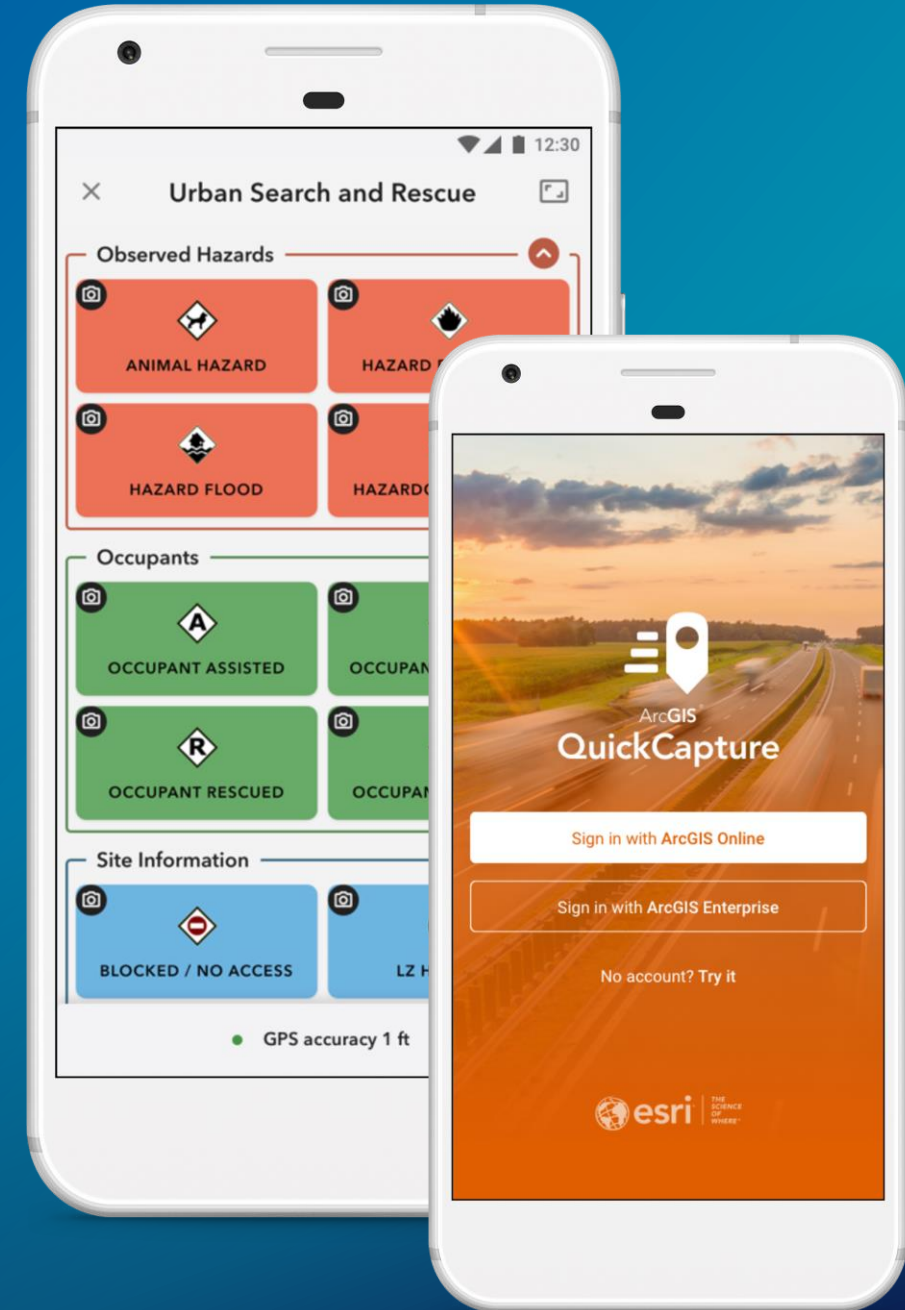


Components

The mobile app

The Rapid Data Collection app

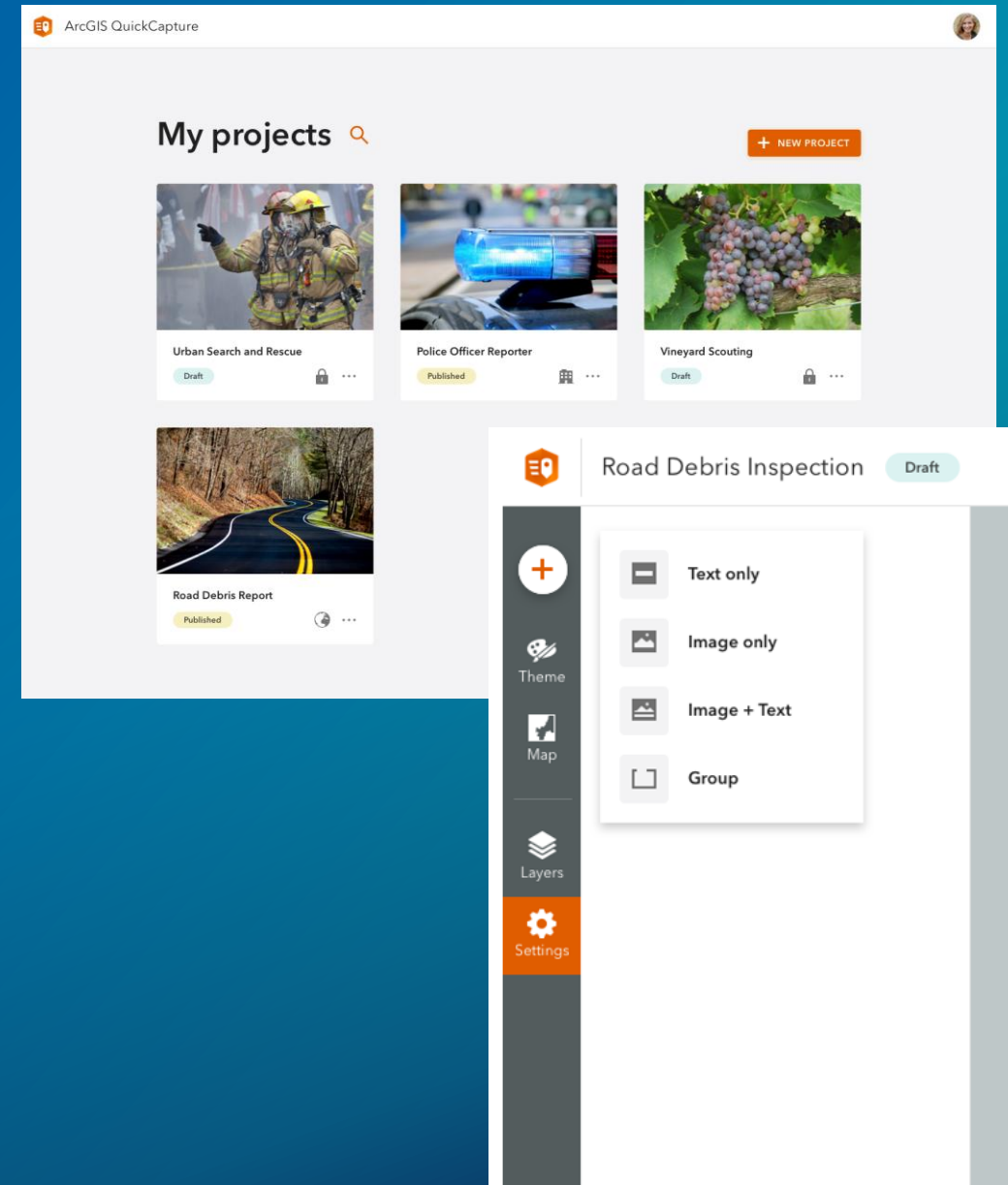
- A native app
- Built with ArcGIS Runtime and AppStudio for ArcGIS
- Android, Windows and iOS
- ArcGIS Online & Enterprise
- Online & Offline



ArcGIS QuickCapture Designer

A web tool to design ArcGIS QuickCapture projects

- quickcapture.arcgis.com
- Hosted in ArcGIS Online
- Configurable to work against ArcGIS Enterprise

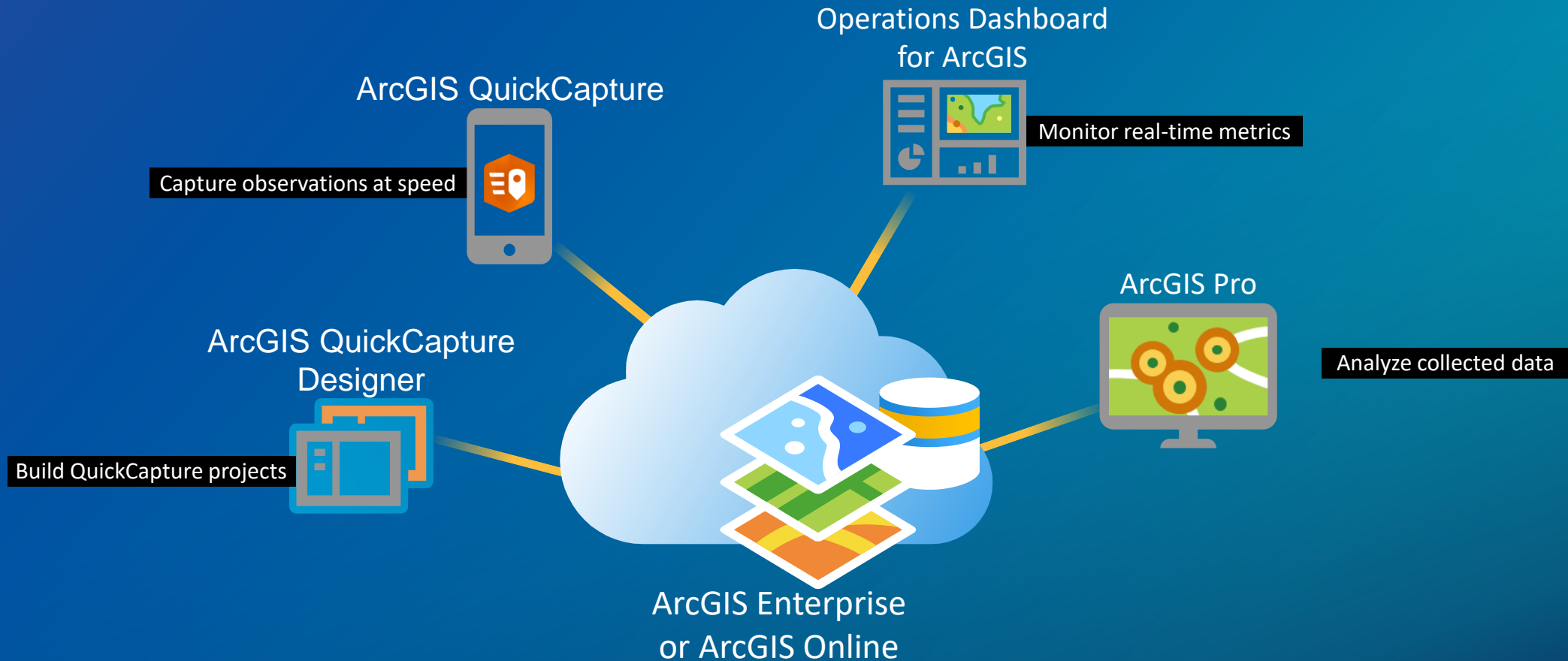


Live Demo...

Authoring QuickCapture projects

Reference Deployment

ArcGIS QuickCapture



Questions?