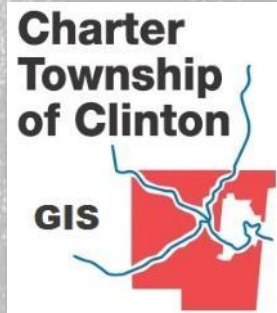
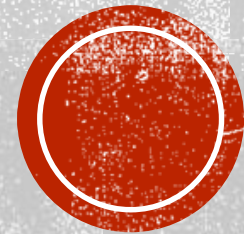


GETTING STARTED WITH OPERATIONS DASHBOARD FOR ARCGIS

Magda DiFranco
GIS Specialist
m.difranco@clintontownship-mi.gov

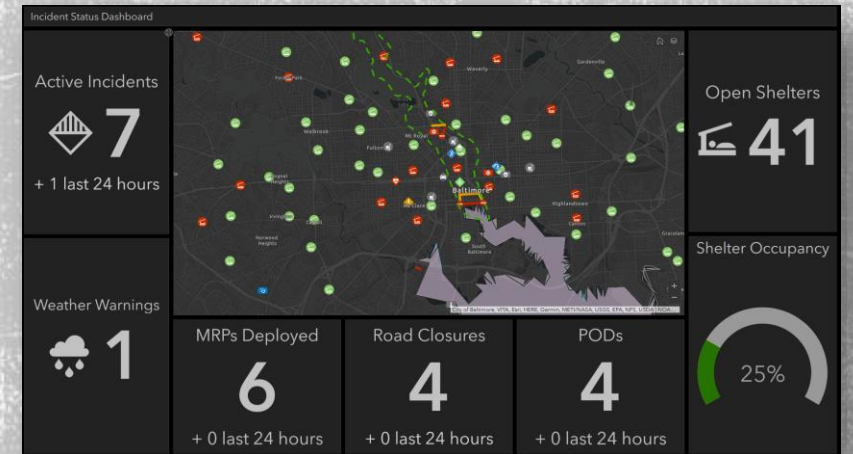


OVERVIEW

- What is it?
- When to use it?
- How to make it?
- Common elements
 - Interactivity
 - Demos
- Tips and Tricks
- Resources

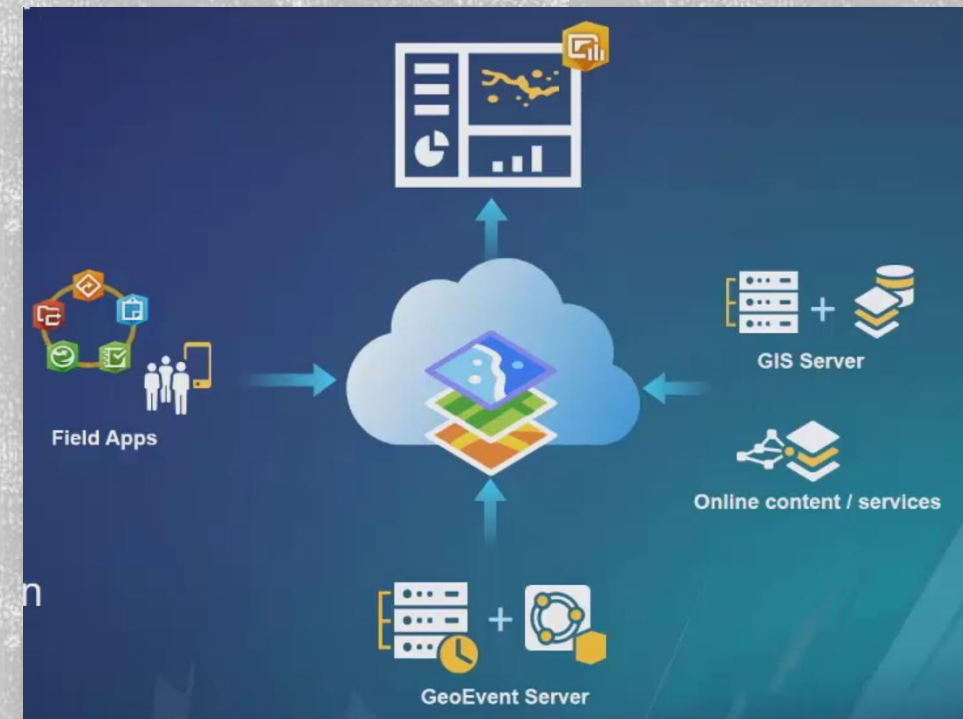


Operations Dashboard
for ArcGIS



WHAT IS IT?

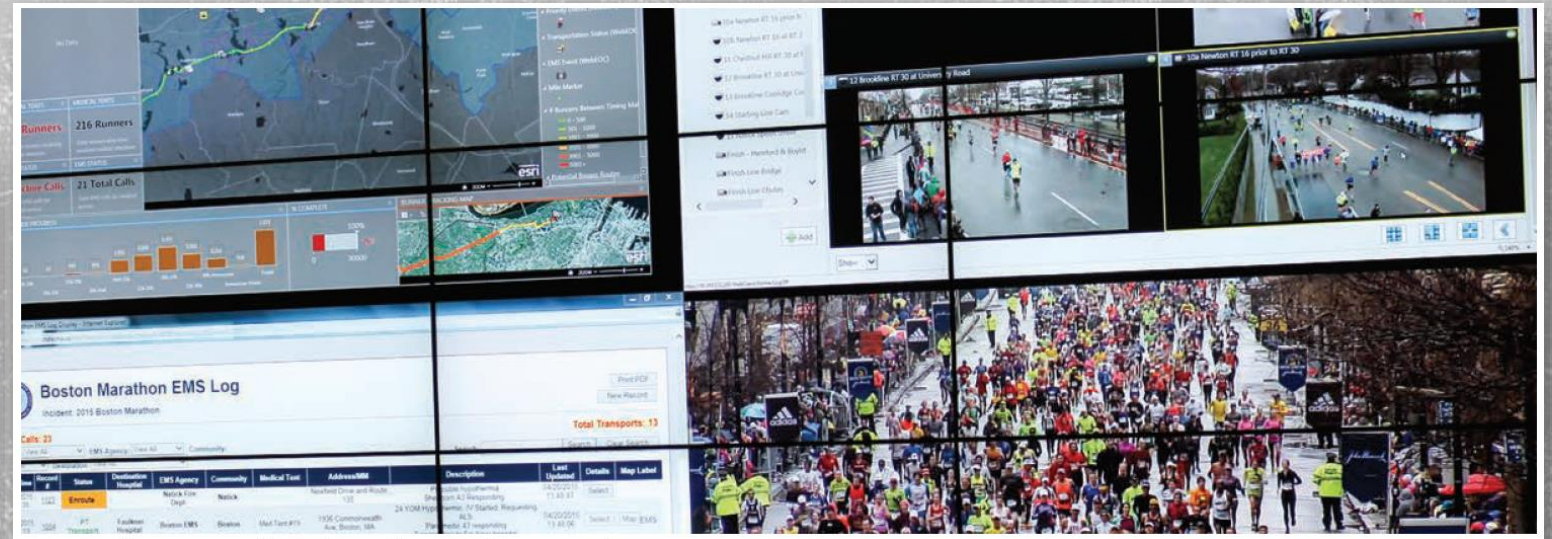
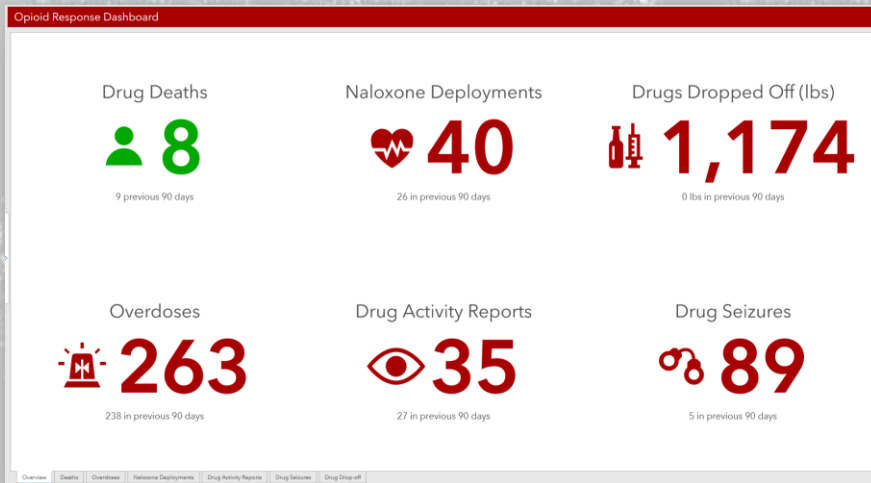
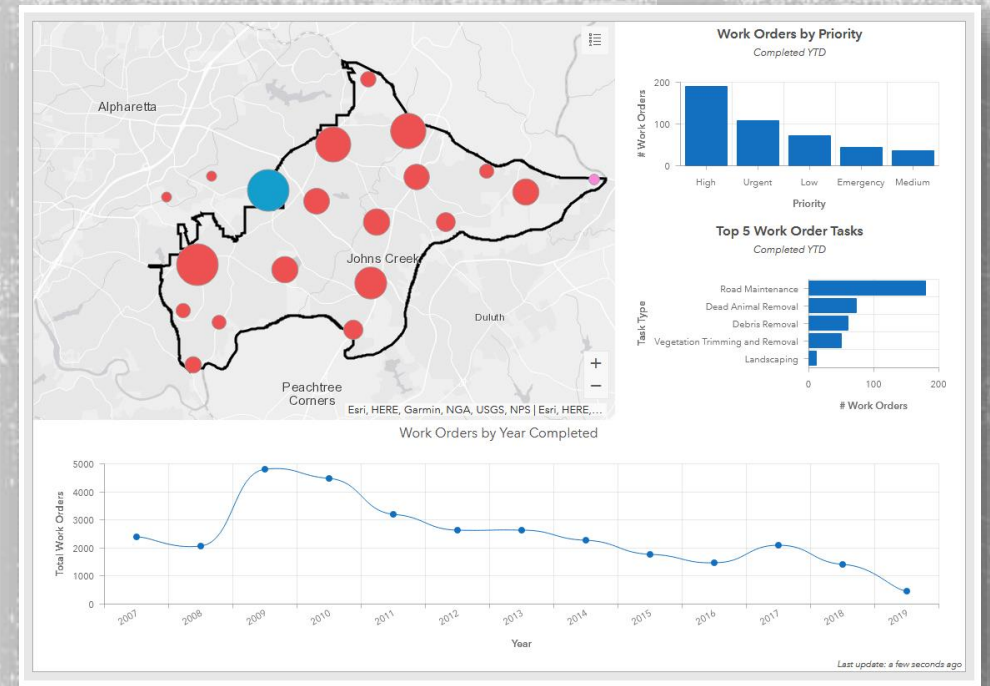
- Provides at-a-glance view to promote decision making
- Released in Dec 2017 as web browser-based App
- Tightly integrated with ArcGIS Online and Portal (10.6 or later)
- WYSIWYG user experience, no programming needed
- ArcGIS API for JavaScript
- Dashboard item type
- Ready-to-use customizable data visualizations



WHEN TO USE IT?

- **Monitor and manage operations/assets**
 - Common operational picture
- **Event Management**
 - Situational awareness, EM
- **Executive Summaries**
 - Insights, visualize and compare
 - Reporting

Interactive or Unattended display



HOW TO MAKE IT?

✓ **Author a web map**

- ✓ visible range, pop-ups, bookmarks, symbology, refresh intervals, exclude irrelevant data, etc

✓ **Create dashboard**

- ✓ 4 ways to open the app: App Launcher (Dashboard Home Page), Map Viewer, Content Page, Web Map item page

✓ **Add and configure elements**

- ✓ Maps, lists, gauges, indicators, charts, etc

✓ **Set layout**

- ✓ Drag, group (hold Shift), stack and resize; dark or light theme; customize colors

✓ **Add interactivity**

- ✓ Actions and Selectors

✓ **Test**











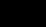

- ✓ Display, interactivity, look and feel

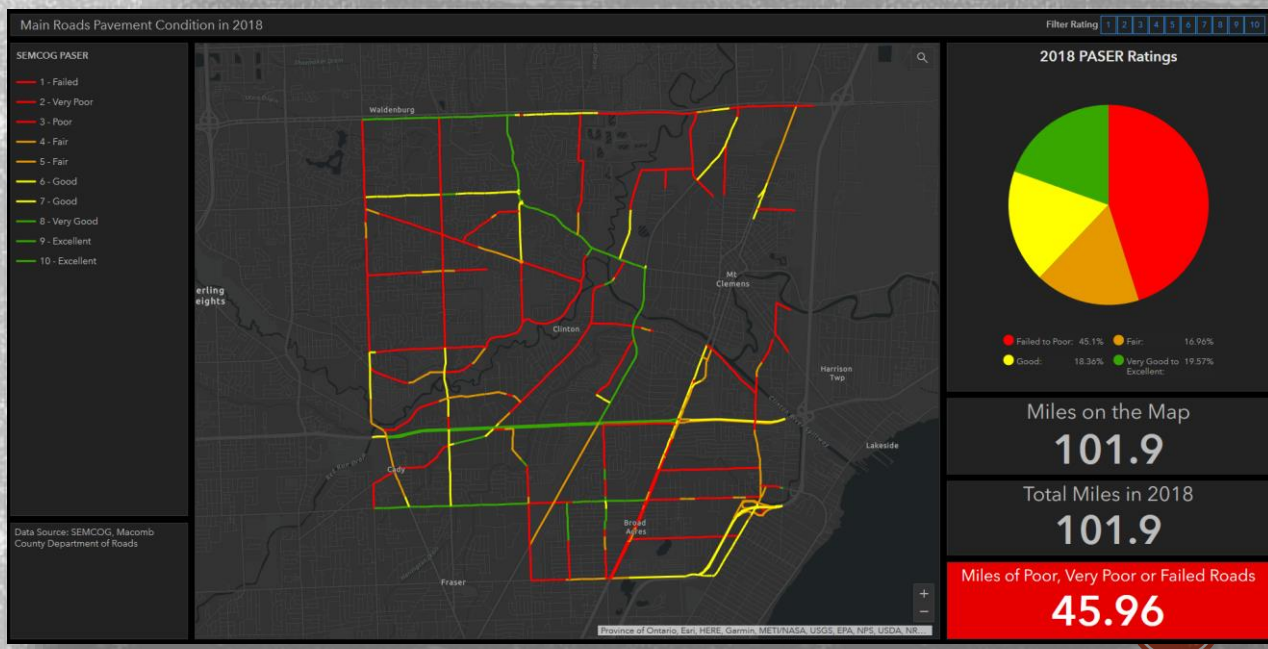
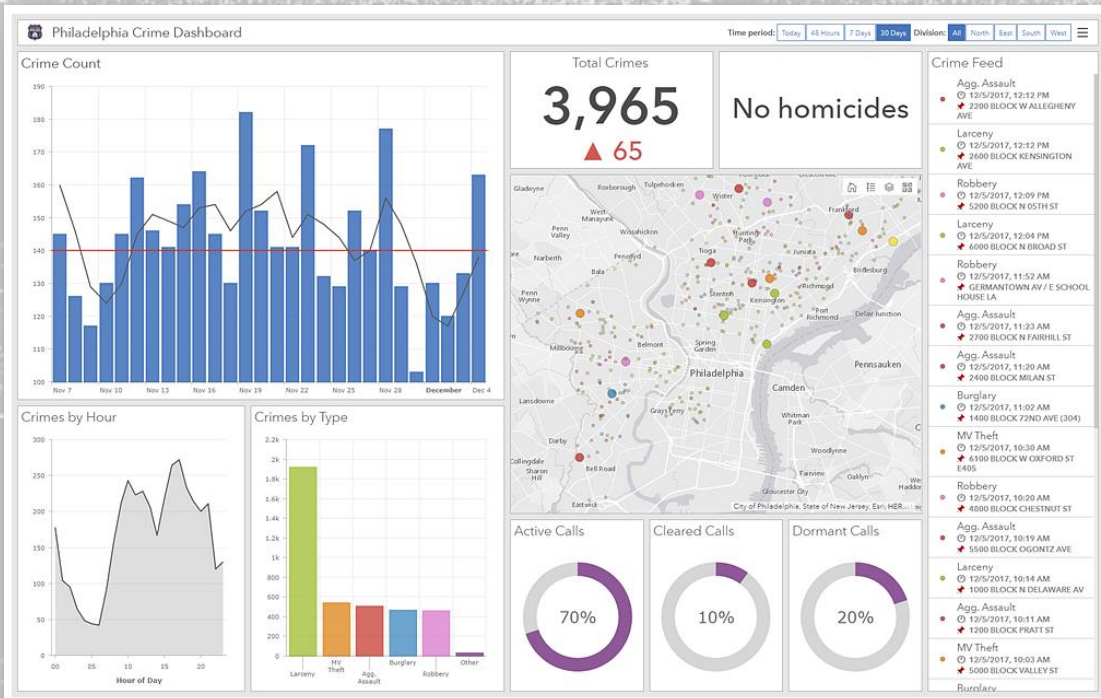
✓ **Share**

- ✓ Private, Groups, Organization, Public



DASHBOARD ELEMENTS

-  Header
-  Side Panel
-  Map
-  Map Legend
-  Serial Chart
-  Pie Chart
-  Indicator
-  Gauge
-  List
-  Details
-  Rich Text
-  Embedded Content



INTERACTIVITY

- Elements can be linked with one another
- **Action**
 - interact with source element to trigger response in target element
 - Filter, flash, pan, zoom, spatial extent



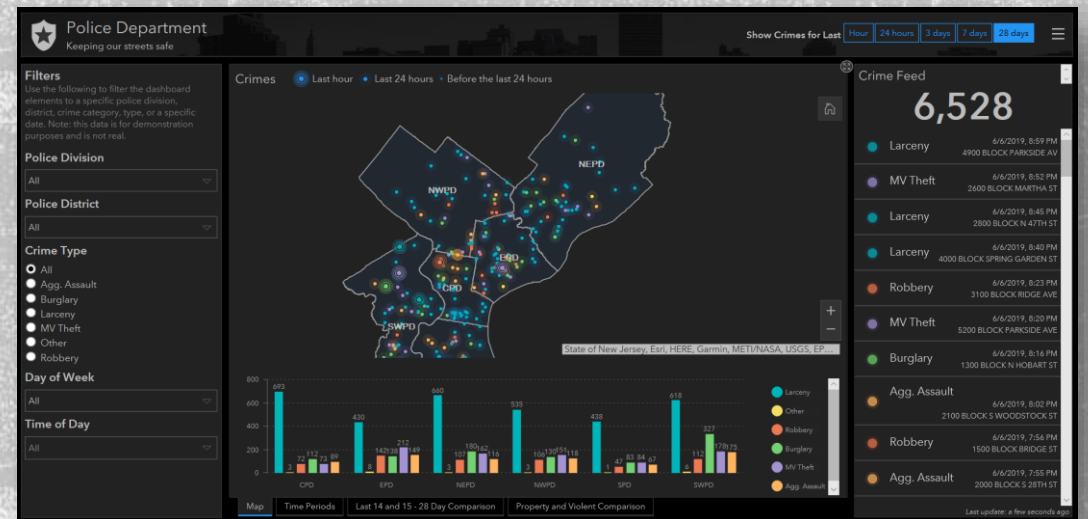
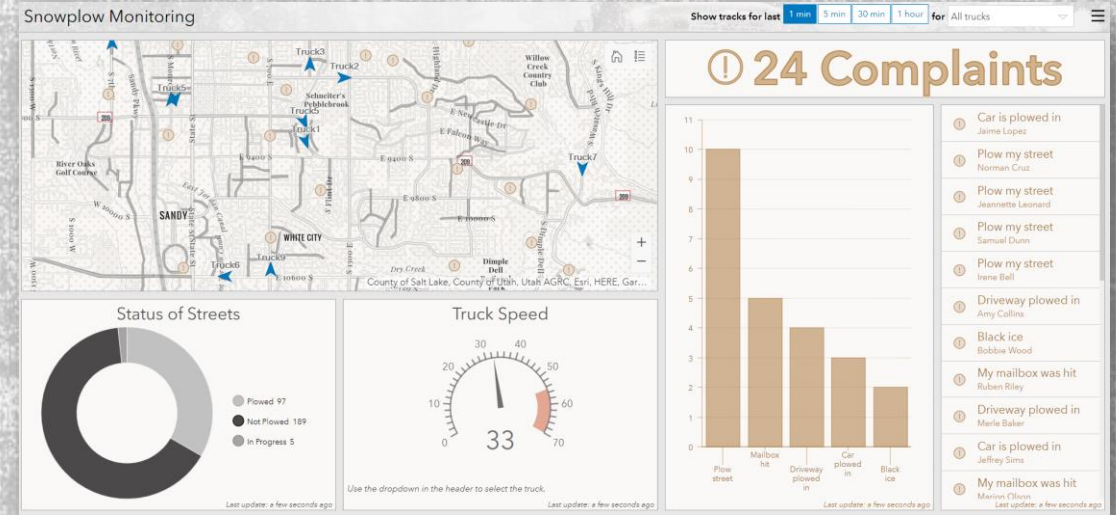
- **Selector**
 - User interface control on the Header or Left Panel triggers an action
 - Category, numeric or date

Water Main Breaks 2009 2010 2011 2012 2013 2014 2015 2016 2017 2018 2019

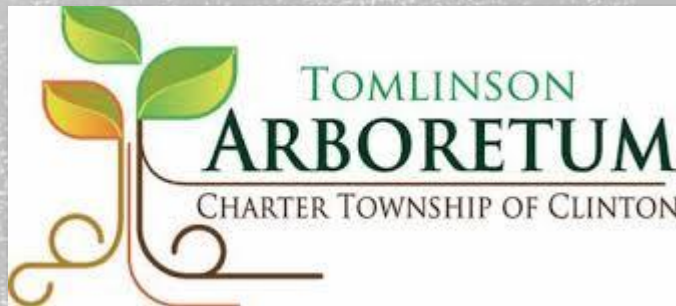


COOL EXAMPLES

- [Jurassic Park Dashboard](#)
- [Flood Gauge Monitoring](#)
- [Maryland Department of Transportation Road Projects Dashboard](#)
- [Philadelphia Crime Dashboard](#)
- [Snowplow Monitoring](#)
- [Recent USGS Earthquakes](#)
- [Baltimore Incident Status Dashboard](#)
- [Election Results Dashboard](#)



NOW YOU KNOW THE BASICS SO LET'S MAKE A DASHBOARD



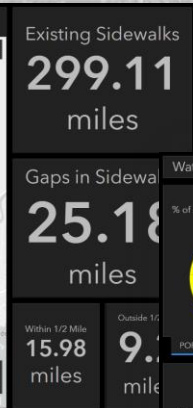
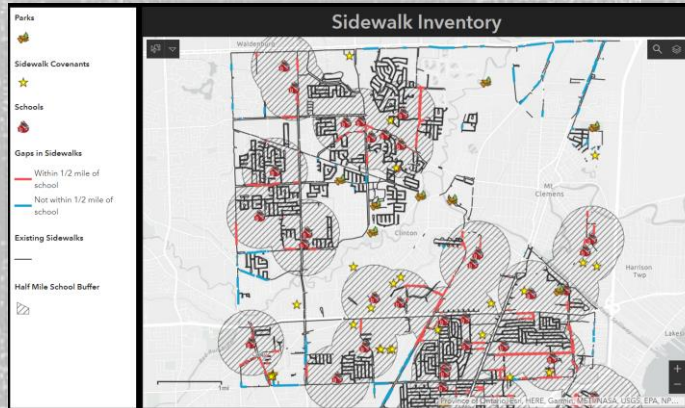
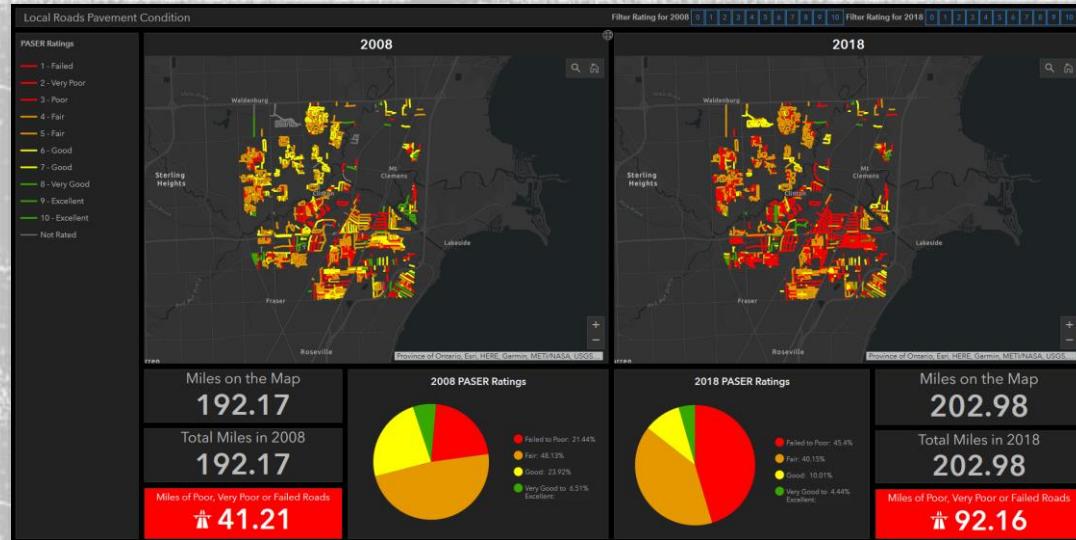
TIPS AND TRICKS

- Take time designing your web map
- Take time customizing your dashboard elements – names, titles, colors, formatting, etc
- Think about your audience, the purpose of the dashboard as well as data sources
- Build specific, focused dashboards: less is more
- Can be designed for mobile but primary focus is desktop and tablets
- Save, save, save and test, test, test



CT DASHBOARDS

- Roads
- Water Asset Management
- Hydrant Inspections
- Water Valve Assessment
- Sidewalk Inventory



RESOURCES

- Product Overview <https://www.esri.com/en-us/arcgis/products/operations-dashboard/overview>
- Help Documents <https://doc.arcgis.com/en/operations-dashboard/>
- Operations Dashboard for ArcGIS: An Introduction (ESRI User Conference 2018 Technical Workshop)
<https://www.esri.com/training/catalog/5bcf696118e35b787fb177f1/operations-dashboard-for-arcgis%3A-an-introduction/>
- Real-Time Decision Making with Operations Dashboard for ArcGIS
<https://www.esri.com/training/catalog/5a2f2af490f2fd5a2e37a7cb/real-time-decision-making-with-operations-dashboard-for-arcgis/>
- Provide Context to Your Dashboard Indicators (Blog Post) <https://www.esri.com/arcgis-blog/products/ops-dashboard/mapping/provide-context-to-indicators/>
- ArcGIS Solutions Gallery Operations Dashboard for ArcGIS
<http://solutions.arcgis.com/gallery/#s=0&md=products-or-applications:Operations%20Dashboard%20for%20ArcGIS>



THANK YOU

Magda DiFranco

GIS Specialist

m.difranco@clintontownship-mi.gov

586-723-8073

