



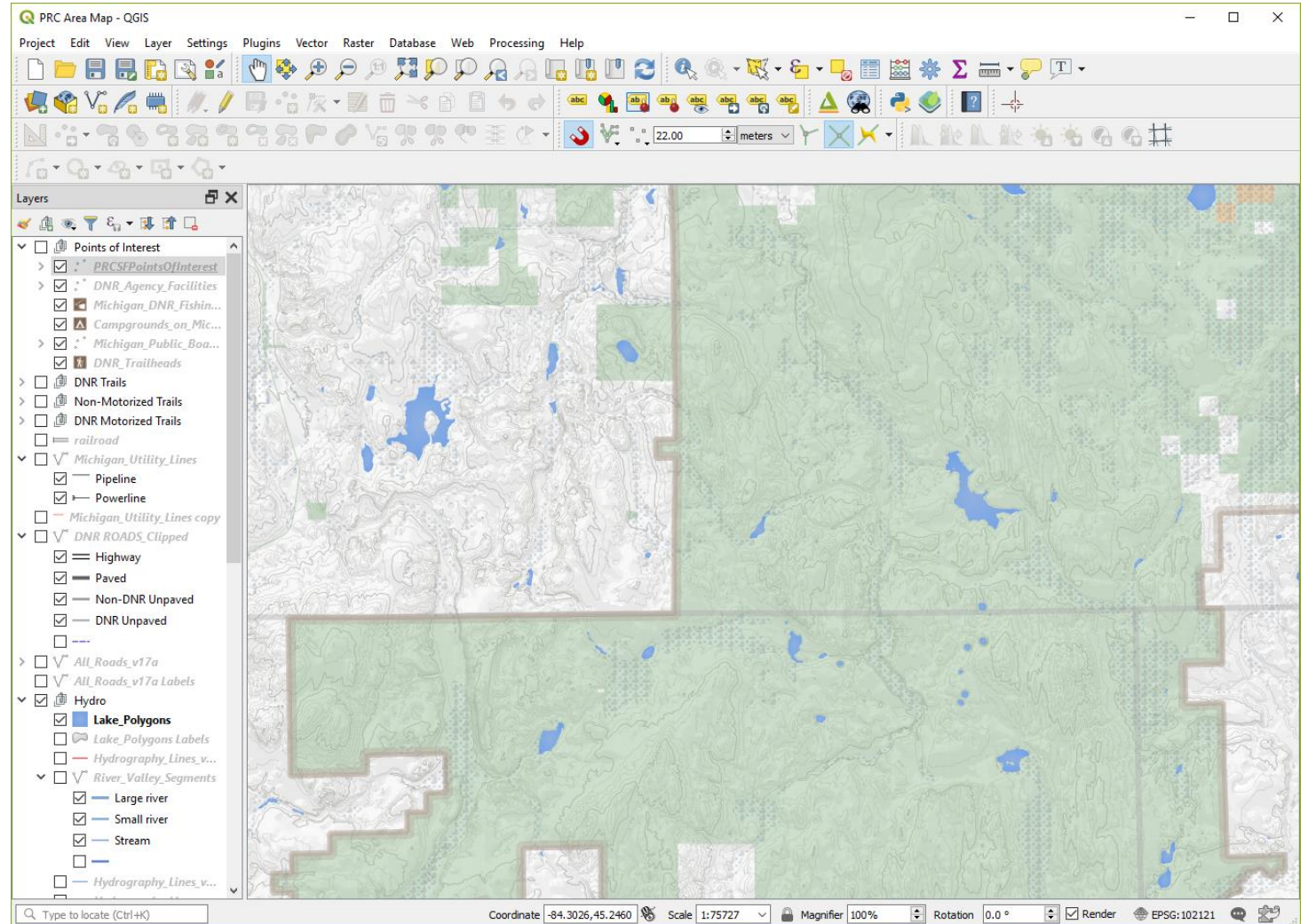
Field Data Collection on a Budget with QField and QGIS

Jessica Kane / IMAGIN Conference 2019



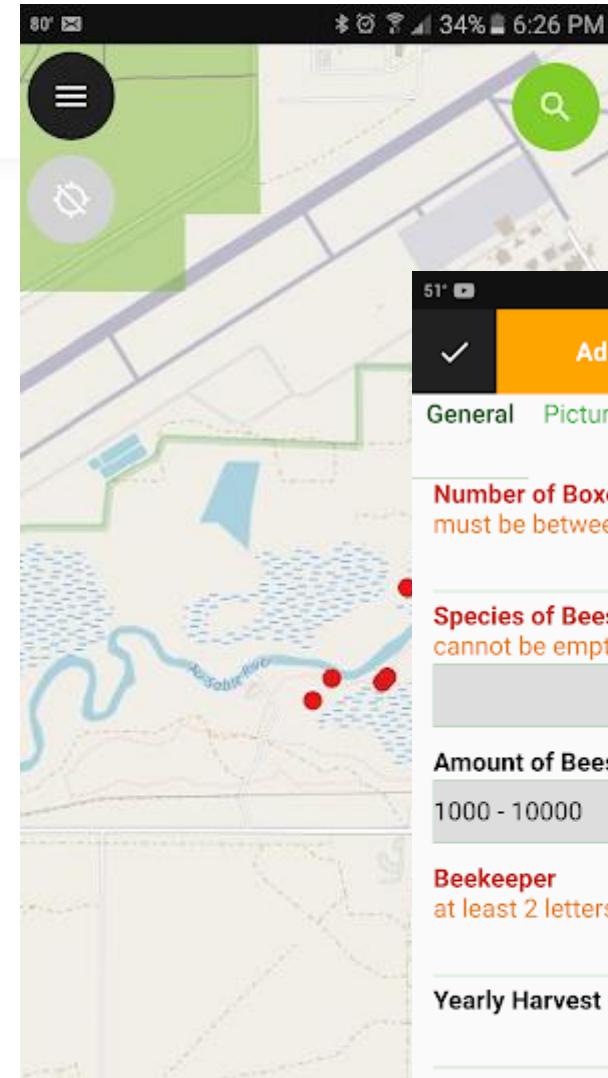
QGIS

- Open source desktop GIS
- Free to use, modify and redistribute.
- View and edit vector and raster data in a variety of file formats and databases
- Tools include geoprocessing functions, spatial analyses, styling/cartography
- PyQGIS allows for scripting of geospatial processes
- Works with other open source tools and plugins

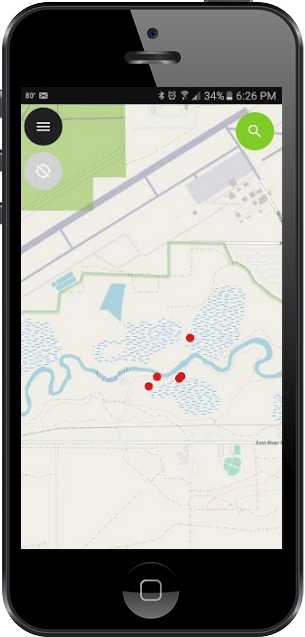
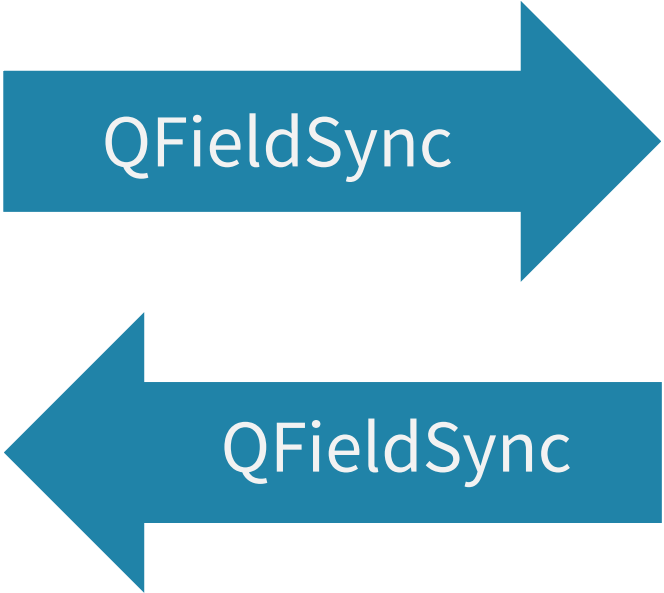
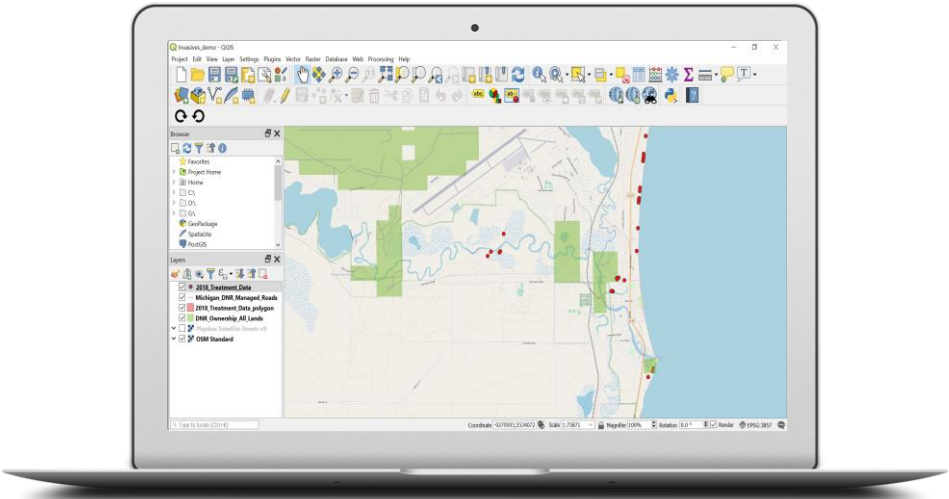


QField

- Open source mobile (Android) application
- Allows you to edit QGIS projects on a mobile device.
- V1.0 released March 2019
- QGIS project (including symbology) looks exactly the same in QField
- Supports most of the formats that QGIS supports including shapefiles and PostGIS databases
- Works fully when offline
- Feature digitizing, geometry and attributes editing, attribute search, forms customizable through QGIS, GPS support, and camera integration
- Create and edit points, lines and polygons
- Package QGIS projects with QFieldSync



Demonstration Workflow



Demonstration



Items to Note

Concurrent Editing



Using the demonstrated workflow, a user in the office can make changes to the data in the QGIS project that persist when new data is uploaded from a user in the field. Multiple people can gather data points in the field and then sync; however, there is no conflict resolution for the same feature updated by two field workers at the same time.

Online Editing



If you store your data in a centralized database on a server accessible through an internet connection, multiple people can be editing data in the field and seeing edits in real time (as long as they have connectivity).

A hybrid mode and cloud synchronization functionality are planned for the future.

Accuracy



QField can be used with just a cellphone's GPS or with an external high accuracy GNSS receiver. QField listens to the Android location services so it will use whatever the Android operating system is delivering to it. It can take advantage of the best location provided by external devices.

Pros



Powerful forms



Full editing of points/lines/polygons and attributes

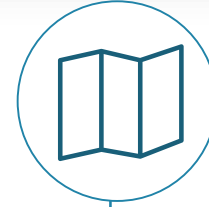


Web map generation through QGIS



Active community support

Cons



Learning curve for customizing forms in QGIS



More involved set-up to create real-time data editing/viewing workflow



Web maps generated through QGIS may require tweaking



Relatively new project with young documentation

Jessica Kane



<https://www.line-45.com/labs/QGIS-QField.pdf>



(833) 254-6345



jkane@line-45.com