



Enterprise GIS with QGIS & PostGIS

Jessica Kane | IMAGIN Conference 2022



Agenda

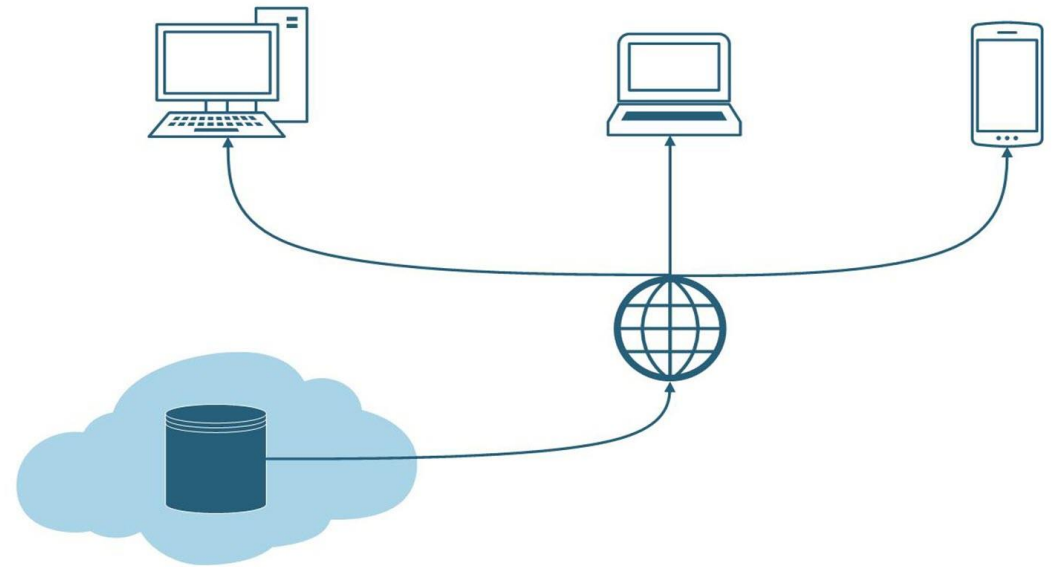
1. What is Enterprise GIS?
2. GIS&T BoK – Capabilities
3. Foundation: QGIS & PostGIS
4. Demonstration
5. Other Tools
6. Resources



What is Enterprise GIS?

Enterprise GIS

- GIS for an organization (not just one person)
- A system for managing geospatial data long-term (not just a single project)



Functional Capabilities of Enterprise GIS

- **Centralized Storage of Geospatial Data**
- **Securing Sharing and Dissemination of geospatial data, maps, apps and tools**
- System Integration
- Web GIS / Internet GIS Capability
- Democratization
- Consolidation of the Enterprise GIS Function within the Organization



[From the GIS&T Body of Knowledge](#)

Overview

The logo for QGIS, featuring the letters 'QGIS' in a bold, green, sans-serif font. The 'Q' is stylized with a white outline and a small orange and green square at its top-right corner.A blue, five-pointed starburst shape containing the text '20 yrs old!' in white, sans-serif font.

20 yrs
old!

- Open source desktop GIS
- View and edit vector and raster data in a variety of file formats and databases
- Tools include geoprocessing functions, spatial analyses, styling/cartography
- PyQGIS allows for scripting of geospatial processes
- Works with other open source tools and plugins

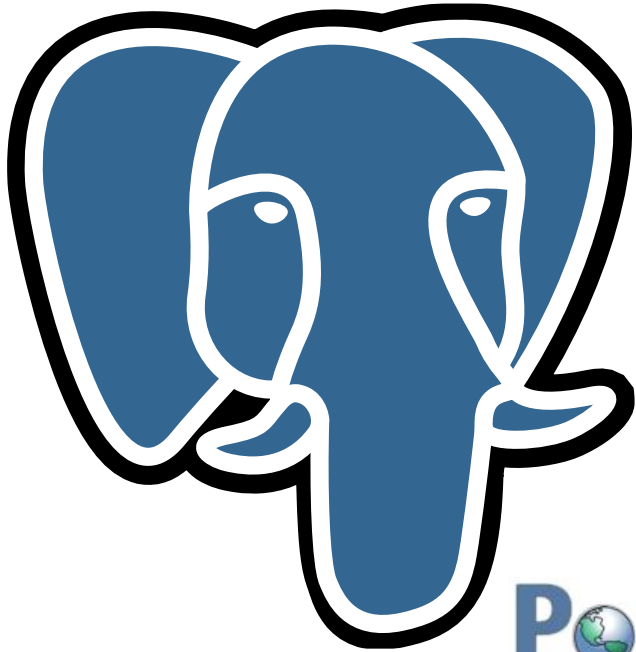
The logo for PostGIS, featuring the letters 'PostGIS' in a bold, blue, sans-serif font. The 'o' is replaced by a small globe icon.A blue, five-pointed starburst shape containing the text '21 yrs old!' in white, sans-serif font.

21 yrs
old!



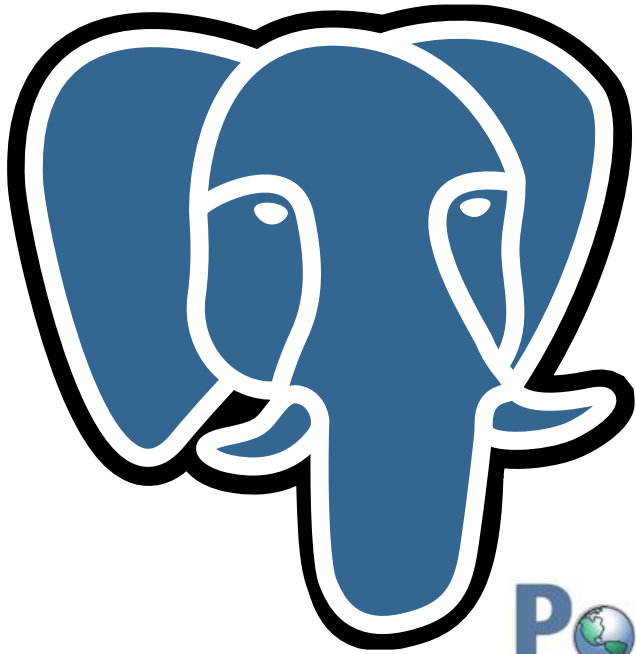
- Spatial extension for PostgreSQL, an open source relational database system
- Supports location queries in SQL (buffer, intersects, etc)
- Supports vector & raster data
- Number of features makes PostgreSQL the most fully-featured spatial database
 - 3D objects, spatial temporal, network topology, vector tiles
 - ArcGIS Enterprise Data Store built on PostgreSQL

Centralized Storage of Geospatial Data



- Easy to organize/maintain
- Multi-user, concurrent access
- System of record
- Track edit history
- Spatial analysis
- Spatial indexing
- Trigger functions
- Store rasters
- Integrates seamlessly with QGIS

Securing Sharing and Dissemination



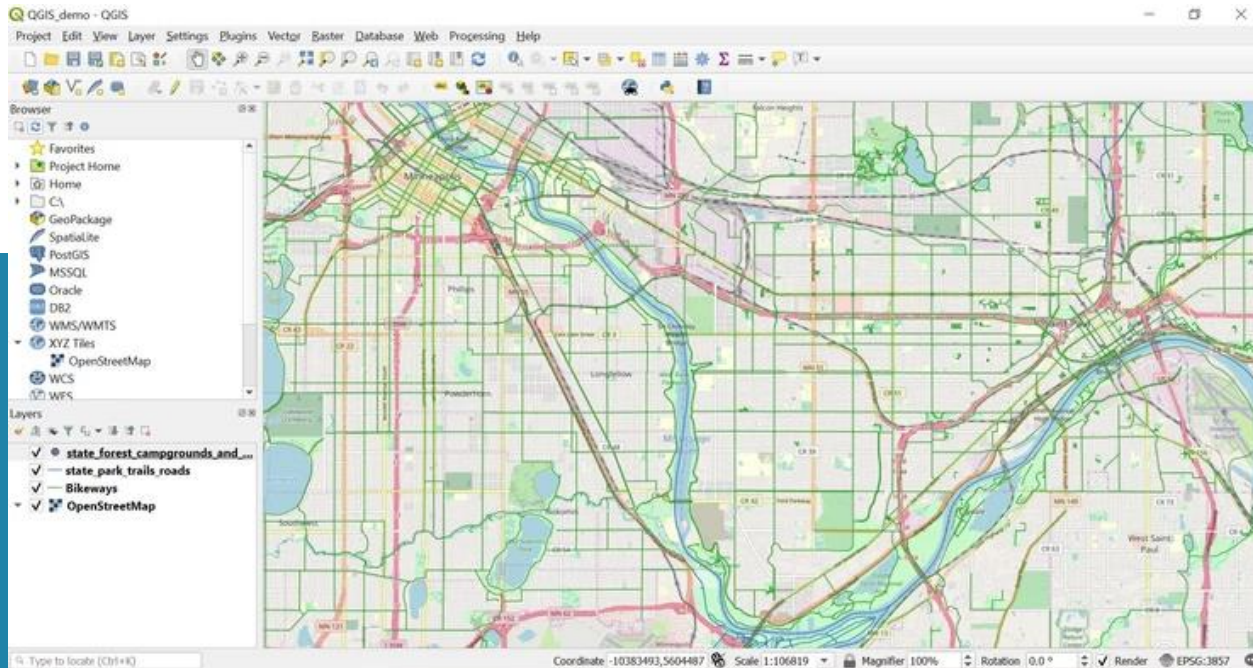
- Permissions & security
- User roles and groups
- Schema, row & feature level security
- Single sign-on
- SQL constraints
- Versioning
- Data back-ups
- Point in time recovery

Sharing and Dissemination



- View/edit layers: permissions controlled by PostgreSQL
- Save QGIS styles & projects in PostGIS
- Soft deletions

- Form data input
- Mobile: QField, Input
- Offline projects
- DB Manager
 - Import layers to PostGIS
 - Edit schema
 - SQL Query Builder: view results on the map



Demonstration



Functional Capabilities of Enterprise GIS

- Centralized Storage of Geospatial Data
- Securing Sharing and Dissemination of geospatial data, maps, apps and tools
- **System Integration**
- Web GIS / Internet GIS Capability
- Democratization
- Consolidation of the Enterprise GIS Function within the Organization

QGIS Consumes Web Services



Open
Geospatial
Consortium



ArcGIS

Publish Web Services

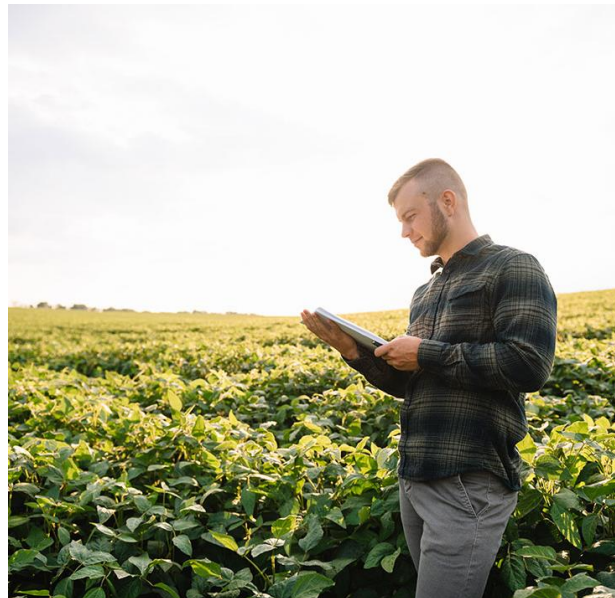
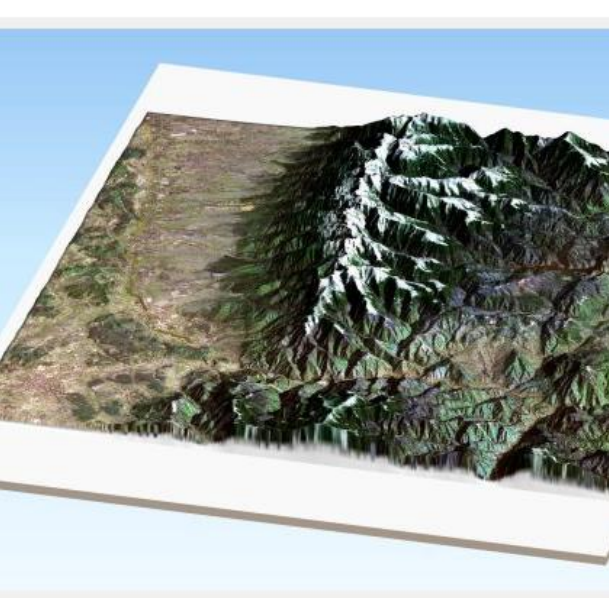
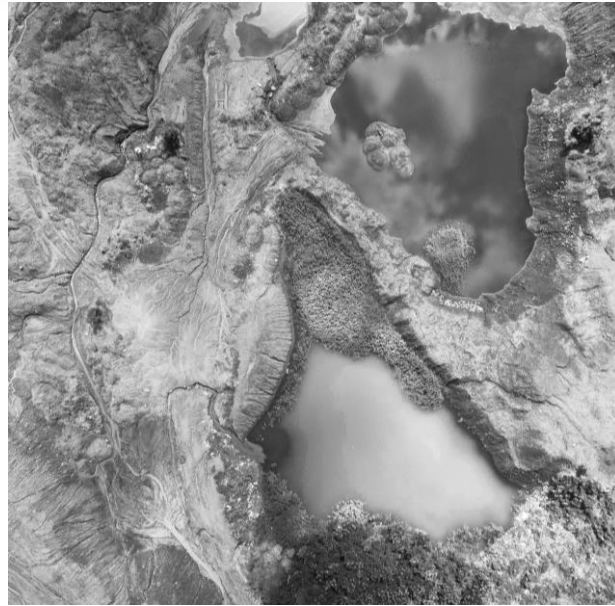
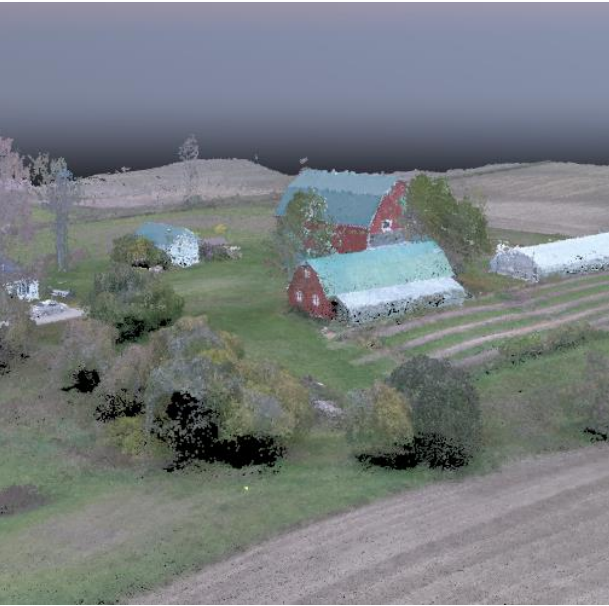


QGIS Server



GeoServer

Plugins & Integrations



- Open source: easy to build upon
- QGIS plugin ecosystem
- Easily view free and proprietary data in QGIS: HERE, Google Street View, Planet, OpenStreetMap

Functional Capabilities of Enterprise GIS



- Centralized Storage of Geospatial Data
- Securing Sharing and Dissemination of geospatial data, maps, apps and tools
- System Integration
- **Web GIS / Internet GIS Capability**
- Democratization
- Consolidation of the Enterprise GIS Function within the Organization

[From the GIS&T Body of Knowledge](#)

QGIS Plugins

- qgis2Web, qgis2threejs 
- GIS Cloud Publisher 
- QGIS Cloud 

JavaScript Mapping Libraries



Functional Capabilities of Enterprise GIS

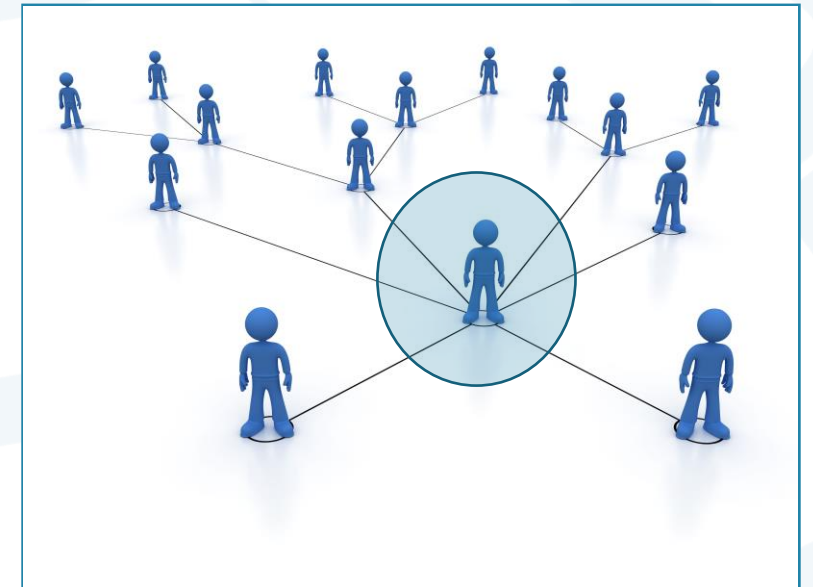
- Centralized Storage of Geospatial Data
- Securing Sharing and Dissemination of geospatial data, maps, apps and tools
- System Integration
- Web GIS / Internet GIS Capability
- **Democratization**
- Consolidation of the Enterprise GIS Function within the Organization



[From the GIS&T Body of Knowledge](#)

Functional Capabilities of Enterprise GIS

- Centralized Storage of Geospatial Data
- Securing Sharing and Dissemination of geospatial data, maps, apps and tools
- System Integration
- Web GIS / Internet GIS Capability
- Democratization
- **Consolidation of the Enterprise GIS Function within the Organization**



[From the GIS&T Body of Knowledge](#)

Resources

Articles:

- [Benefits of Using a Database to Manage Spatial Data](#)
- [Using QGIS with PostGIS: A Dynamic Duo](#)
- [Using QGIS and QField for Field Data Collection](#)

Tutorials:

- [Introduction to PostGIS](#)
- [QGIS Training Manual](#)



Jessica Kane



<https://www.line-45.com/blog>



(833) 254-6345



jkane@line-45.com

Email me to be added to this email list:
Michigan Open Source Geospatial Tech