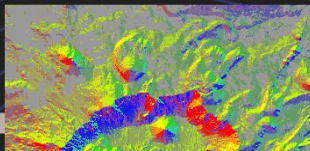
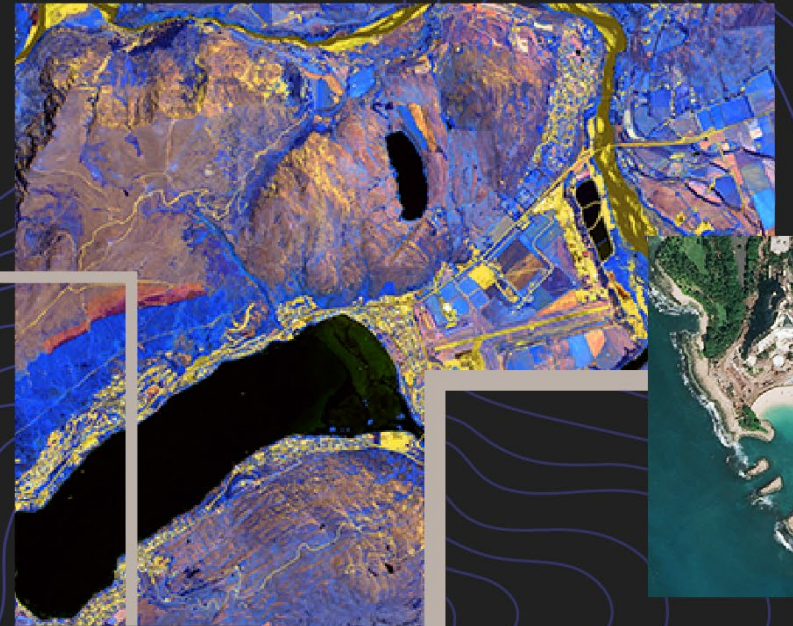
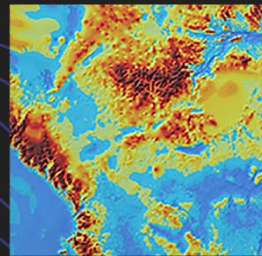
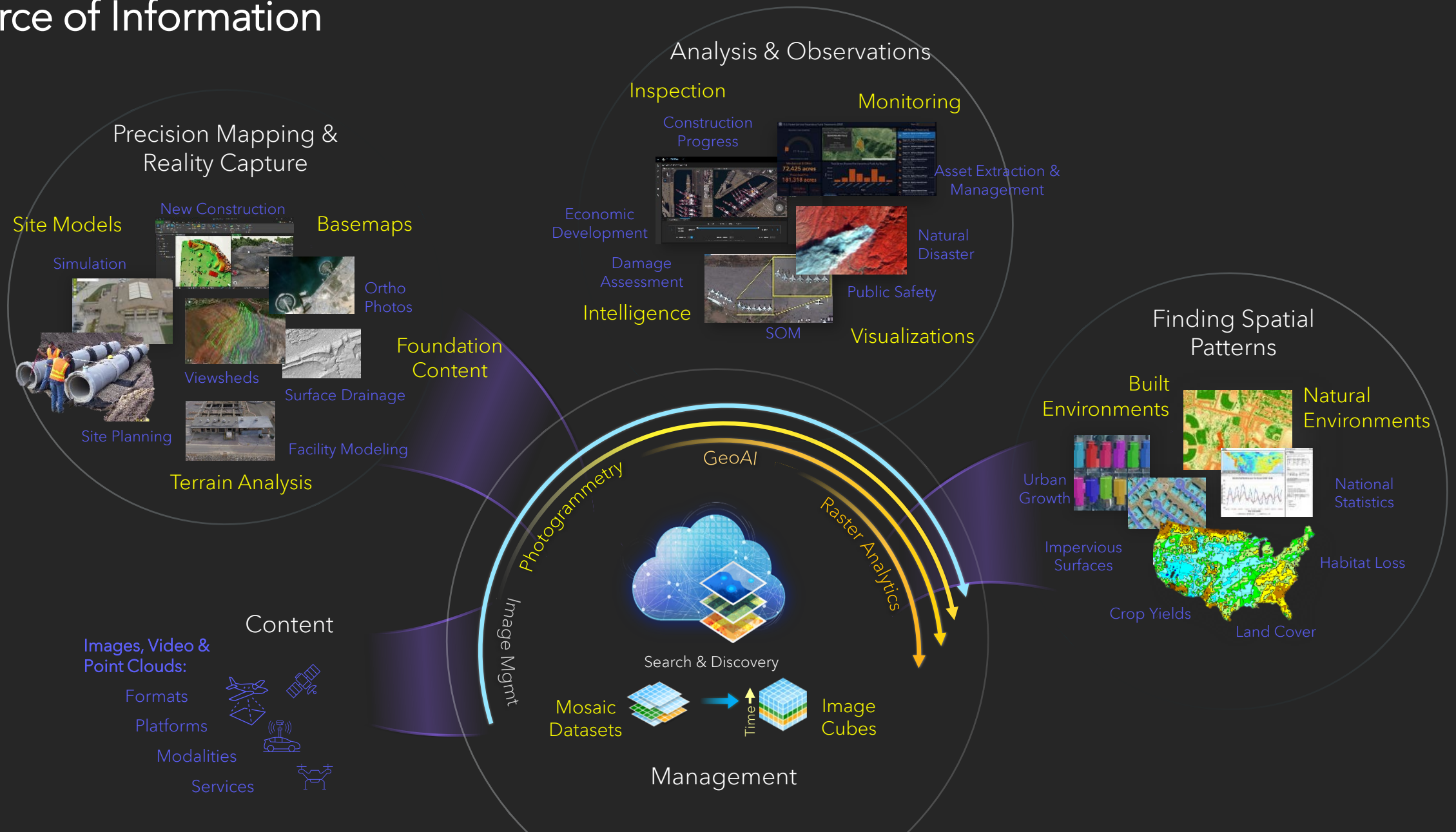


# Imagery Workflows in ArcGIS Online

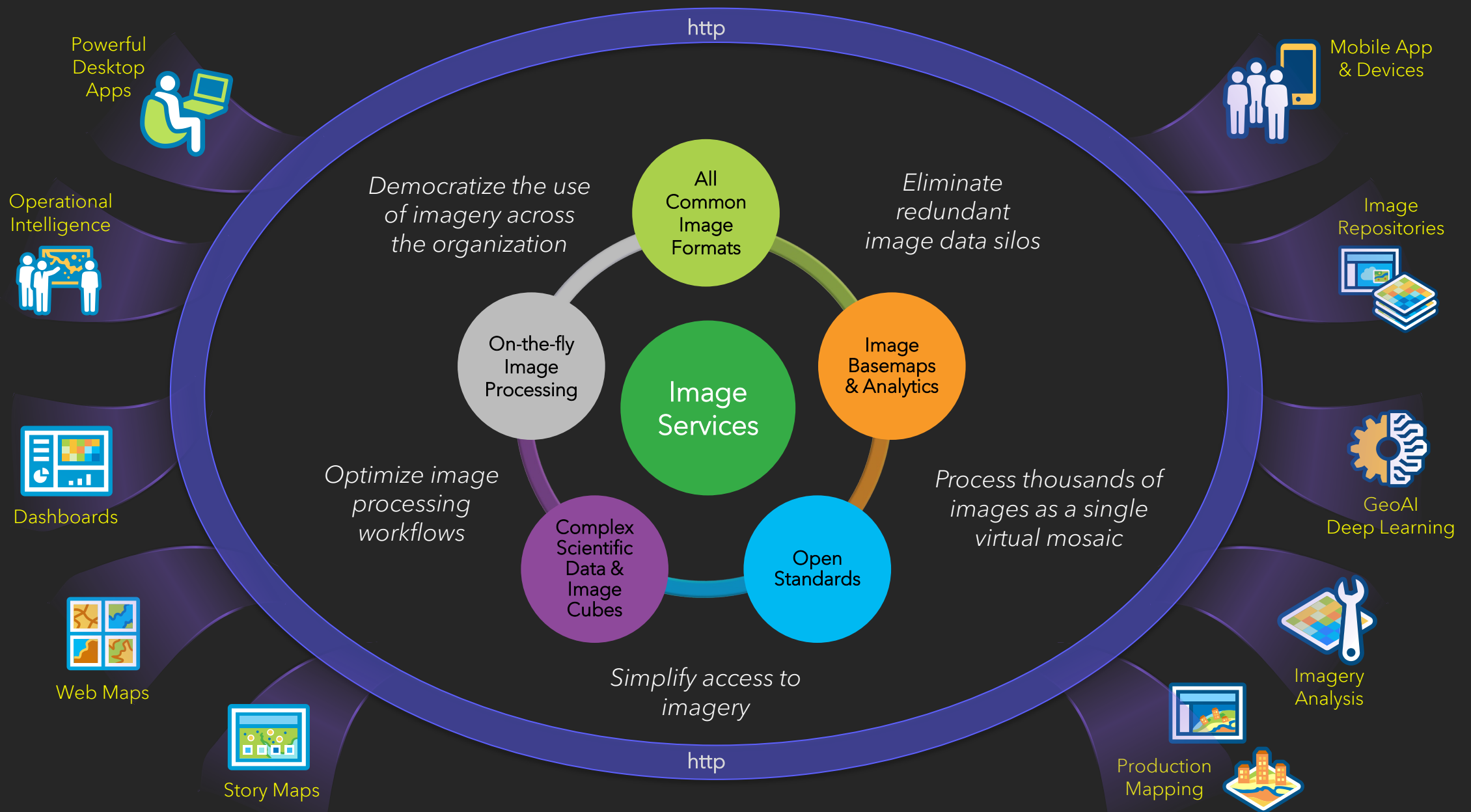
Matt Robinson, Solution Engineer, Esri

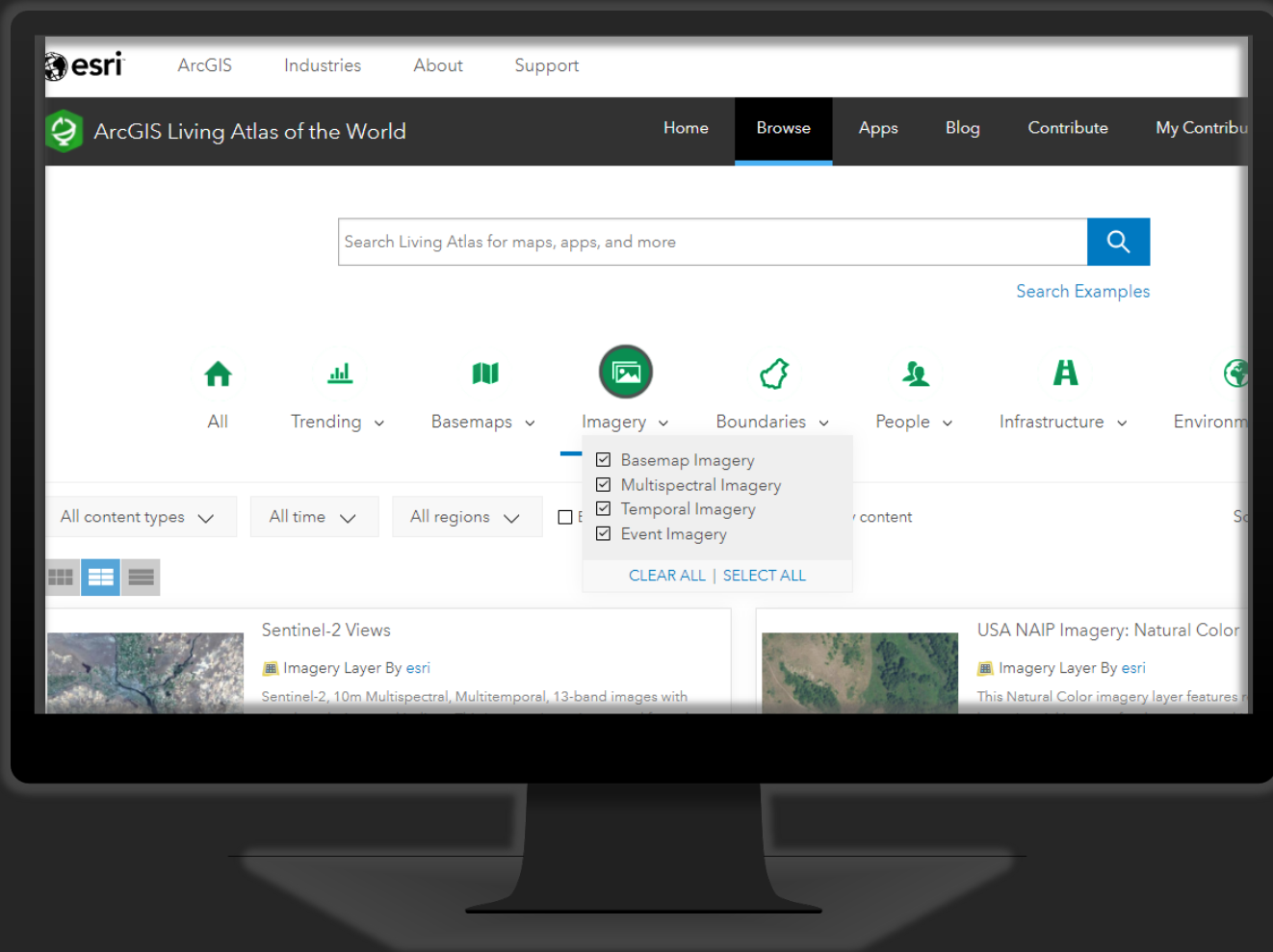


# Imagery is a Foundational Source of Information



# Image Services Empower the Use of Imagery





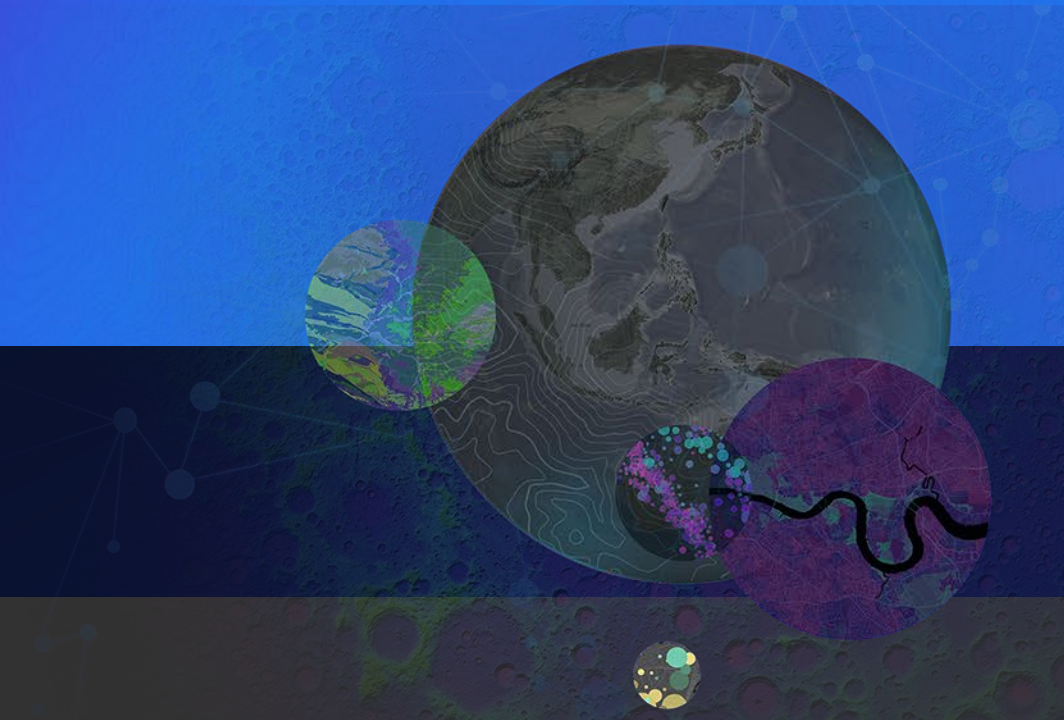
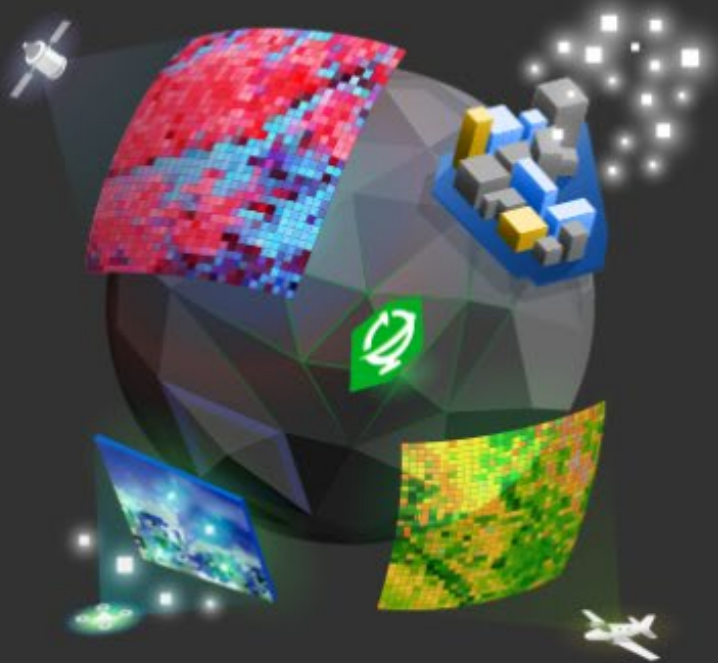
# ArcGIS Living Atlas of the World

# Imagery Content

Access our vast imagery collection or your own

## Access ready-to-use imagery

Ready-to-use, authoritative data layers are available to advance your understanding. Our curated imagery collection is made available via ArcGIS Living Atlas of the World. This collection includes performant high-resolution basemap imagery, as well as categorical, multidimensional, and elevation data services for visualization and analysis.



# Imagery Content

Access our vast imagery collection or your own

## ArcGIS Living Atlas of the World

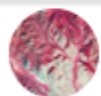
Discover content that supports your work. ArcGIS Living Atlas of the World is the foremost collection of geographic information from around the globe. It includes maps, apps, and ready-to-use data layers and deep learning models.



World Imagery



Landsat



NAIP



HYCOM



World terrain



Sentinel-2



Arctic imagery



MODIS imagery



### World Imagery

Access one-meter or better aerial and satellite imagery of the world with political boundaries and place-names. Also, go back in time with our Wayback app, which enables users to access more than 100 different versions of archived world imagery.

[Explore World Imagery](#)

# Imagery Content

Access our vast imagery collection or your own

## ArcGIS Living Atlas of the World

Discover content that supports your work. ArcGIS Living Atlas of the World is the foremost collection of geographic information from around the globe. It includes maps, apps, and ready-to-use data layers and deep learning models.



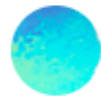
World Imagery



Landsat



NAIP



HYCOM



World terrain



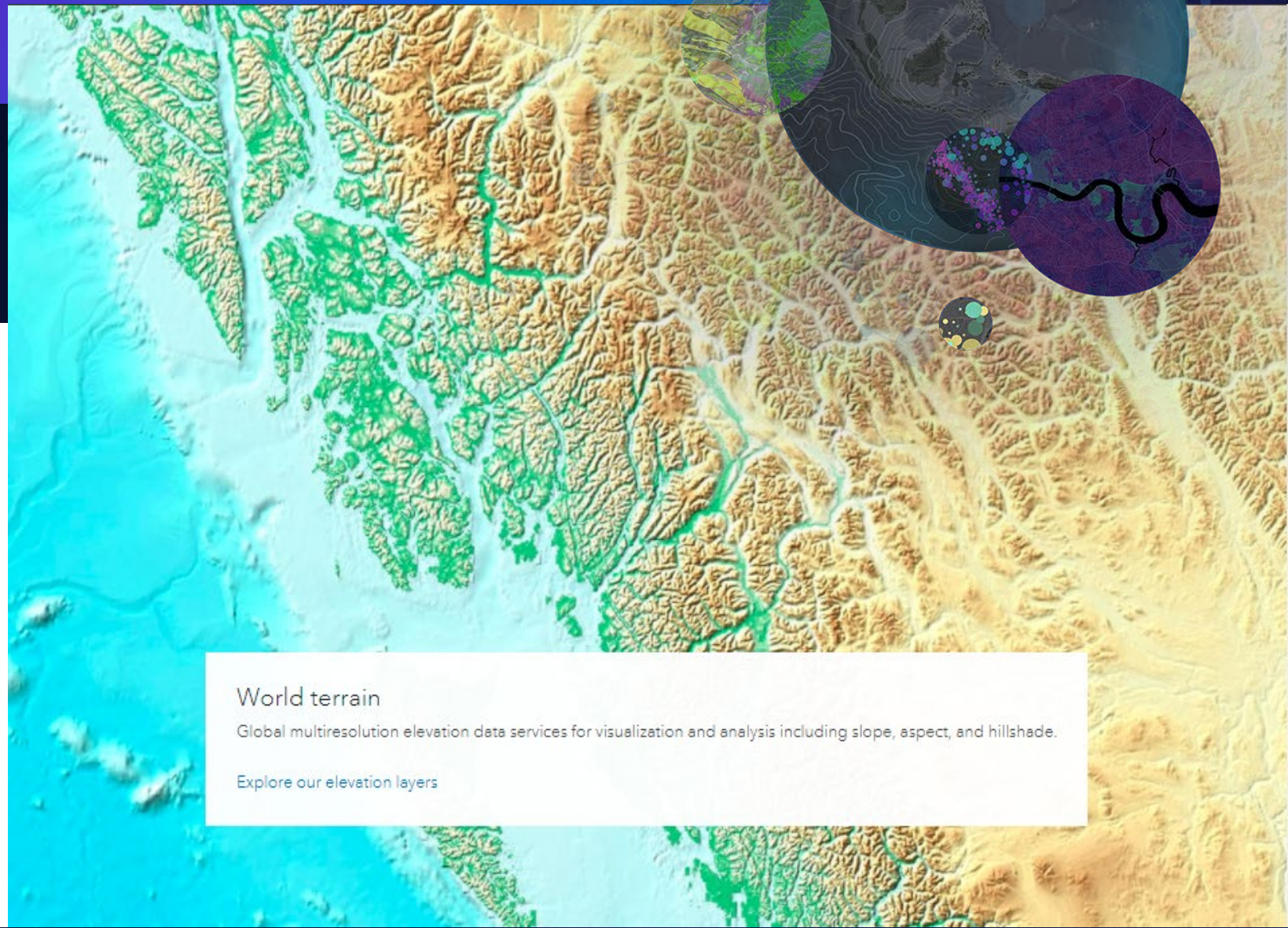
Sentinel-2



Arctic imagery



MODIS imagery



### World terrain

Global multiresolution elevation data services for visualization and analysis including slope, aspect, and hillshade.

[Explore our elevation layers](#)

# Imagery Content

Access our vast imagery collection or your own

## ArcGIS Living Atlas of the World

Discover content that supports your work. ArcGIS Living Atlas of the World is the foremost collection of geographic information from around the globe. It includes maps, apps, and ready-to-use data layers and deep learning models.



World Imagery



Landsat



NAIP



HYCOM



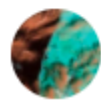
World terrain



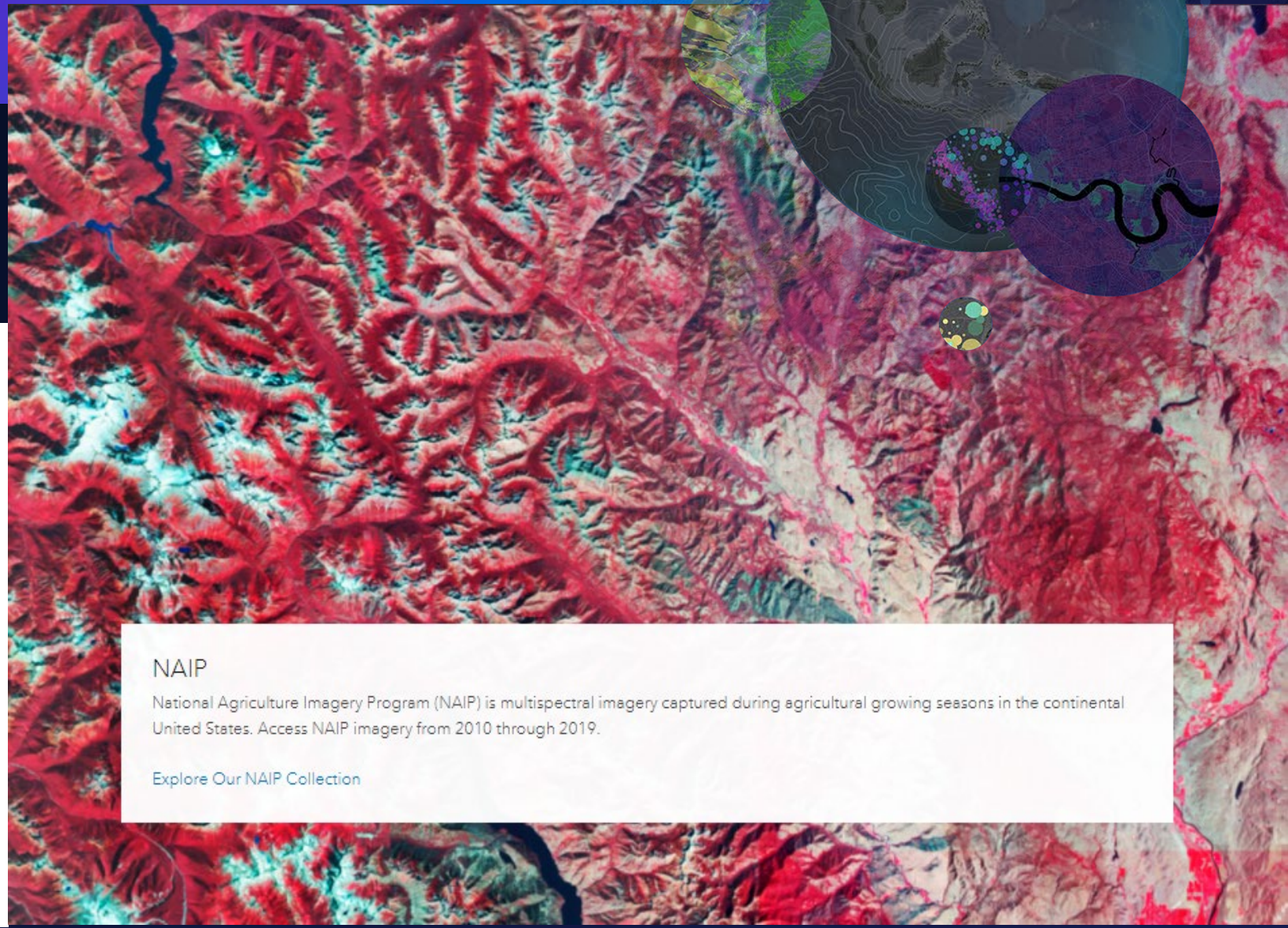
Sentinel-2



Arctic imagery



MODIS imagery



### NAIP

National Agriculture Imagery Program (NAIP) is multispectral imagery captured during agricultural growing seasons in the continental United States. Access NAIP imagery from 2010 through 2019.

[Explore Our NAIP Collection](#)



# Imagery Content

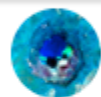
Access our vast imagery collection or your own

## ArcGIS Living Atlas of the World

Discover content that supports your work. ArcGIS Living Atlas of the World is the foremost collection of geographic information from around the globe. It includes maps, apps, and ready-to-use data layers and deep learning models.



World Imagery



Landsat



NAIP



HYCOM



World terrain



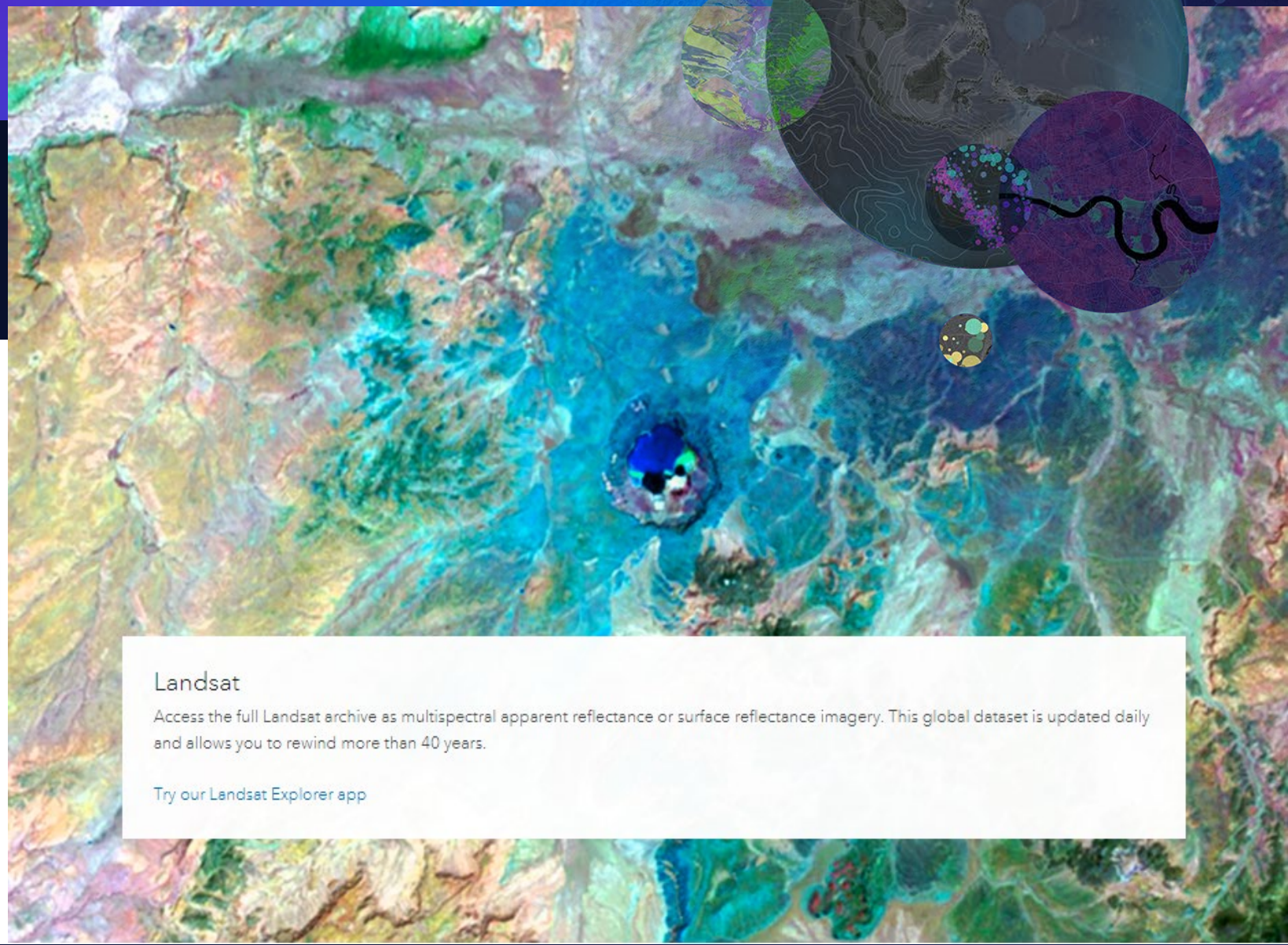
Sentinel-2



Arctic imagery



MODIS imagery



### Landsat

Access the full Landsat archive as multispectral apparent reflectance or surface reflectance imagery. This global dataset is updated daily and allows you to rewind more than 40 years.

[Try our Landsat Explorer app](#)

# Imagery Content

Access our vast imagery collection or your own

## ArcGIS Living Atlas of the World

Discover content that supports your work. ArcGIS Living Atlas of the World is the foremost collection of geographic information from around the globe. It includes maps, apps, and ready-to-use data layers and deep learning models.



World Imagery



Landsat



NAIP



HYCOM



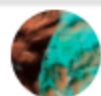
World terrain



Sentinel-2



Arctic imagery

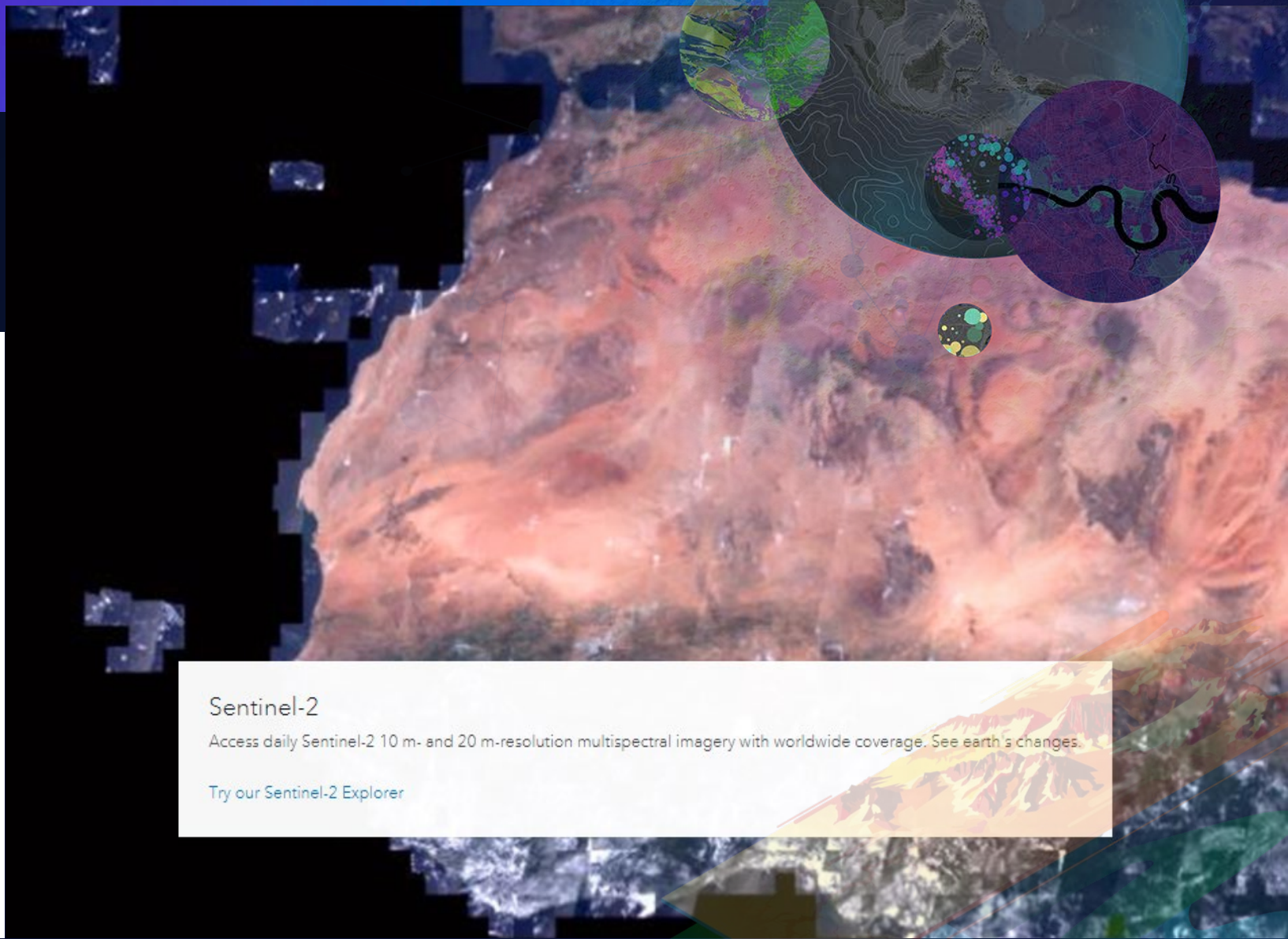


MODIS imagery

### Sentinel-2

Access daily Sentinel-2 10 m- and 20 m-resolution multispectral imagery with worldwide coverage. See earth's changes.

[Try our Sentinel-2 Explorer](#)



# ArcGIS Image product suite

---

Desktop



ArcGIS Image Analyst  
For ArcGIS Pro

Server



ArcGIS Image Server  
for ArcGIS Enterprise

SaaS



ArcGIS Image for  
ArcGIS Online

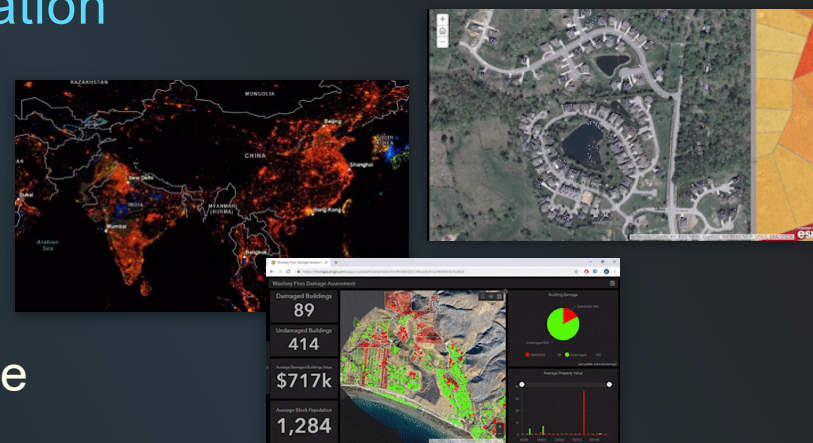
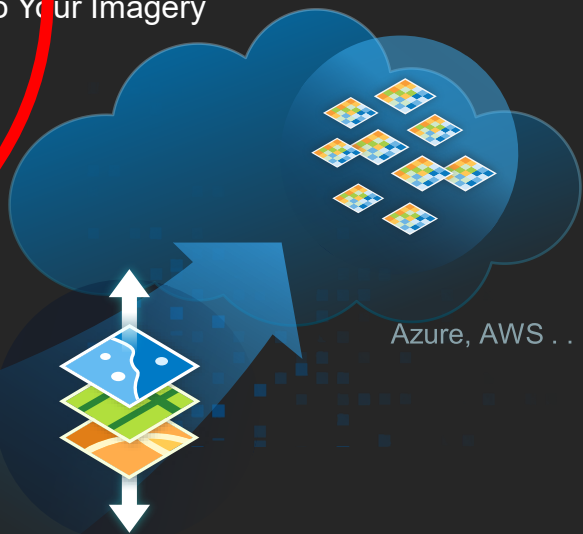


# SaaS based Image Hosting & Raster Analytics in the Cloud

## Data Management, Analysis & Visualization



Put ArcGIS next to Your Imagery

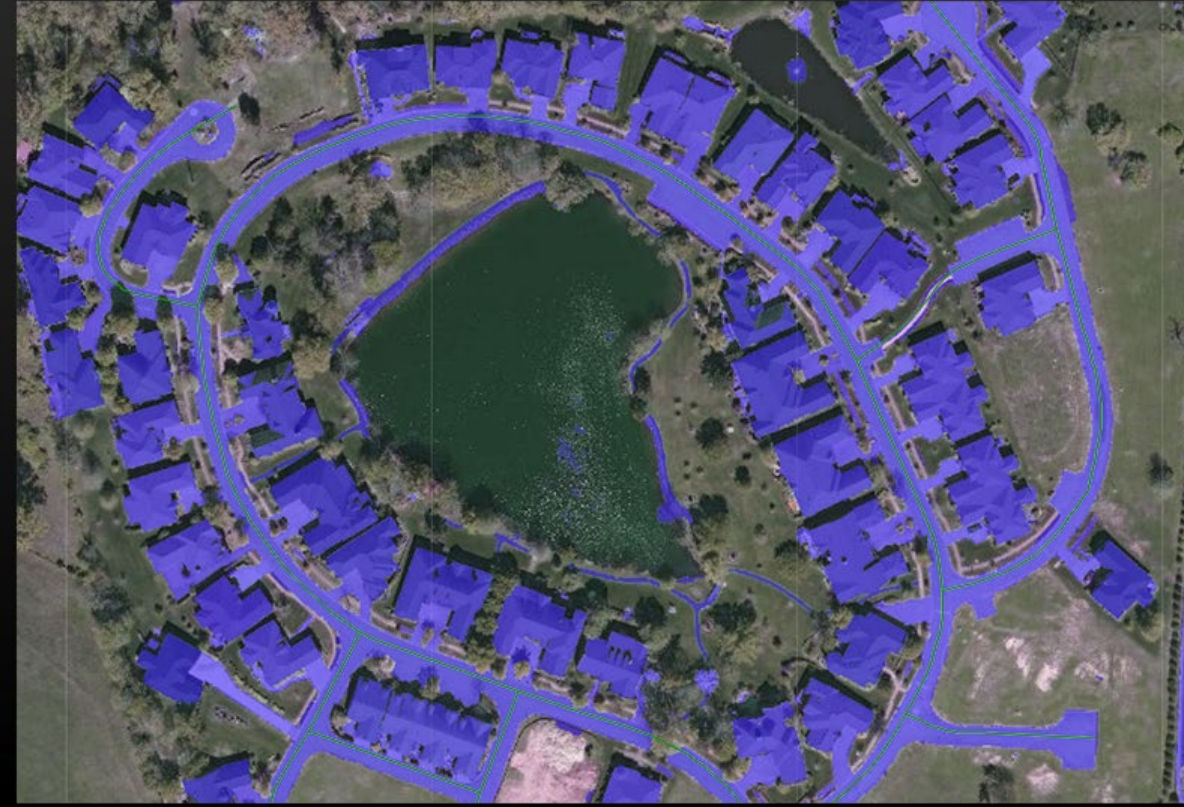


### Capabilities

- Tiled Imagery
- Dynamic Imagery
- Image Processing
- Raster Analytics & Modeling
- AI Workflows & DL Tools
  
- 175+ Functions & Tools

# ArcGIS Image for ArcGIS Online

Imagery hosting, analysis, and streaming  
in the cloud



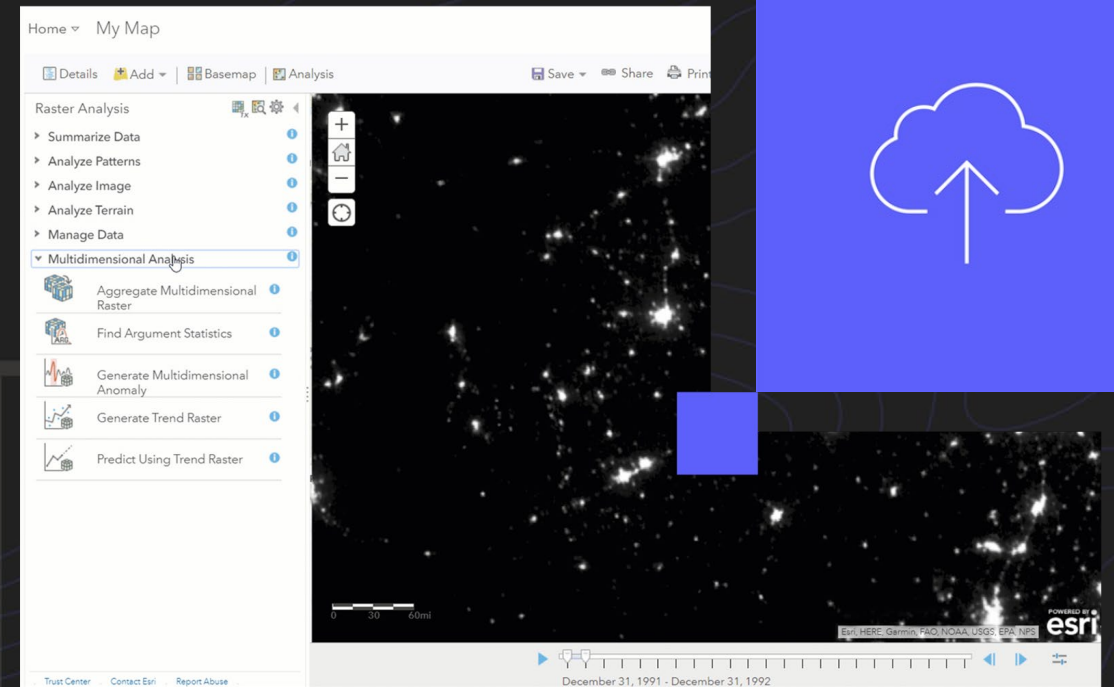
# Make Imagery Accessible Across the Organization

Stream your imagery as tiled and  
dynamic services



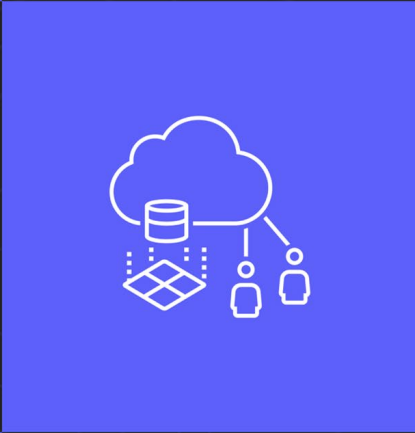
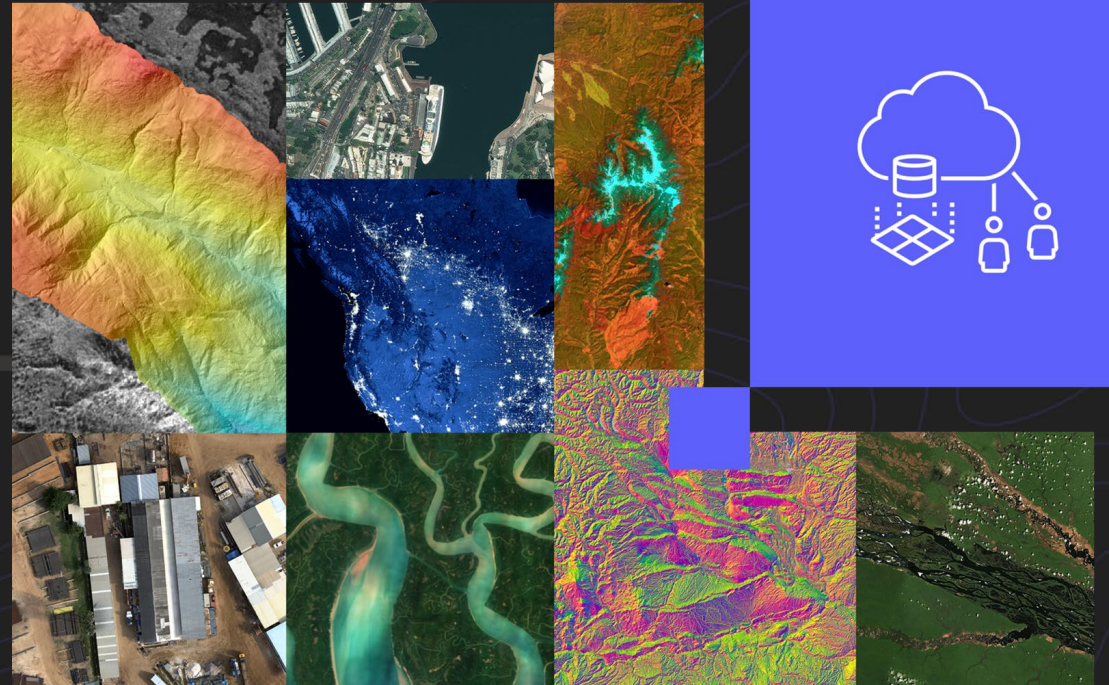
# Eliminate Infrastructure Management

Free yourself to focus on your work by hosting, analyzing, and streaming imagery in a secure, scalable SaaS



# Simplify Image Management

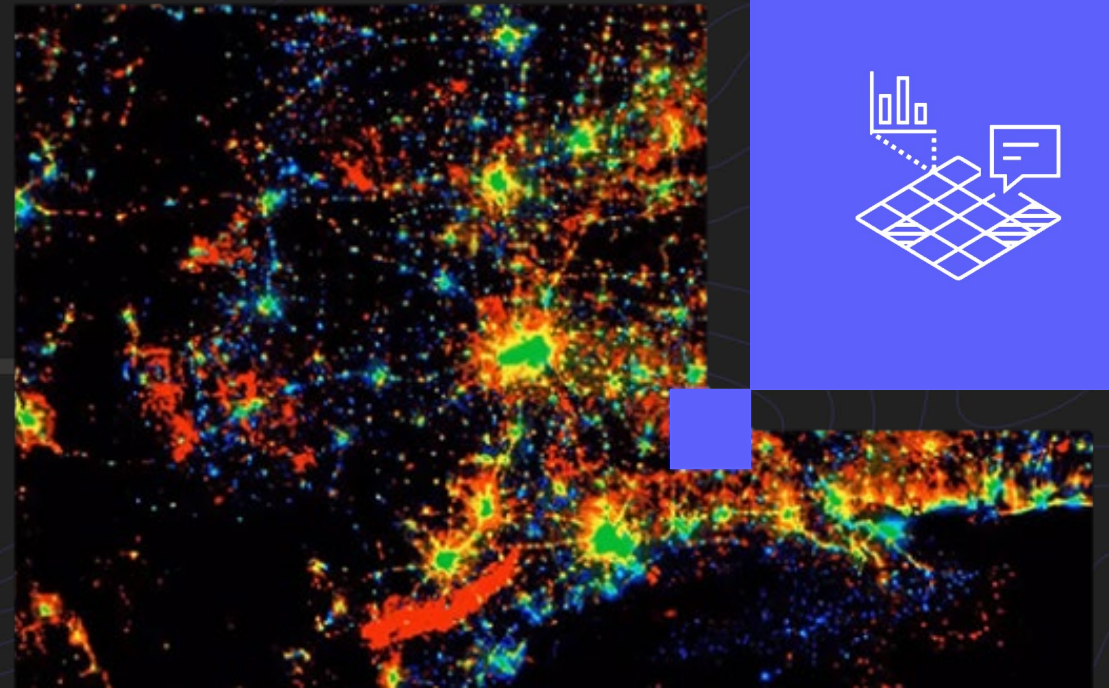
Easily upload and publish imagery over the web





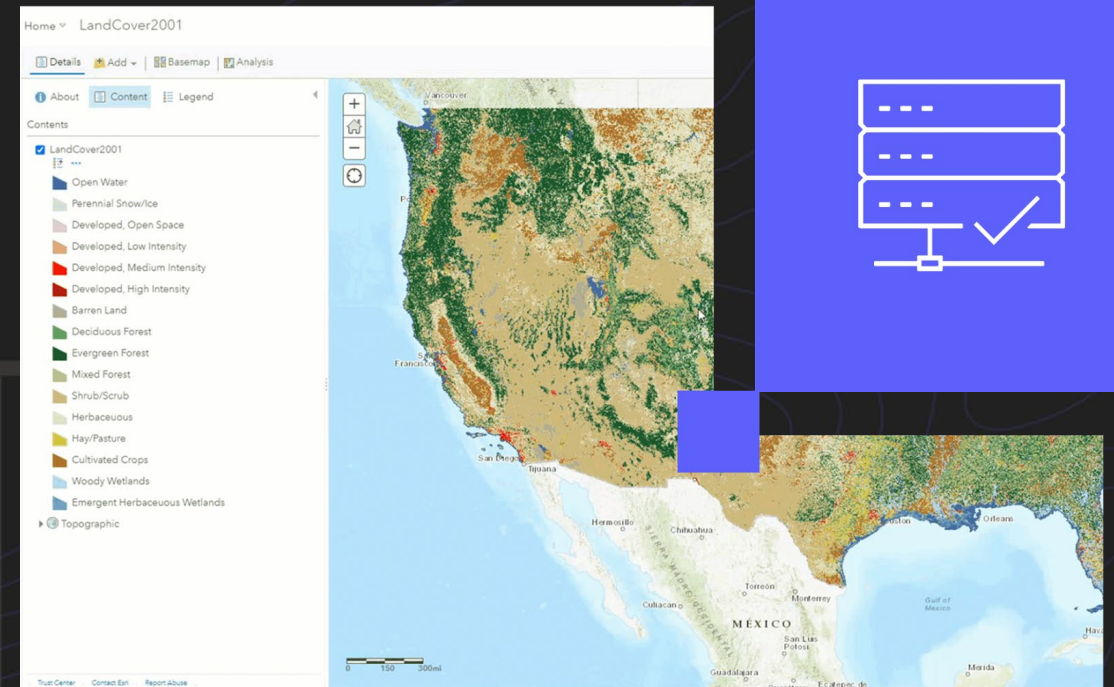
# Process Imagery at Scale

Extract insights from imagery using powerful image analysis workflows that leverage our elastic and resilient cloud environment



# Save Time Without Increasing Costs

Scale effortlessly as volumes of data increase to meet customer demand



# How ArcGIS Image for ArcGIS Online Works



**Step 1**  
Upload and publish  
imagery to ArcGIS  
Online



**Step 2**  
Select the type of  
image service  
(Tiled or dynamic)

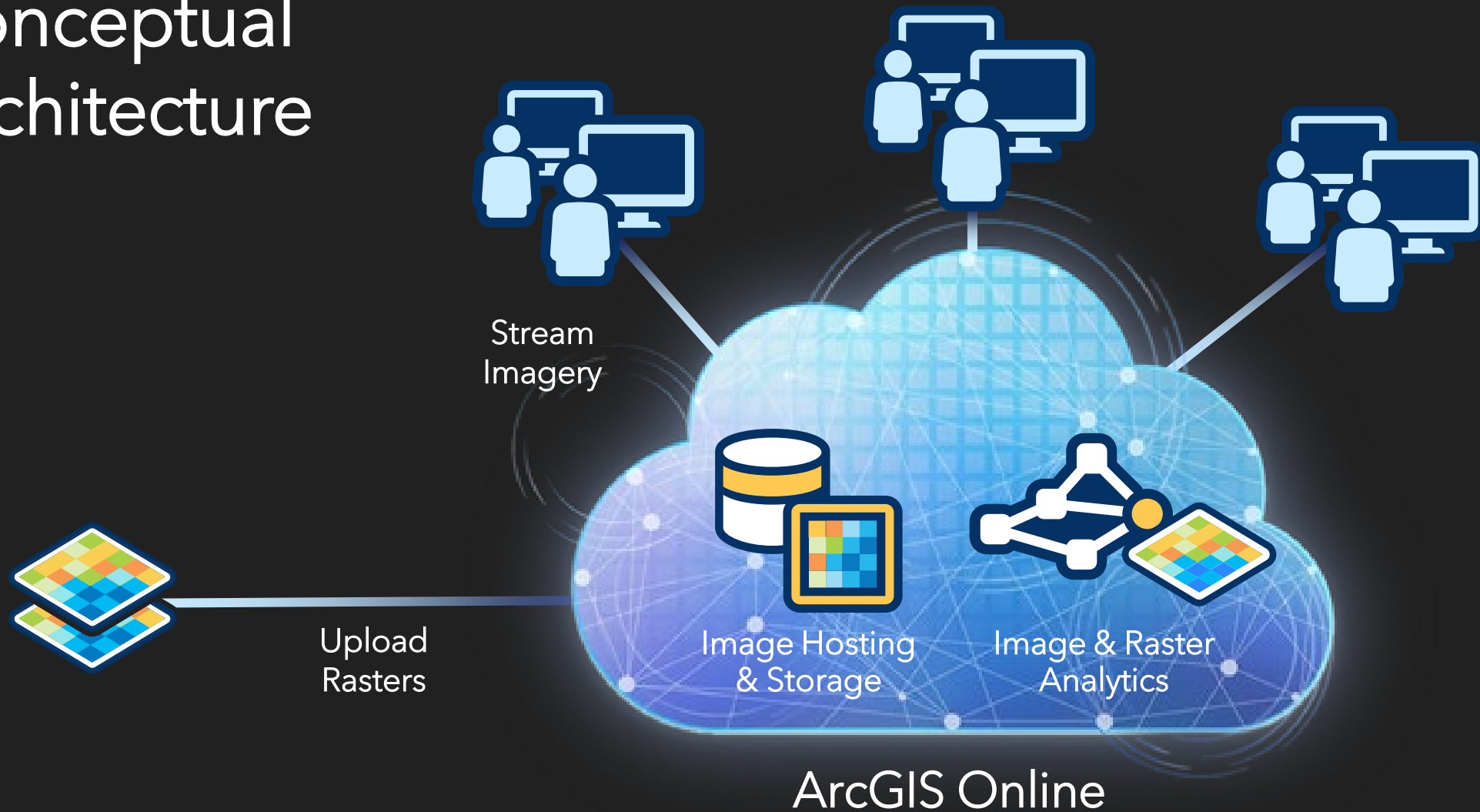


**Step 3**  
Add analytics to  
your imagery  
(optional)



**Step 4**  
Stream imagery to  
end users

# Conceptual Architecture

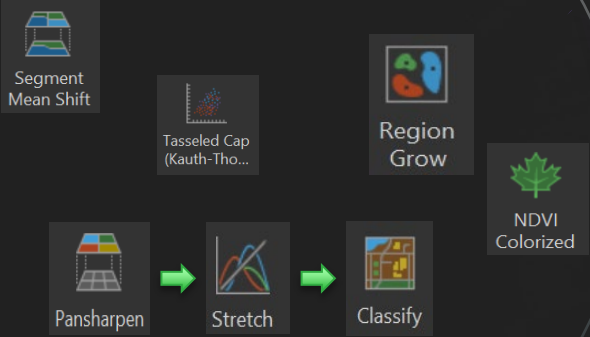


# Finding Spatial Patterns

Extensive imagery analysis and raster analytics included

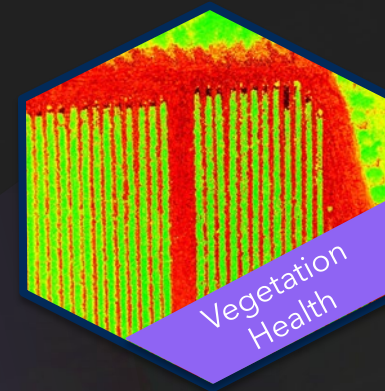
## Finding Spatial Patterns

### Raster Functions



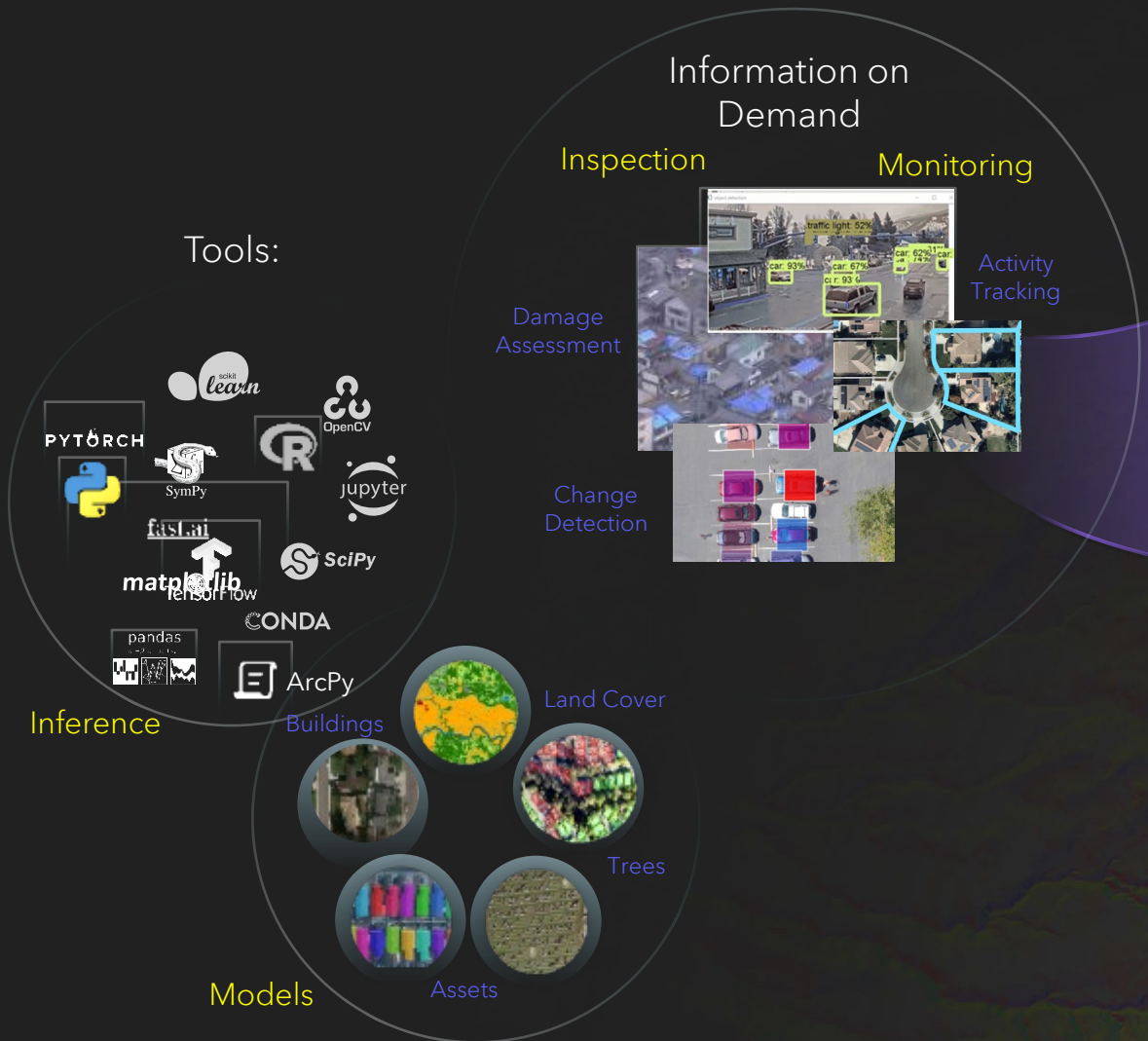
## Raster Function Templates

Screenshot of ArcGIS Online Function Editor showing a workflow for BurnScar\_SPOT. The workflow includes steps: Read File, Process File, Control and Organize, and Send Attributes. A dialog box for 'Result layer name' is open, showing options for 'Tiled imagery layer' and 'Dynamic imagery layer'. A 'RUN ANALYSIS' button is visible.

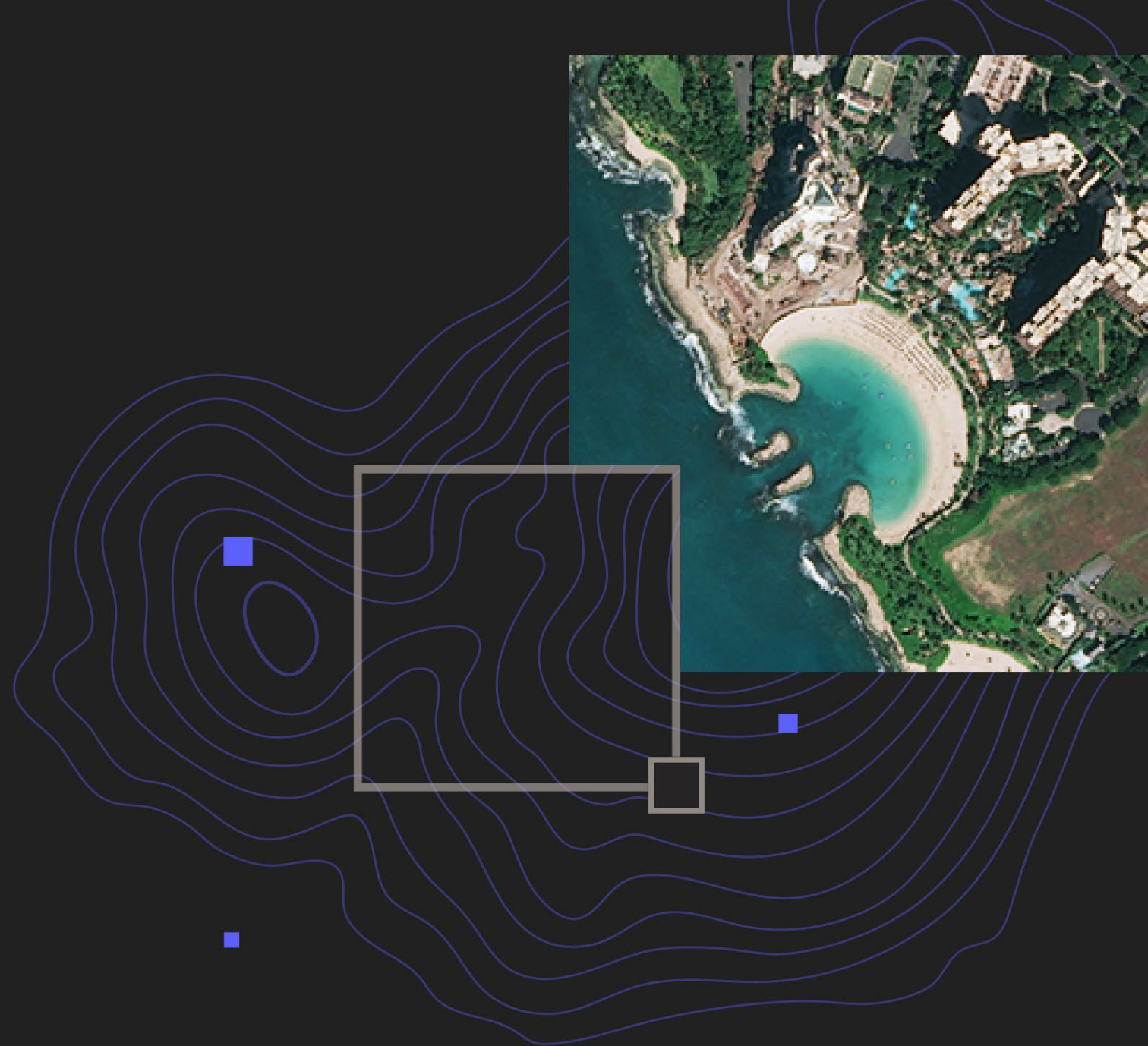


# Observations On Demand Using Deep Learning

Optimized for GeoAI feature extraction at scale



# How to Get Started

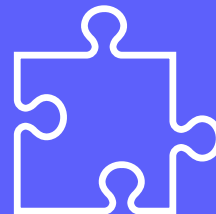


# Pricing

Start with  
**Creator user type**  
\$500/user/year



Add ArcGIS Image  
for ArcGIS Online  
\$700/user/year



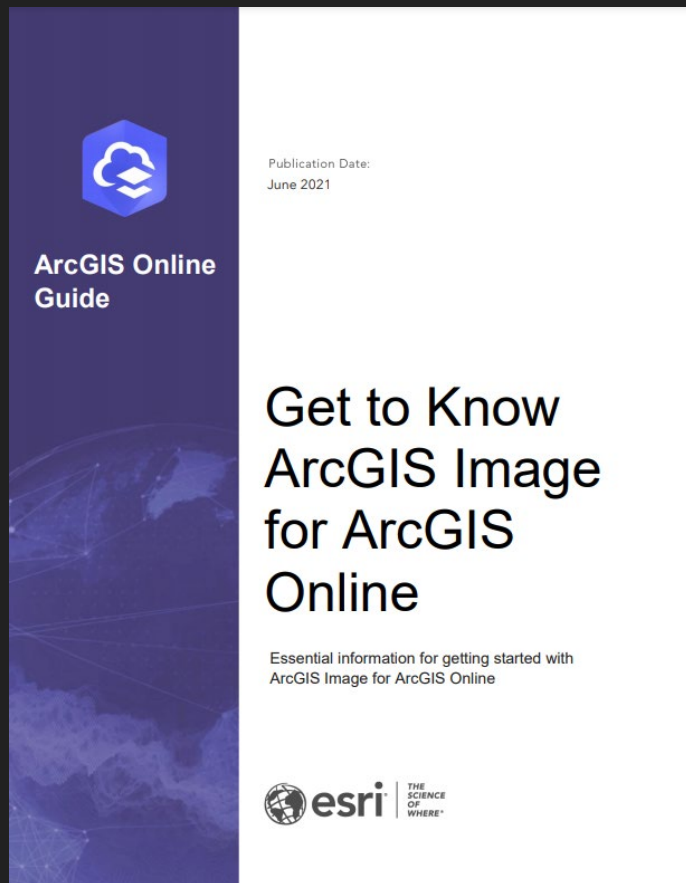
Consume **credits** for  
premium services



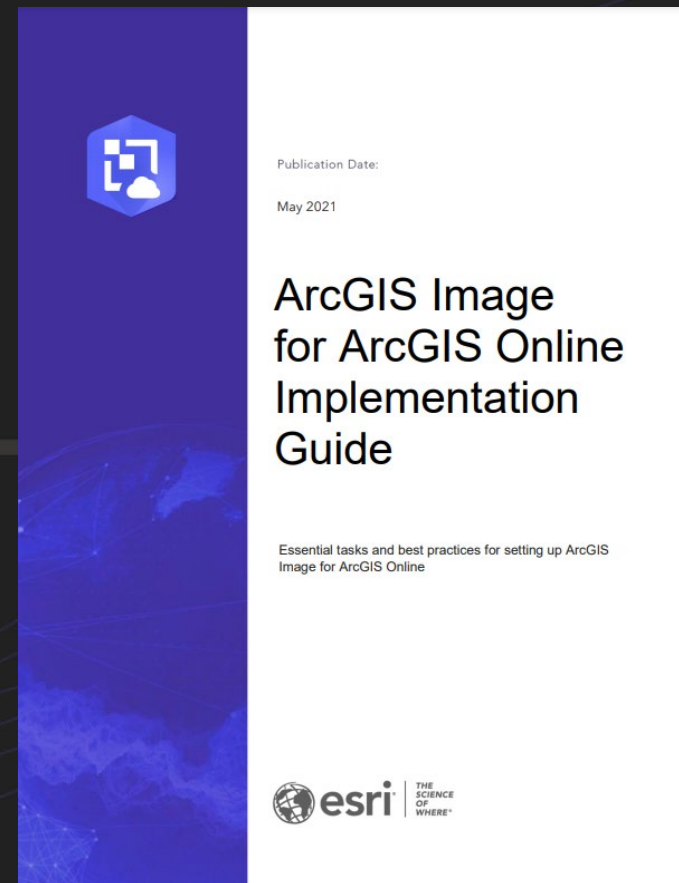
- Imagery storage  
1.2 credits/GB/month
- Dynamic imagery hosting  
Based on # of images stored per day
- Imagery analysis  
Depends on # of pixels processed +  
complexity of analysis



# Resources

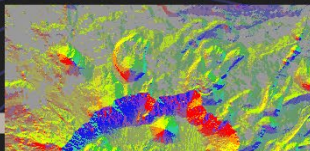
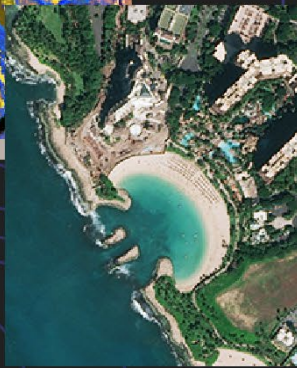
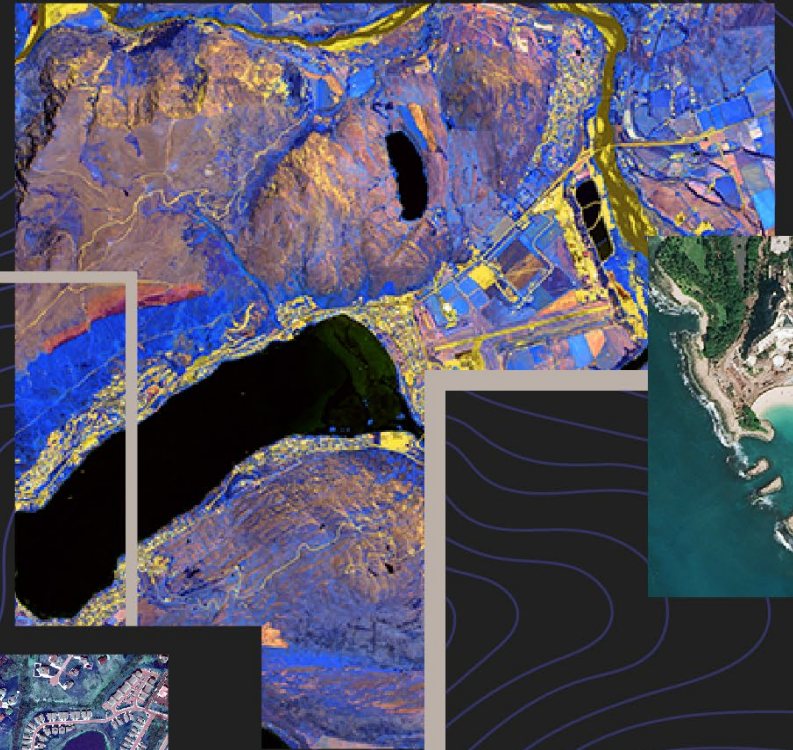
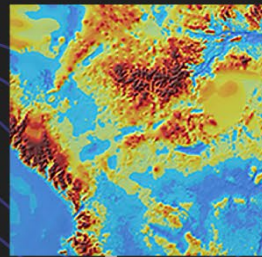


<https://bit.ly/3h66lsx>



<https://bit.ly/364Wr3Y>

# ArcGIS Image for ArcGIS Online





esri®

THE  
SCIENCE  
OF  
WHERE®

