



Visualize your 3D Data Live in the Real World

IMAGIN Webinar Series

ST. LOUIS • KANSAS CITY • INDIANAPOLIS • CHICAGO • OMAHA • MILWAUKEE • DES MOINES • DETROIT • LANSING

www.seilergeo.com

Presenters



Joe Madej, GISP
Mapping Technical Support
St Louis, Mo



Jay Riester
Mapping Technical Support
Franklin, WI



Seiler Instrument's Geospatial team is made up of registered land surveyors, certified GISPs, certified trainers, licensed pilots as well as other experienced industry sales professionals and support staff. We help guide and get you equipped and trained based on our mutual understanding of your projects and workflows. We excel in providing you the on-going support you need before and after the sale leaving you with a clear road map to success.



ST. LOUIS • KANSAS CITY • INDIANAPOLIS • CHICAGO • OMAHA • MILWAUKEE • DES MOINES • DETROIT • LANSING

Where are we located?

- Nebraska
- Kansas
- Missouri*
- Iowa
- Wisconsin
- Illinois
- Indiana
- Michigan



Scenario

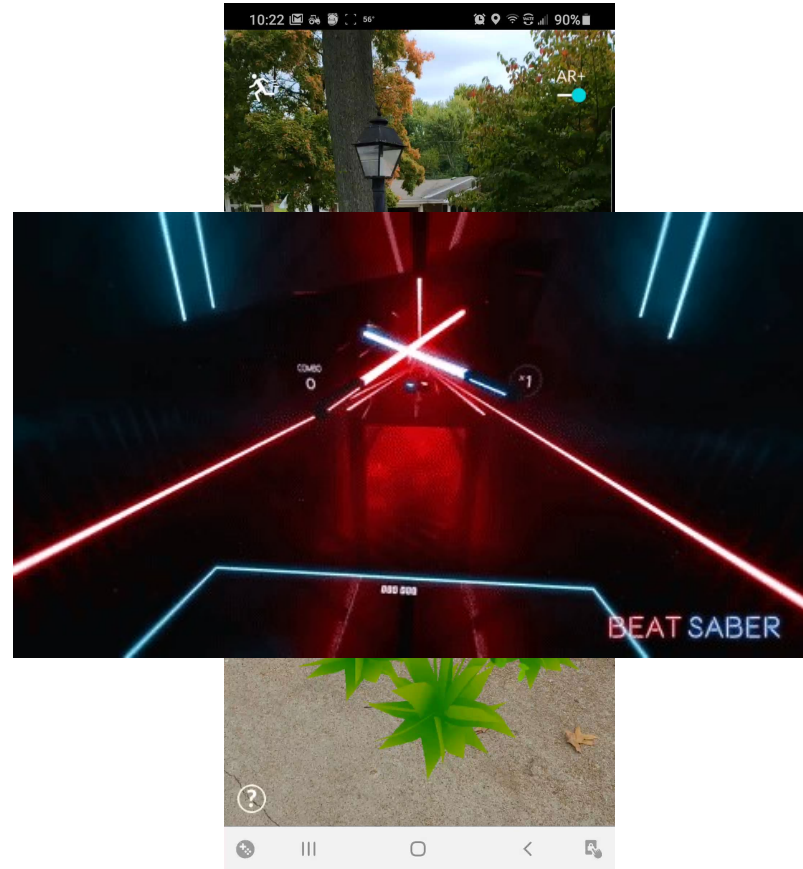
- Peter works for XYZ City Sewer Department
- All manholes have been collected with high accuracy GNSS
- Street department just recently repaved a neighborhood street covering up a few manholes
- Its now time for Peter to do his inspections of the manholes on this street

How does one locate missing manholes?

- Search by eye
- Wheel and tape
- Use GNSS equipment to locate point captured
 - Could require data connection in the field
- Utilize Augmented Reality or Mixed Reality Device

A Picture is worth a thousand words

- Technology is moving rapidly
- Virtual Reality
- Mixed Reality
- Augmented Reality



Trimble SiteVision

- SiteVision is a high-accuracy AR/MR system that runs on your AR-supported Android mobile device using the Trimble SiteVision Integrated Positioning System and subscription-based services.

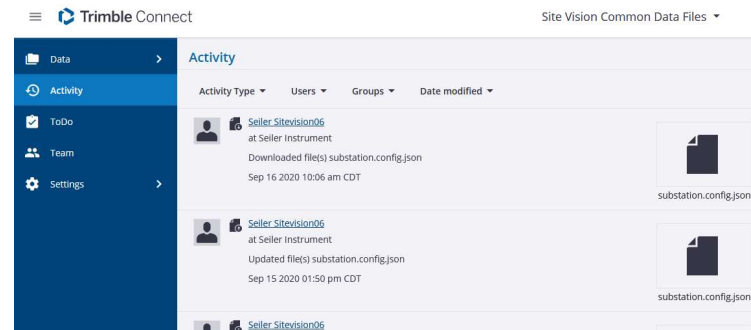


What can you do with SiteVision?

- Visualize in 3D



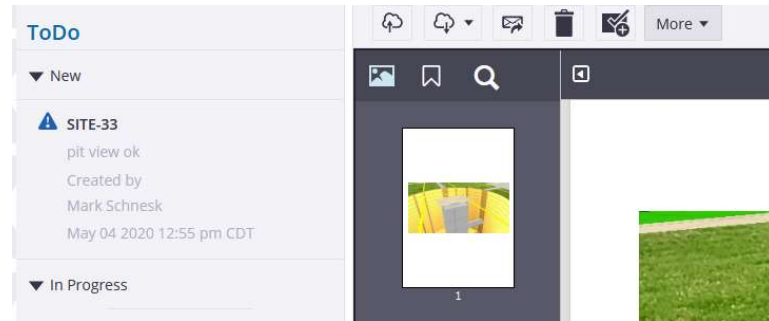
- Collaborate with Others



- Measure Data

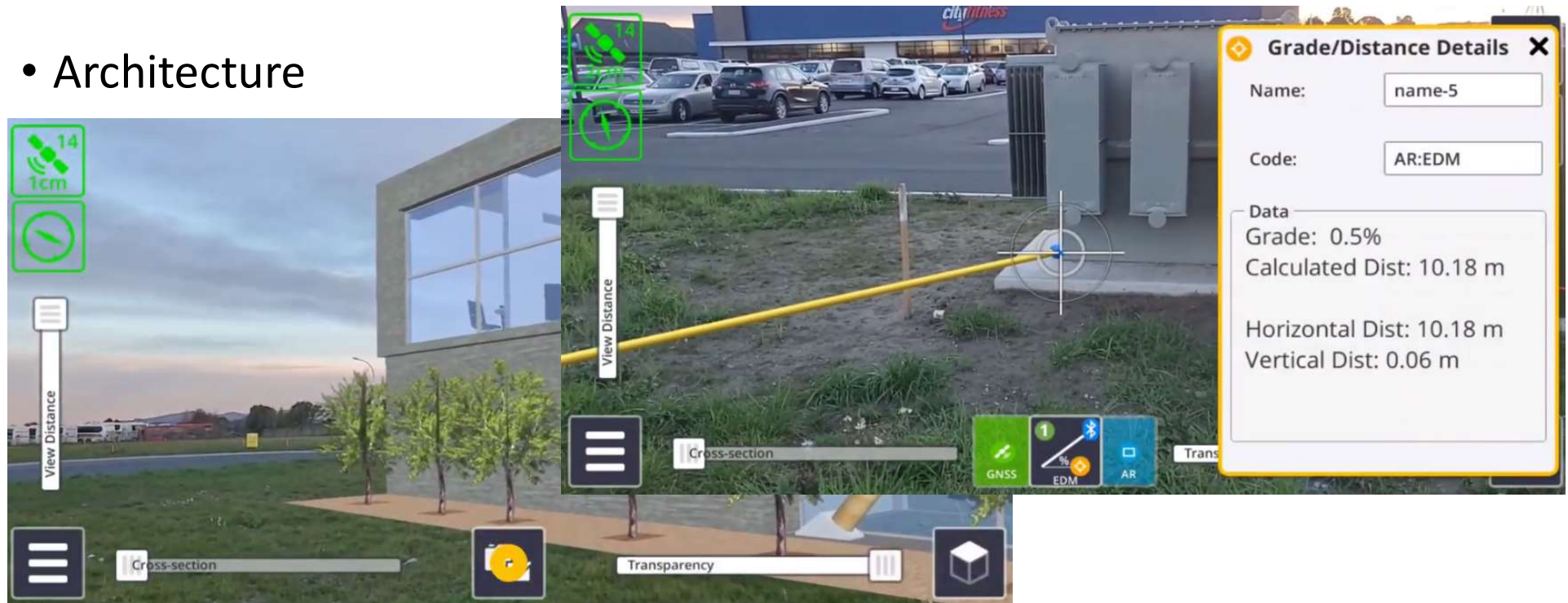


- Report



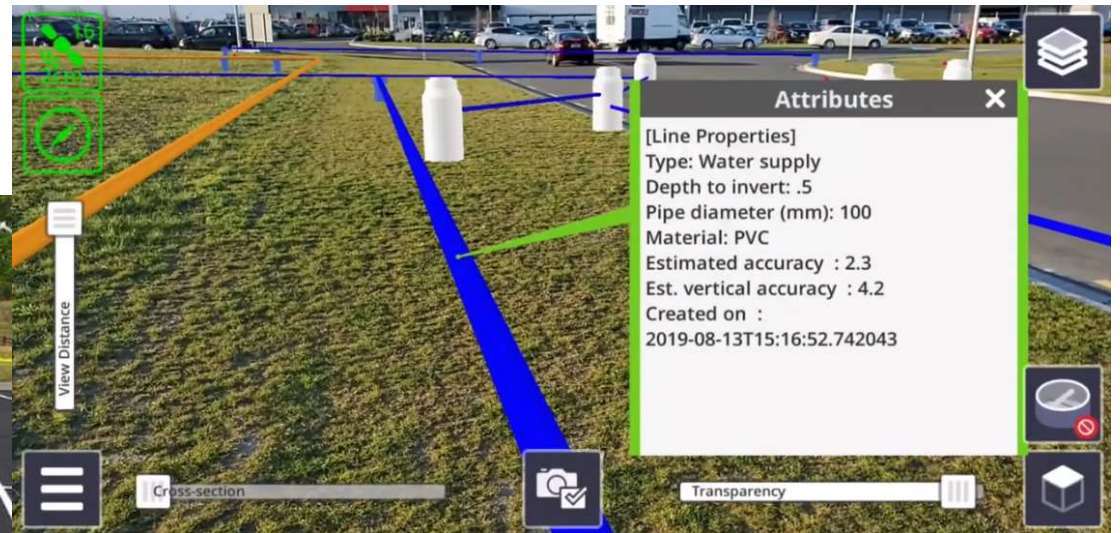
Applications and Industries

- Architecture



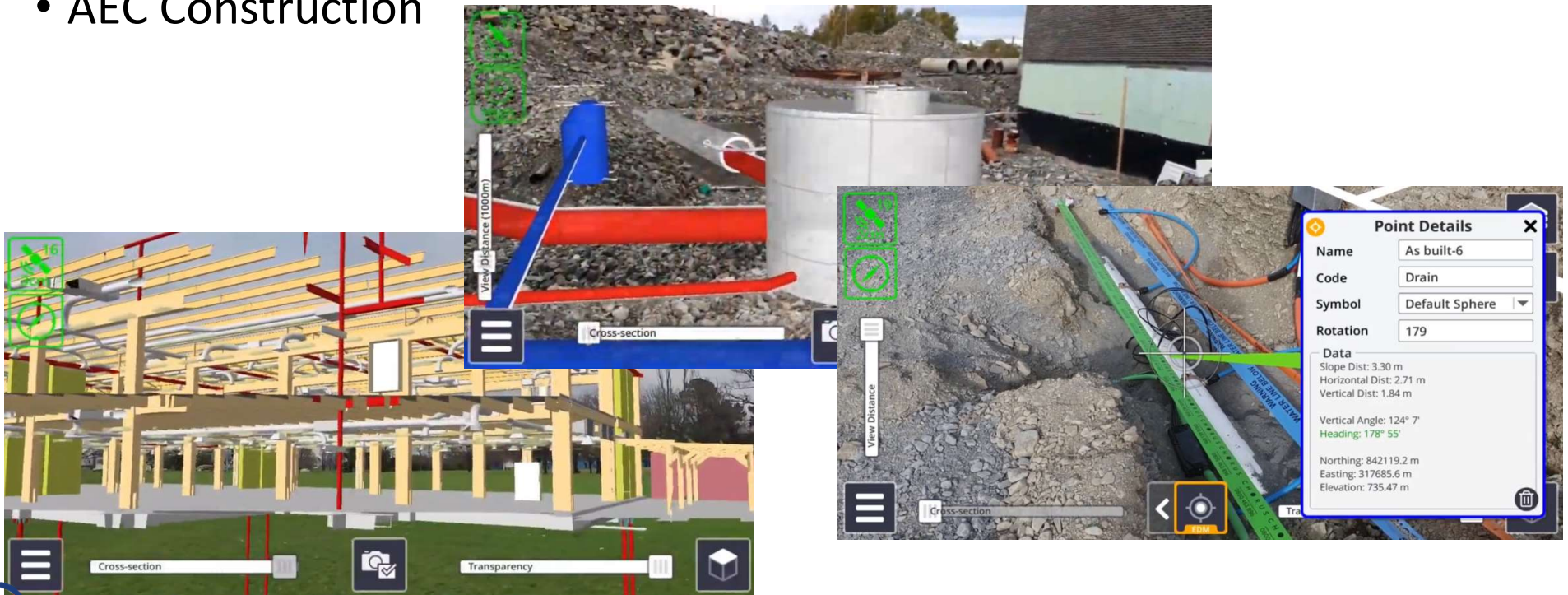
Applications and Industries

- Survey and Mapping



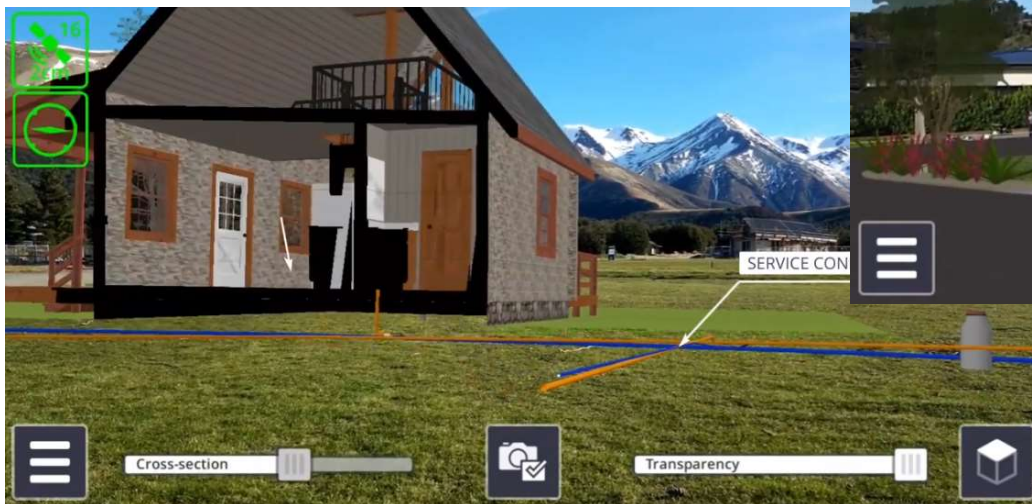
Applications and Industries

- AEC Construction



Applications and Industries

- Residential Construction
- Landscaping

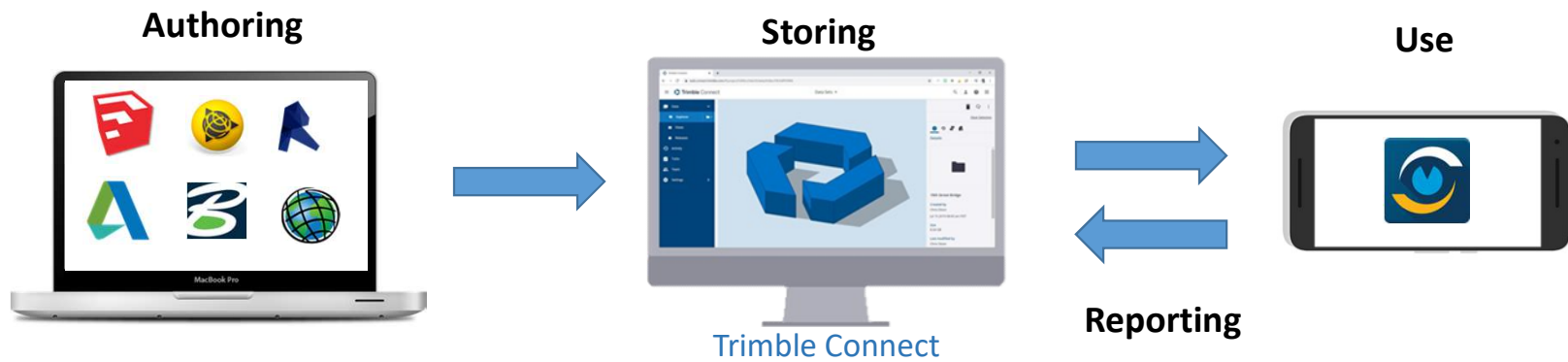


Applications and Industries

- Planning



Data from many sources



Trimble formats

SketchUp (SKP)
Business Center
(VCE)
Business Center
(TTM)

Open Industry

formats
LandXML
IFC
AutoCAD (DWG)
ESRI (SHP)
Images (PNG)

Easy to use



ST. LOUIS • KANSAS CITY • INDIANAPOLIS • CHICAGO • OMAHA • MILWAUKEE • DES MOINES • DETROIT • LANSING

How does Peter visualize data in the field with Trimble Sitevision?



ST. LOUIS • KANSAS CITY • INDIANAPOLIS • CHICAGO • OMAHA • MILWAUKEE • DES MOINES • DETROIT • LANSING

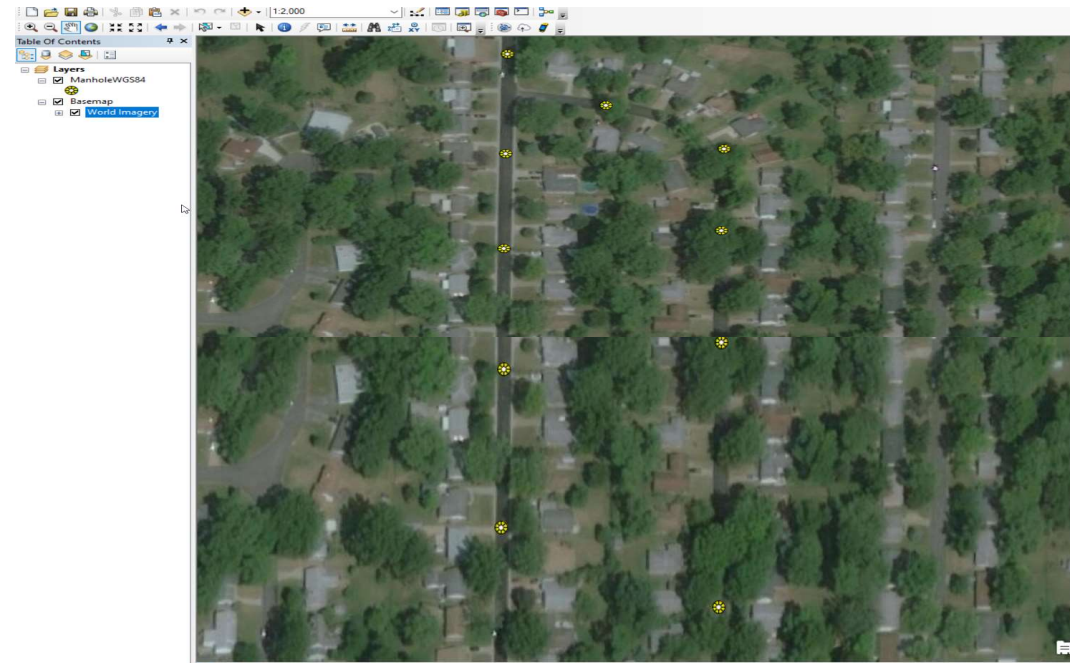
How was the Data Collected?

- Trimble Centimeter R2
- Samsung Galaxy S10+
- ESRI Collector with Trimble Mobile Manager
- 2M pole



Data continued

- Downloaded from ArcGIS Online as File Geodatabase
- ArcMap 10.7.1
- Trimble Positions
 - Used to load data into Trimble Connect



Data Workflows - ArcMap

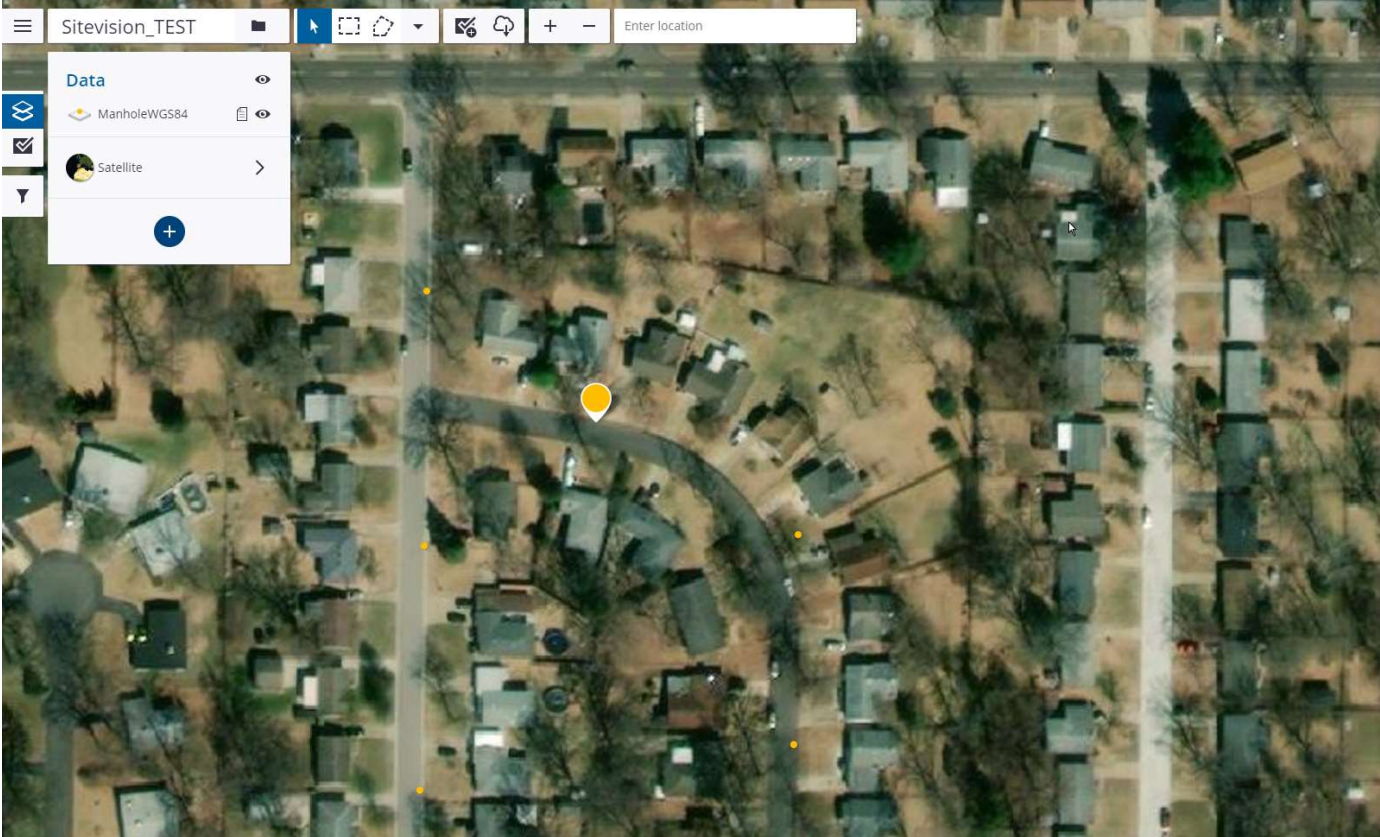
ArcMap to SiteVision



SiteVision to ArcMap



Trimble Connect

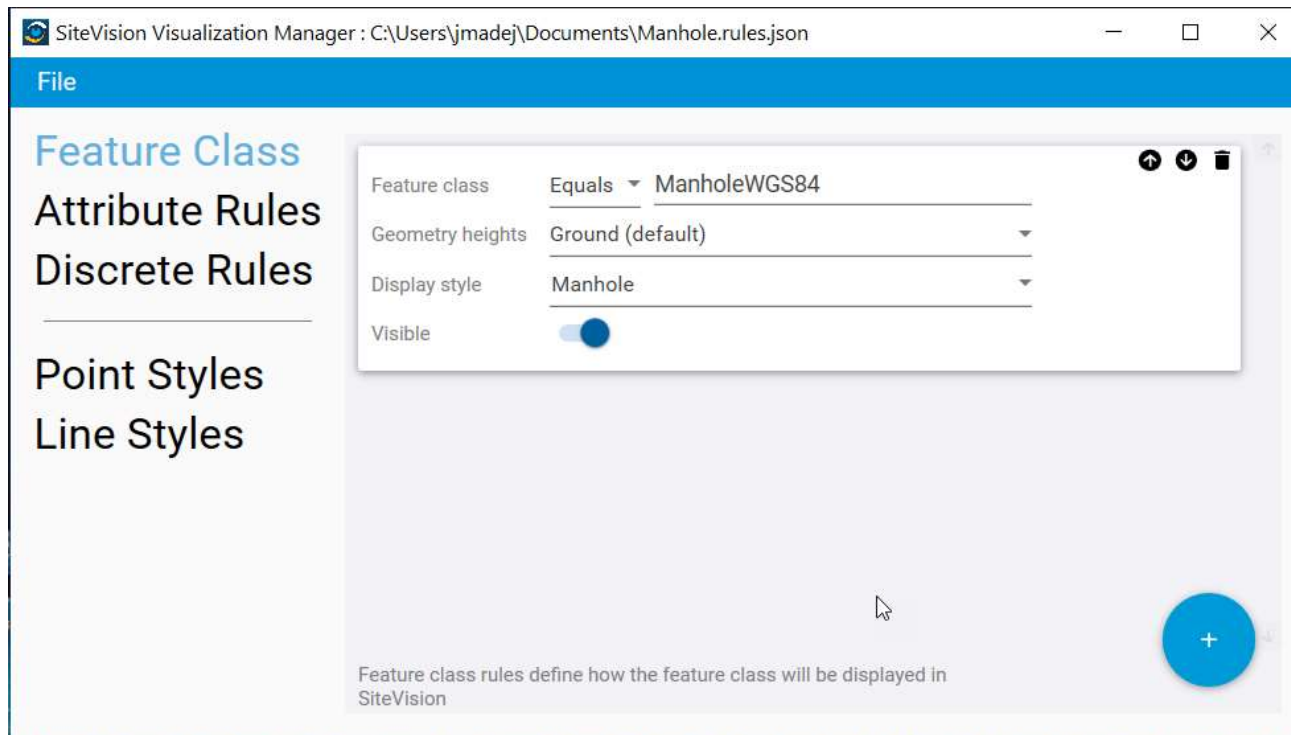


ST. LOUIS • KANSAS CITY • INDIANAPOLIS • CHICAGO • OMAHA • MILWAUKEE • DES MOINES • DETROIT • LANSING

In the field...



Sitevision Visualization Manager



Data Modeled





www.seilergeo.com

<https://www.seilergeo.com/blogs/mapping-gis/>

mapsupport@seilergeo.com

Toll Free: 844-400-1402

Twitter: @SiMapsupport

Follow us on Facebook! @SeilerGeospatial



ST. LOUIS • KANSAS CITY • INDIANAPOLIS • CHICAGO • OMAHA • MILWAUKEE • DES MOINES • DETROIT • LANSING